



MLS 6763687 Residential

\$300,000

3,000 sq ft
6 bedrooms
3 baths

23919 610th Avenue
Hewitt MN 56453

Status: Active

Description:

Discover this expansive 40-acre property located just outside Hewitt in Otter Tail County, offering a unique blend of rural charm and recreational potential. This versatile parcel features a double-wide mobile home, a farmhouse in the midst of a renovation project, and a non-insulated pole barn, providing ample opportunities for customization. The property is equipped with a septic system and two wells, ensuring essential utilities are in place.

Ideal for outdoor enthusiasts, this land boasts excellent deer hunting potential, making it a perfect hunting camp. The terrain includes a mix of high and low ground, with multiple ideal locations for food plots. Several deer stands are already in place, enhancing the hunting experience. Gravel roads border two sides of the property, offering convenient access. This property is a rare opportunity for those seeking a serene retreat with abundant recreational possibilities in the heart of Otter Tail County.

Additional Details:

Year Built	1900
Lot Acres	40
Lot Dimensions	4
Garage Stalls	1
School District	2155
Taxes	\$1,528
Taxes with Assessments	\$1,528
Tax Year	2025

Additional Features:

Basement: None **Fuel:** Propane **Garage:** 1 **Heat:** Forced Air **Sewer:** Mound Septic, Tank with Drainage Field **Water:** Drilled **Air Conditioning:** Central Air

Driving Directions:

From Hewitt, head west on Minnesota 210. Turn left on 610th Ave, the property is one mile on the right.



Listed By:
American Legacy Land Co., LLC

Affinity Real Estate Inc. participates in the Regional Multiple Listing Service of Minnesota, Inc Broker Reciprocity (sm) program, allowing us to display other broker's listings on our website. All properties are subject to prior sale, change or withdrawal.



Call Affinity Real Estate

218-237-3333

info@affinityrealestate.com



Affinity Real Estate - 600 Park Avenue South - Park Rapids MN 56470



website: www.AffinityRealEstate.com | email: info@affinityrealestate.com | office: 218-237-3333 | fax: 218-237-3377



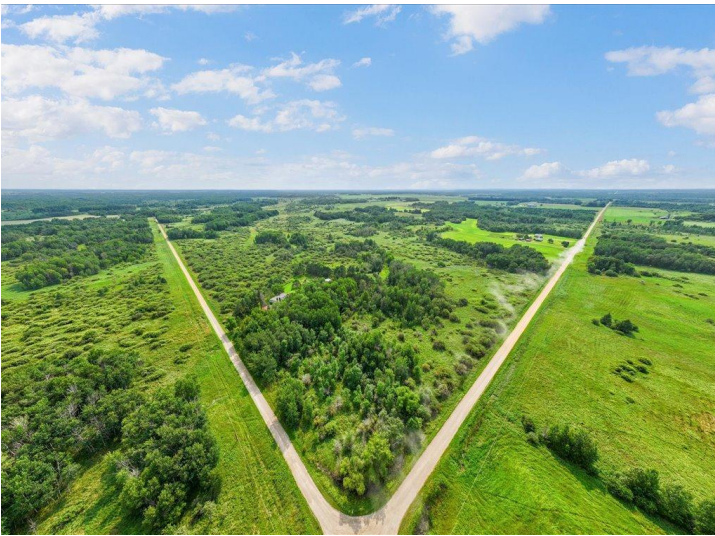
\$300,000
 MLS 6763687 Residential
 23919 610th Avenue
 Hewitt MN 56453



website: www.AffinityRealEstate.com | email: info@affinityrealestate.com | office: 218-237-3333 | fax: 218-237-3377



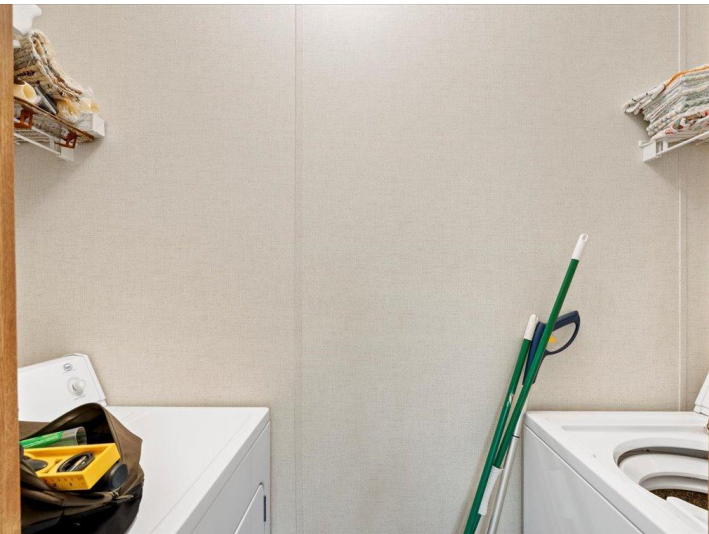
\$300,000
 MLS 6763687 Residential
 23919 610th Avenue
 Hewitt MN 56453



website: www.AffinityRealEstate.com | email: info@affinityrealestate.com | office: 218-237-3333 | fax: 218-237-3377

Affinity
REAL ESTATE INC

\$300,000
MLS 6763687 Residential
23919 610th Avenue
Hewitt MN 56453



website: www.AffinityRealEstate.com | email: info@affinityrealestate.com | office: 218-237-3333 | fax: 218-237-3377

Affinity
REAL ESTATE INC

\$300,000
MLS 6763687 Residential
23919 610th Avenue
Hewitt MN 56453



website: www.AffinityRealEstate.com | email: info@affinityrealestate.com | office: 218-237-3333 | fax: 218-237-3377

Affinity
REAL ESTATE INC

\$300,000
MLS 6763687 Residential
23919 610th Avenue
Hewitt MN 56453



website: www.AffinityRealEstate.com | email: info@affinityrealestate.com | office: 218-237-3333 | fax: 218-237-3377

Affinity
REAL ESTATE INC

\$300,000
MLS 6763687 Residential
23919 610th Avenue
Hewitt MN 56453



website: www.AffinityRealEstate.com | email: info@affinityrealestate.com | office: 218-237-3333 | fax: 218-237-3377



\$300,000
 MLS 6763687 Residential
 23919 610th Avenue
 Hewitt MN 56453



website: www.AffinityRealEstate.com | email: info@affinityrealestate.com | office: 218-237-3333 | fax: 218-237-3377

Affinity
REAL ESTATE INC

\$300,000
MLS 6763687 Residential
23919 610th Avenue
Hewitt MN 56453



website: www.AffinityRealEstate.com | email: info@affinityrealestate.com | office: 218-237-3333 | fax: 218-237-3377



\$300,000
MLS 6763687 Residential
23919 610th Avenue
Hewitt MN 56453