



MLS 6763918 Land

\$55,900

2.15 Acres
Other

Tract A County Road 1
Emily MN 56447

Status: Active

Description:

Unique 2+ acre golf course property. Design your new home to enjoy the golf course view in 3 directions. Appreciate the freedom of this rare stand-alone property, not involved with any HOA or Emily Greens GC.

Additional Details:

Lot Acres	2.15
Lot Dimensions	255x389x171x442
School District	182
Taxes	\$218
Taxes with Assessments	\$218
Tax Year	2025

Additional Features:

Driving Directions:

From Emily: Go West on County 1 to property on Left.



Listed By:
Lake Country Properties

Affinity Real Estate Inc. participates in the Regional Multiple Listing Service of Minnesota, Inc Broker Reciprocity (sm) program, allowing us to display other broker's listings on our website. All properties are subject to prior sale, change or withdrawal.



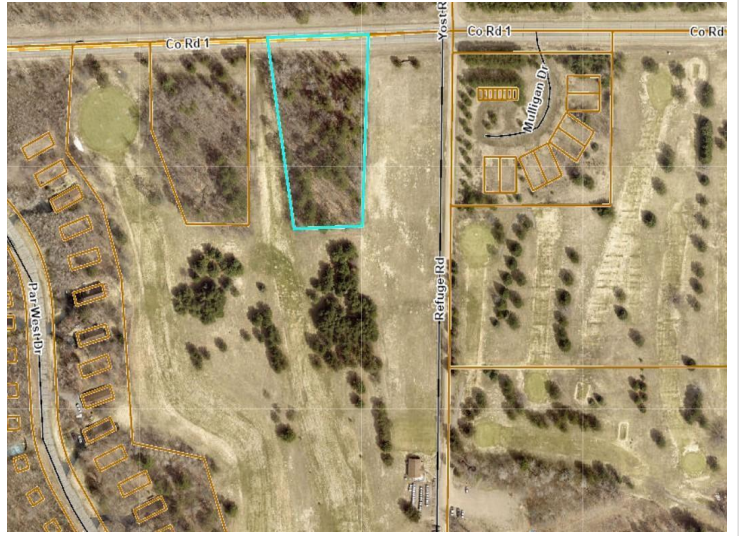
Call Affinity Real Estate

218-237-3333

info@affinityrealestate.com



Affinity Real Estate - 600 Park Avenue South - Park Rapids MN 56470



website: www.AffinityRealEstate.com | email: info@affinityrealestate.com | office: 218-237-3333 | fax:218-237-3377



\$55,900
MLS 6763918 Land
Tract A County Road 1
Emily MN 56447