



MLS 6764021 Land

\$109,000

2.7 Acres
Subdivided

Lots 15-21 Firewood Trail
Park Rapids MN 56470

Status: Pending

Description:

Seven beautifully wooded lots just a couple miles North of downtown Park Rapids! Near Headwaters Gold course, fish hook lake, and Heartland Trail System. A convenient and private location with tons of potential!

Additional Details:

Lot Acres	2.7
Lot Dimensions	1480x400
School District	309
Taxes	\$822
Taxes with Assessments	\$882
Tax Year	2025

Additional Features:

Driving Directions:

From Park Rapids: Take 34 East to County Road 1/Central Ave North, head North on Co Rd 1 for 2.6 miles to a right on 204th Street, then a left on Firewood Trail. Follow road back to the sign.



Listed By:
Coldwell Banker Crown Realtors

Affinity Real Estate Inc. participates in the Regional Multiple Listing Service of Minnesota, Inc Broker Reciprocity (sm) program, allowing us to display other broker's listings on our website. All properties are subject to prior sale, change or withdrawal.



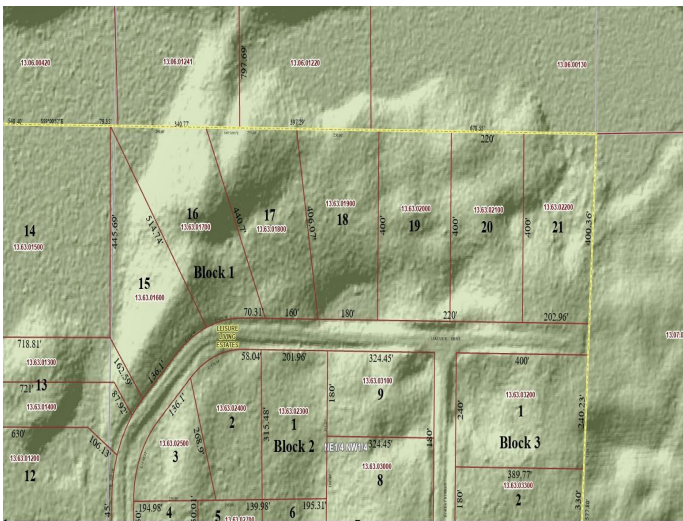
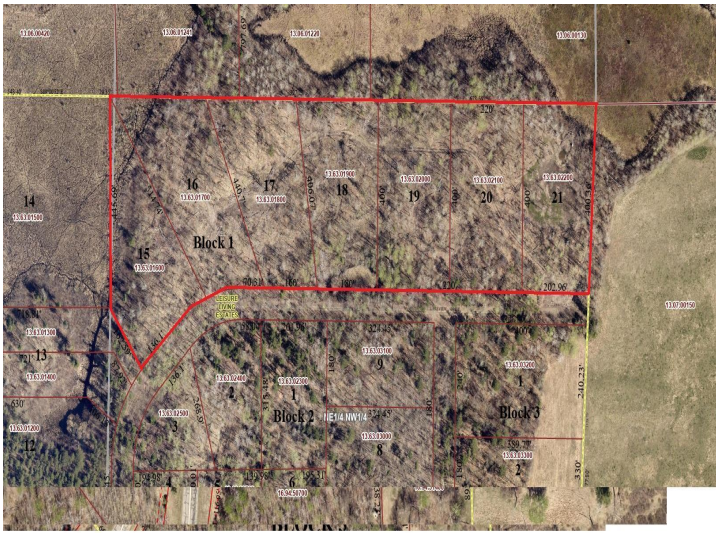
Call Affinity Real Estate

218-237-3333

info@affinityrealestate.com



Affinity Real Estate - 600 Park Avenue South - Park Rapids MN 56470



website: www.AffinityRealEstate.com | email: info@affinityrealestate.com | office: 218-237-3333 | fax: 218-237-3377



\$109,000
 MLS 6764021 Land
 Lots 15-21 Firewood Trail
 Park Rapids MN 56470



website: www.AffinityRealEstate.com | email: info@affinityrealestate.com | office: 218-237-3333 | fax: 218-237-3377



\$109,000
 MLS 6764021 Land
 Lots 15-21 Firewood Trail
 Park Rapids MN 56470



website: www.AffinityRealEstate.com | email: info@affinityrealestate.com | office: 218-237-3333 | fax:218-237-3377



\$109,000
MLS 6764021 Land
Lots 15-21 Firewood Trail
Park Rapids MN 56470