



MLS 6764023 Lake Land

\$100,000

Description:

The lakefront lot is ready for summer fun with a camper, dock, a cozy patio, and a fire pit where you can gather for s'mores and stories under the stars. It also features a sand point well (requiring a pump) and electrical service, making it easy to start enjoying lake life immediately. Imagine waking up to the sound of loons on the water, sipping coffee as the sun rises, enjoying the crackling fire as the sun sets over the lake, and spending long summer days boating, fishing, and making memories. Whether you're looking for a seasonal escape or a future home site, this lot provide the perfect setting for lake living. Don't miss out on this rare chance to own a prime lake property with so much potential! 4 back lots are also available. Call today!

Additional Details:

Lot Acres	0.3
Lot Dimensions	irr
School District	549
Taxes	\$220
Taxes with Assessments	\$220
Tax Year	2024

Additional Features:

Driving Directions:

ottertail



Listed By:
Century 21 FM Realty

Affinity Real Estate Inc. participates in the Regional Multiple Listing Service of Minnesota, Inc Broker Reciprocity (sm) program, allowing us to display other broker's listings on our website. All properties are subject to prior sale, change or withdrawal.



Call Affinity Real Estate

218-237-3333

info@affinityrealestate.com



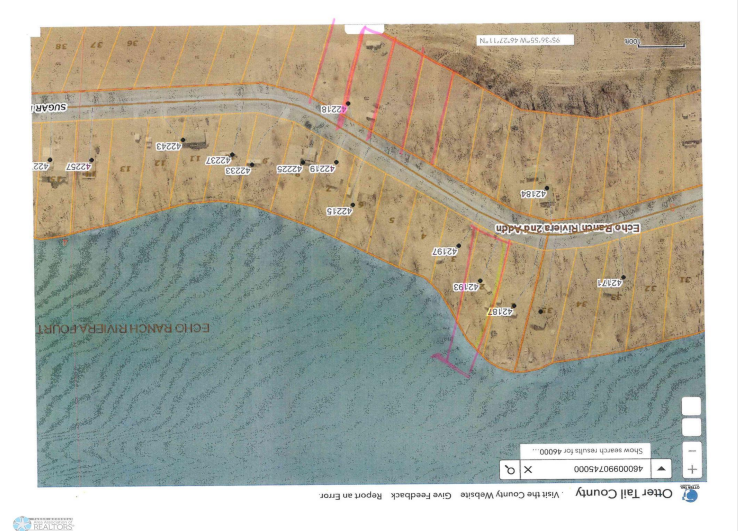
Affinity Real Estate - 600 Park Avenue South - Park Rapids MN 56470



website: www.AffinityRealEstate.com | email: info@affinityrealestate.com | office: 218-237-3333 | fax: 218-237-3377



\$100,000
 MLS 6764023 Lake Land
 42193 Sugar Maple Drive
 Ottertail MN 56571



website: www.AffinityRealEstate.com | email: info@affinityrealestate.com | office: 218-237-3333 | fax: 218-237-3377



\$100,000
 MLS 6764023 Lake Land
 42193 Sugar Maple Drive
 Ottertail MN 56571