



MLS 6764061 Lake Home

**\$525,000**

1,107 sq ft  
3 bedrooms  
1 baths

14986 Big Stony Drive  
Park Rapids MN 56470

Waterfront: Big Stony

Status: Pending

**Description:**

450' of Lakefront on this clean & clear Premier 343.38 acre Big Stony Lake, 5.25 Acre Lot with 3 Red Pine Log Cabins, Lake mean depth is 10' and Max Depth is 24'. A-Frame has a loft, Main Cabin has a front porch. Main Cabin and Shower Cabin have a metal roofs.

**Additional Details:**

Year Built	1972
Lot Acres	5.25
Lot Dimensions	284x308x480x436x101x309
School District	309
Taxes	\$3,586
Taxes with Assessments	\$3,586
Tax Year	2025

**Additional Features:**

**Fuel:** Electric **Heat:** Wood Stove

**Driving Directions:**

From US-10 W turn right onto MN-210 E, left onto MN-64 N, turn left onto MN-64 N/MN-87 W go 5 miles turn left onto MN-87 W, turn right onto 209th Ave, 1 mile, turn right onto Big Stony Dr. 1.7 miles



Listed By:  
The Biren Realty Group

Affinity Real Estate Inc. participates in the Regional Multiple Listing Service of Minnesota, Inc Broker Reciprocity (sm) program, allowing us to display other broker's listings on our website. All properties are subject to prior sale, change or withdrawal.



**Call Affinity Real Estate**

**218-237-3333**

**info@affinityrealestate.com**



**Affinity Real Estate - 600 Park Avenue South - Park Rapids MN 56470**





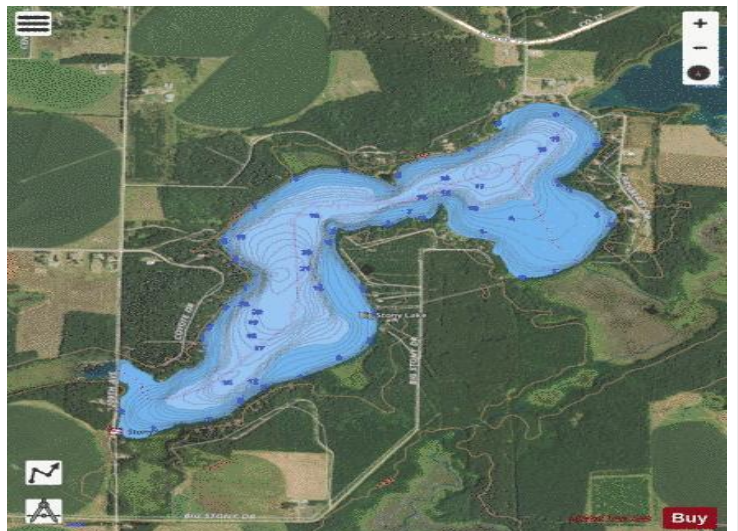
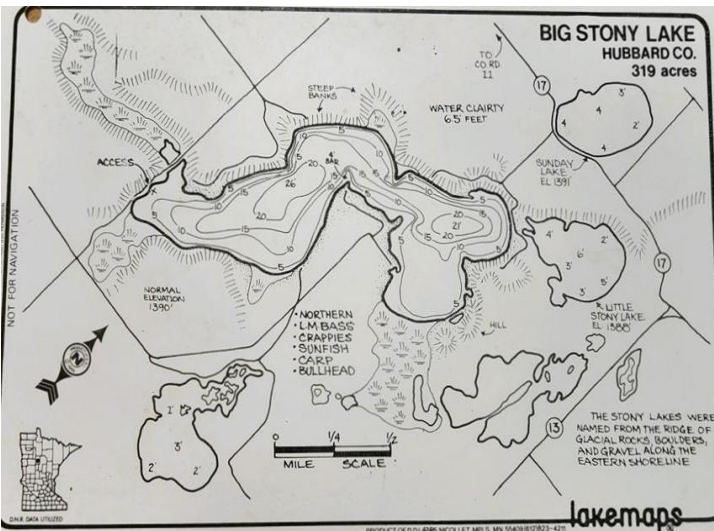
website: [www.AffinityRealEstate.com](http://www.AffinityRealEstate.com) | email: [info@affinityrealestate.com](mailto:info@affinityrealestate.com) | office: 218-237-3333 | fax: 218-237-3377

**Affinity**  
REAL ESTATE INC

**\$525,000**

MLS 6764061 Lake Home  
14986 Big Stony Drive  
Park Rapids MN 56470





website: [www.AffinityRealEstate.com](http://www.AffinityRealEstate.com) | email: [info@affinityrealestate.com](mailto:info@affinityrealestate.com) | office: 218-237-3333 | fax: 218-237-3377

**Affinity**  
REAL ESTATE INC

**\$525,000**  
MLS 6764061 Lake Home  
14986 Big Stony Drive  
Park Rapids MN 56470