



MLS 6764077 Residential

\$1,599,900

2,880 sq ft
3 bedrooms
3 baths

1519 Allen A Dale Way Way
Nisswa MN 56468

Status: Hold

Description:

Stunning Custom-Designed Home on Lake Margaret – Gull Lake Chain

This gorgeous, architecturally designed 3-bedroom, 3-bathroom lake home is a rare find on the shores of Lake Margaret. Just two years old, this custom-built residence is loaded with high-end finishes and thoughtful design elements throughout.

Step inside to find luxury vinyl plank flooring, striking black Pella windows, and soaring 11-foot shiplap ceilings with rich alder wood beams. The spacious living area is anchored by a beautiful stone gas fireplace with a custom concrete mantel, offering warmth and ambiance.

The gourmet kitchen is a chef's dream, featuring custom alder cabinetry, stainless steel appliances, granite countertops, under-cabinet lighting, and a large island perfect for entertaining.

A wall of lakeside windows floods the home with natural light and offers breathtaking southwest views of the lake. The primary suite is a peaceful retreat with 9-foot ceilings, an ensuite bath with a ceramic walk-in shower, and a large closet. The main level includes a second lakeside bedroom, a full bathroom, a flex room/third bedroom, and a cozy family room that walks out to a large lakeside patio—ideal for indoor-outdoor living.

Enjoy gentle elevation to 50 feet of private shoreline, complete with a firepit area and level seating at the water's edge. The heated 2-car garage includes additional utility space. Located in a prime location with easy access to town, upscale dining, paved walking/biking trails, and multiple holes of championship golf, this home offers the perfect blend of luxury, comfort, and outdoor recreation.

Additional Details:

Year Built	2023
Lot Acres	0.4
Lot Dimensions	50x278x61x226
Garage Stalls	2
School District	896
Taxes	\$3,014
Taxes with Assessments	\$3,080
Tax Year	2025



Listed By:
CEPA Realty, LLC

Driving Real Estate: Affinity Real Estate Inc. participates in the Regional Multiple Listing Service of Minnesota, Inc Broker Reciprocity (sm) program, allowing us to display other broker's listings on our website. All properties are subject to prior sale, change of ownership, or withdrawal.



Call Affinity Real Estate

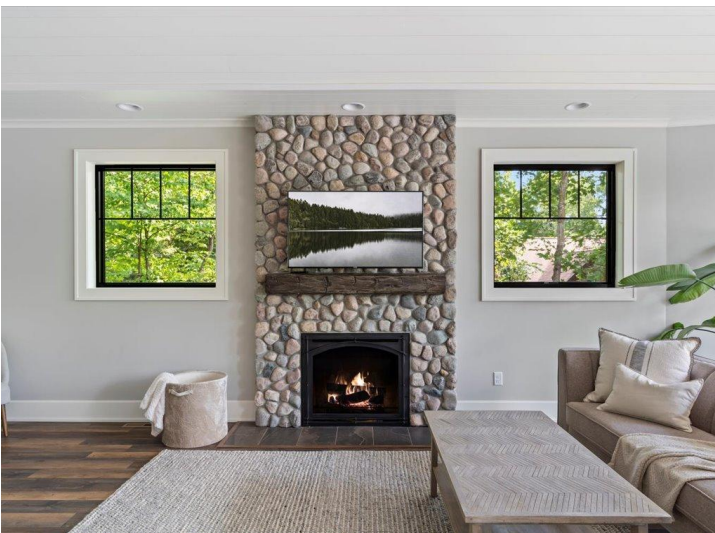
218-237-3333

info@affinityrealestate.com

on Nottingham Rd to



Affinity Real Estate - 600 Park Avenue South - Park Rapids MN 56470



website: www.AffinityRealEstate.com | email: info@affinityrealestate.com | office: 218-237-3333 | fax: 218-237-3377

Affinity
REAL ESTATE INC

\$1,599,900

MLS 6764077 Residential
1519 Allen A Dale Way Way
Nisswa MN 56468



website: www.AffinityRealEstate.com | email: info@affinityrealestate.com | office: 218-237-3333 | fax: 218-237-3377

Affinity
REAL ESTATE INC

\$1,599,900
MLS 6764077 Residential
1519 Allen A Dale Way Way
Nisswa MN 56468

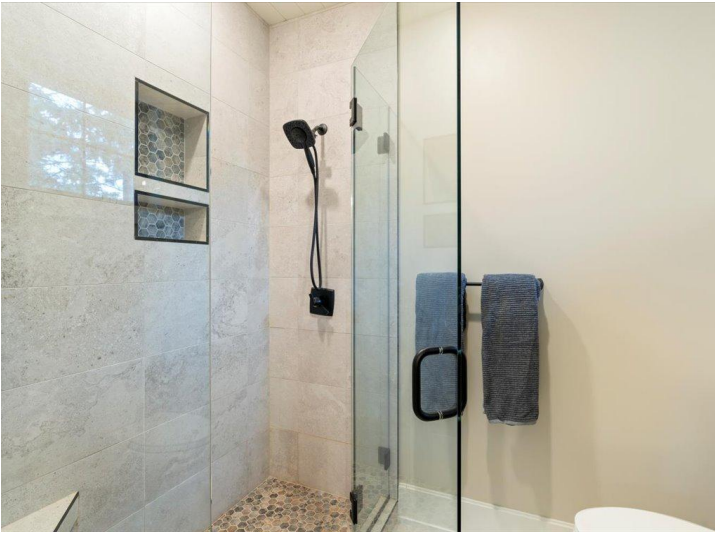


website: www.AffinityRealEstate.com | email: info@affinityrealestate.com | office: 218-237-3333 | fax: 218-237-3377

Affinity
REAL ESTATE INC

\$1,599,900

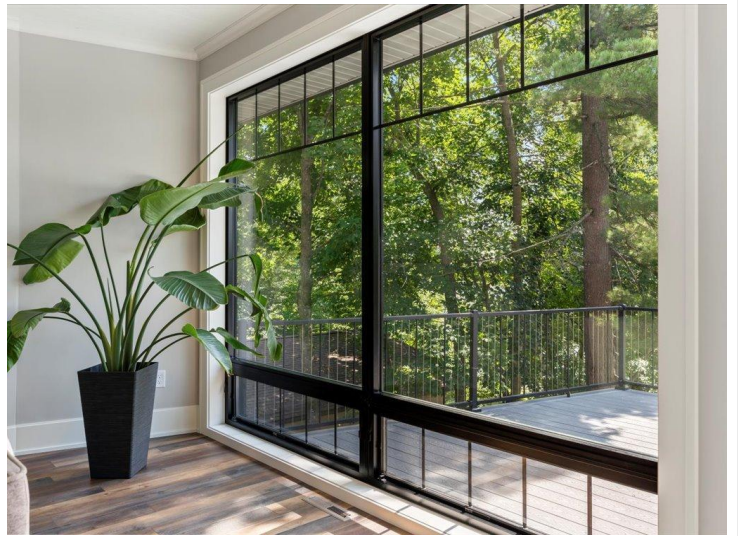
MLS 6764077 Residential
1519 Allen A Dale Way Way
Nisswa MN 56468



website: www.AffinityRealEstate.com | email: info@affinityrealestate.com | office: 218-237-3333 | fax: 218-237-3377



\$1,599,900
 MLS 6764077 Residential
 1519 Allen A Dale Way Way
 Nisswa MN 56468



website: www.AffinityRealEstate.com | email: info@affinityrealestate.com | office: 218-237-3333 | fax: 218-237-3377

Affinity
REAL ESTATE INC

\$1,599,900
MLS 6764077 Residential
1519 Allen A Dale Way Way
Nisswa MN 56468



website: www.AffinityRealEstate.com | email: info@affinityrealestate.com | office: 218-237-3333 | fax: 218-237-3377

Affinity
REAL ESTATE INC

\$1,599,900
MLS 6764077 Residential
1519 Allen A Dale Way Way
Nisswa MN 56468



website: www.AffinityRealEstate.com | email: info@affinityrealestate.com | office: 218-237-3333 | fax: 218-237-3377



\$1,599,900
MLS 6764077 Residential
1519 Allen A Dale Way Way
Nisswa MN 56468

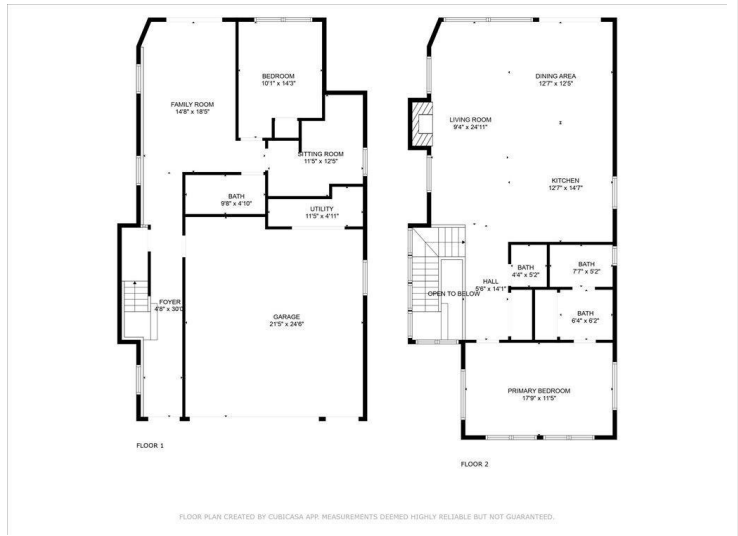


website: www.AffinityRealEstate.com | email: info@affinityrealestate.com | office: 218-237-3333 | fax: 218-237-3377

Affinity
REAL ESTATE INC

\$1,599,900

MLS 6764077 Residential
1519 Allen A Dale Way Way
Nisswa MN 56468



website: www.AffinityRealEstate.com | email: info@affinityrealestate.com | office: 218-237-3333 | fax: 218-237-3377



\$1,599,900

MLS 6764077 Residential
1519 Allen A Dale Way Way
Nisswa MN 56468