

MLS 6764147 Land

\$170,000

31.63 Acres
Raw Land

TBD* C.R. #115
Pine River MN 56474

Status: Pending

Description:

WILSON TWP - THIS HEAVILY TREED 31(+) ACRES OF PREDOMINANTLY HARDWOODS AND HIGH GROUND IS THE IDEAL HOME SITE SETTING ON EXCELLENT BLACKTOP FRONTAGE WITH QUICK ACCESS TO #371.

Additional Details:

Lot Acres	31.63
Lot Dimensions	132'x330'x1207'x1000'x1320'x1320'
School District	2174
Taxes	\$624
Taxes with Assessments	\$624
Tax Year	2025

Additional Features:

Driving Directions:

HWY 371 IN JENKINS, TURN WEST ON 44TH STREET FOR APPROXIMATELY 1 MILE TO PROPERTY ON RIGHT.



Listed By:
Heartland Real Estate

Affinity Real Estate Inc. participates in the Regional Multiple Listing Service of Minnesota, Inc Broker Reciprocity (sm) program, allowing us to display other broker's listings on our website. All properties are subject to prior sale, change or withdrawal.



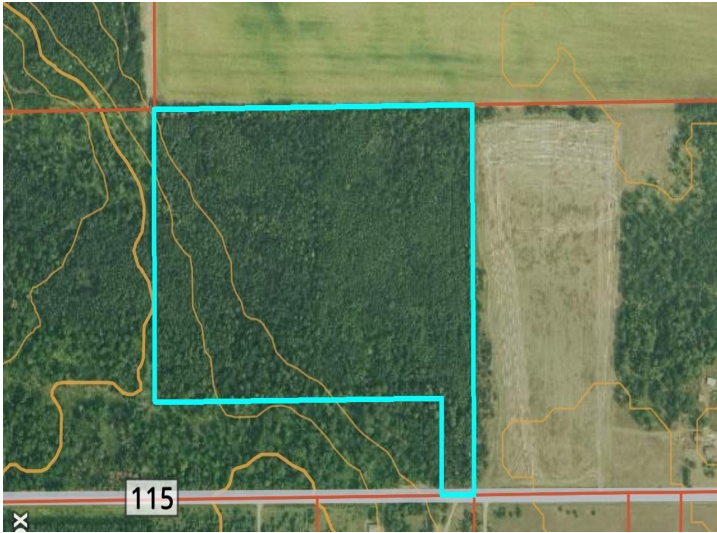
Call Affinity Real Estate

218-237-3333

info@affinityrealestate.com



Affinity Real Estate - 600 Park Avenue South - Park Rapids MN 56470



website: www.AffinityRealEstate.com | email: info@affinityrealestate.com | office: 218-237-3333 | fax: 218-237-3377



\$170,000
 MLS 6764147 Land
 TBD* C.R. #115
 Pine River MN 56474