



MLS 6764154 Land

**\$29,900**

3.8 Acres  
Subdivided

Lot 4 Gasparilla Trail  
Park Rapids MN 56470

Status: Pending

**Description:**

A nicely wooded 3.8 acres parcel. Driveway is already installed and has an area cleared. Located just 6 miles North of Park Rapids in a lightly developed, covenant prospected, subdivision. Lots of privacy, low traffic, and paved streets. Electric and fiber optic internet in the street. A very nice home sit in the country. In proximity to Potato Lake and Blue Lake.

**Additional Details:**

Lot Acres	3.8
Lot Dimensions	427x367
School District	309
Taxes	\$112
Taxes with Assessments	\$112
Tax Year	2025

**Additional Features:**

**Driving Directions:**

From Park Rapids: Head East on 34 to County 4, North on County 4 for 4.9 miles, left on 230th Street, follow 0.6 miles, right on Gasparilla Drive for 0.3 miles, turn right on Gasparilla Trail and follow to the end.



Listed By:  
Coldwell Banker Crown Realtors

Affinity Real Estate Inc. participates in the Regional Multiple Listing Service of Minnesota, Inc Broker Reciprocity (sm) program, allowing us to display other broker's listings on our website. All properties are subject to prior sale, change or withdrawal.



**Call Affinity Real Estate**

**218-237-3333**

**info@affinityrealestate.com**



**Affinity Real Estate - 600 Park Avenue South - Park Rapids MN 56470**



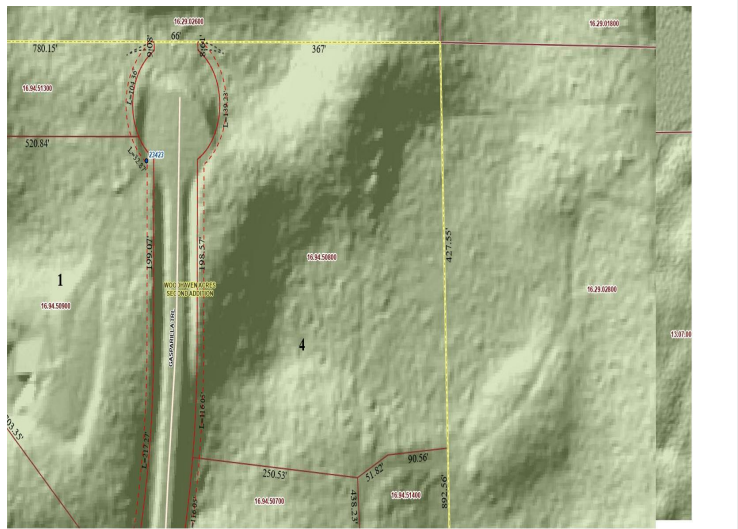


website: [www.AffinityRealEstate.com](http://www.AffinityRealEstate.com) | email: [info@affinityrealestate.com](mailto:info@affinityrealestate.com) | office: 218-237-3333 | fax: 218-237-3377



**\$29,900**  
 MLS 6764154 Land  
 Lot 4 Gasparilla Trail  
 Park Rapids MN 56470





website: [www.AffinityRealEstate.com](http://www.AffinityRealEstate.com) | email: [info@affinityrealestate.com](mailto:info@affinityrealestate.com) | office: 218-237-3333 | fax: 218-237-3377



**\$29,900**  
 MLS 6764154 Land  
 Lot 4 Gasparilla Trail  
 Park Rapids MN 56470