



MLS 6764375 Land

\$29,000

5.05 Acres
Subdivided

333XX 612th Ave [K]
Wadena MN 56482

Status: Active

Description:

BUILD-READY LOT! This 5-Acre parcel offers a Prime Building Opportunity in a new Rural Development near Wadena. With its Level Landscape and Generous Acreage, you'll have ample space to design your Ideal Home, establish Gardens, or add Outbuildings.

Located just minutes from Downtown and the New Hospital, this property combines the best of Country Living with a Convenient Commute. A newly installed Gravel Road provides Easy Access—secure your spot in this Peaceful and Expanding Neighborhood today!

Additional Details:

Lot Acres	5.05
Lot Dimensions	551 x 192 x 168 x 300 x 383 x 457
School District	2155
Taxes	\$762
Taxes with Assessments	\$762
Tax Year	2024

Additional Features:

Driving Directions:

Head east on US-10 E toward Breuer Ave, then turn right onto Co Hwy 77. After 1.6 miles, turn left toward Wadena Municipal Airport. The destination will be on the right after .1 miles.



Listed By:
Jack Chivers Realty

Affinity Real Estate Inc. participates in the Regional Multiple Listing Service of Minnesota, Inc Broker Reciprocity (sm) program, allowing us to display other broker's listings on our website. All properties are subject to prior sale, change or withdrawal.



Call Affinity Real Estate

218-237-3333

info@affinityrealestate.com



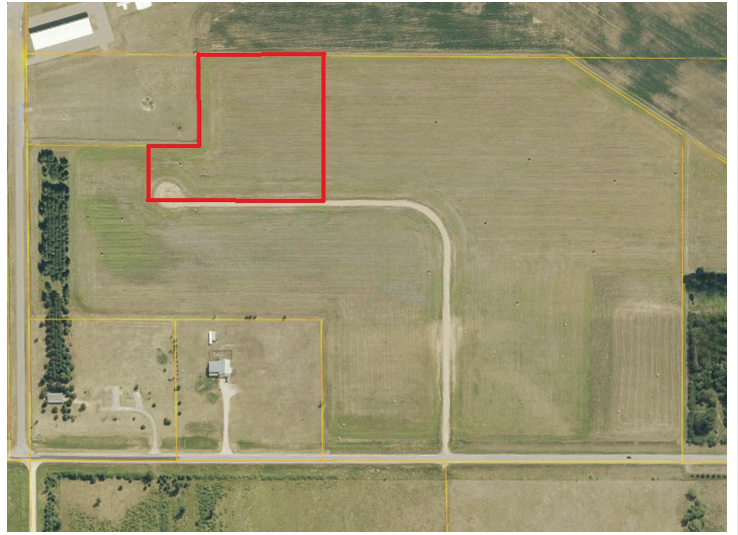
Affinity Real Estate - 600 Park Avenue South - Park Rapids MN 56470



website: www.AffinityRealEstate.com | email: info@affinityrealestate.com | office: 218-237-3333 | fax: 218-237-3377



\$29,000
MLS 6764375 Land
333XX 612th Ave [K]
Wadena MN 56482



website: www.AffinityRealEstate.com | email: info@affinityrealestate.com | office: 218-237-3333 | fax:218-237-3377



\$29,000
MLS 6764375 Land
333XX 612th Ave [K]
Wadena MN 56482