

MLS 6764611 Land

\$57,500

2.58 Acres
Finished Lot(s)

XXX10 My Abbys Way Lane
Pequot Lakes MN 56472

Status: Pending

Description:

New residential neighborhood in the heart of the Nisswa and Pequot Lakes area. Nicely wooded 2.25+ acre lots are designed to offer peace and privacy in a rural setting and a great location for your new home. New streets are now paved and ditches hydroseeded, quiet streets without through traffic. Drive through anytime! Parcels other than those in MLS may be available at this time. Close to Gull Lake, Pillsbury State forest, Pelican lake, championship golf and all the lakes area has to offer. See covenants and plat in supplements.

Additional Details:

Lot Acres	2.58
Lot Dimensions	293x508xIRR
School District	186
Taxes	\$268
Taxes with Assessments	\$334
Tax Year	2025

Additional Features:

Driving Directions:

From Nisswa, North on Hwy 371 to Left on Co Rd 29 (Wilderness Rd) to Right on Co Rd 78 (17th Ave) to Left on 72nd St SW, first left on Smiley Way to sign.



Listed By:
Kurilla Real Estate LTD

Affinity Real Estate Inc. participates in the Regional Multiple Listing Service of Minnesota, Inc Broker Reciprocity (sm) program, allowing us to display other broker's listings on our website. All properties are subject to prior sale, change or withdrawal.



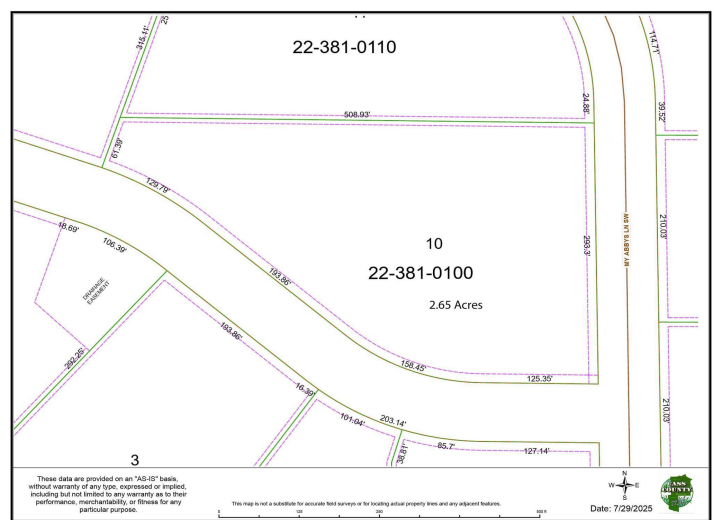
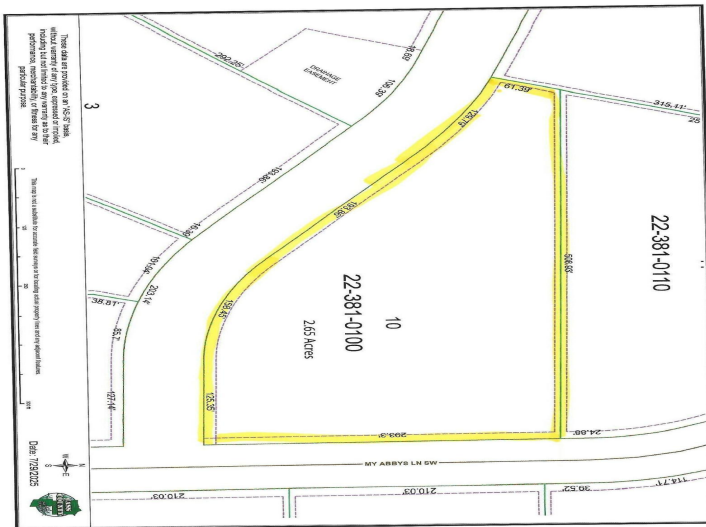
Call Affinity Real Estate

218-237-3333

info@affinityrealestate.com



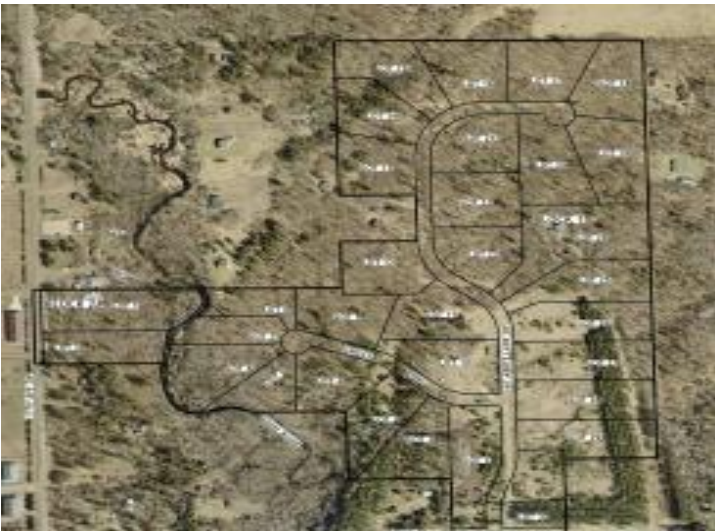
Affinity Real Estate - 600 Park Avenue South - Park Rapids MN 56470



website: www.AffinityRealEstate.com | email: info@affinityrealestate.com | office: 218-237-3333 | fax: 218-237-3377

Affinity
REAL ESTATE INC

\$57,500
MLS 6764611 Land
XXX10 My Abbys Way Lane
Pequot Lakes MN 56472



website: www.AffinityRealEstate.com | email: info@affinityrealestate.com | office: 218-237-3333 | fax: 218-237-3377



\$57,500
 MLS 6764611 Land
 XXX10 My Abbys Way Lane
 Pequot Lakes MN 56472

website: www.AffinityRealEstate.com | email: info@affinityrealestate.com | office: 218-237-3333 | fax:218-237-3377



\$57,500

MLS 6764611 Land
XXX10 My Abbys Way Lane
Pequot Lakes MN 56472