



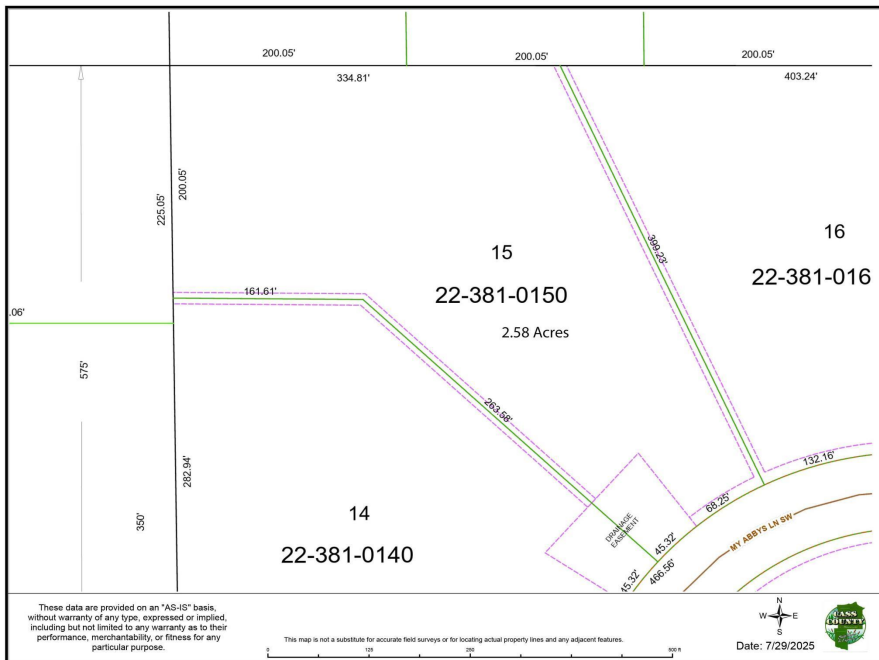
MLS 6764680 Land

**\$57,500**

2.65 Acres  
Finished Lot(s)

XXX15 My Abbys Way Lane  
Pequot Lakes MN 56472

Status: Active



#### Description:

New residential neighborhood in the heart of the Nisswa and Pequot Lakes area. Nicely wooded 2.25+ acre lots are designed to offer peace and privacy in a rural setting and a great location for your new home. New streets are now paved and ditches hydroseeded, quiet streets without through traffic. Crow wing power and TDS fiber optics available at the street. Drive through anytime! Parcels other then those in MLS may be available at this time. Close to Gull Lake, Pillsbury State forest, Pelican lake, championship golf and all the lakes area has to offer. See covenants and plat in supplements.

#### Additional Details:

Lot Acres	2.65
Lot Dimensions	113x399x334x200x161x263
School District	186
Taxes	\$58
Taxes with Assessments	\$58
Tax Year	2025

#### Additional Features:

#### Driving Directions:

From Nisswa, North on Hwy 371 to Left on Co Rd 29 (Wilderness Rd) to Right on Co Rd 78 (17th Ave) to Left on 72nd St SW, first left on Smiley Way to sign.



Listed By:  
Kurilla Real Estate LTD

Affinity Real Estate Inc. participates in the Regional Multiple Listing Service of Minnesota, Inc Broker Reciprocity (sm) program, allowing us to display other broker's listings on our website. All properties are subject to prior sale, change or withdrawal.



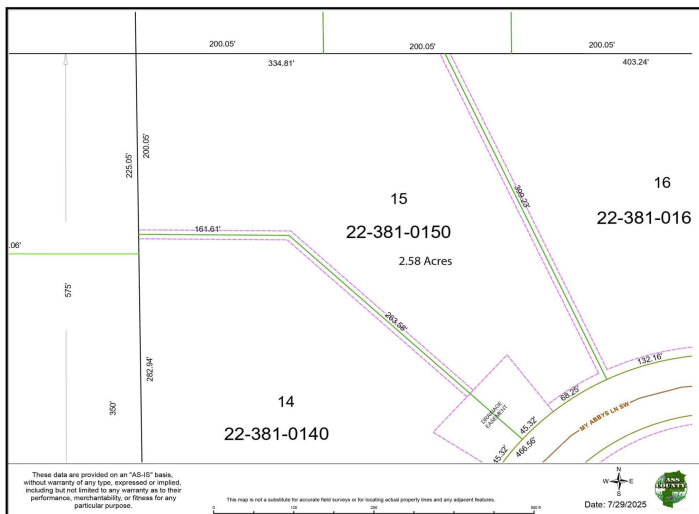
Call Affinity Real Estate

**218-237-3333**

[info@affinityrealestate.com](mailto:info@affinityrealestate.com)



Affinity Real Estate - 600 Park Avenue South - Park Rapids MN 56470

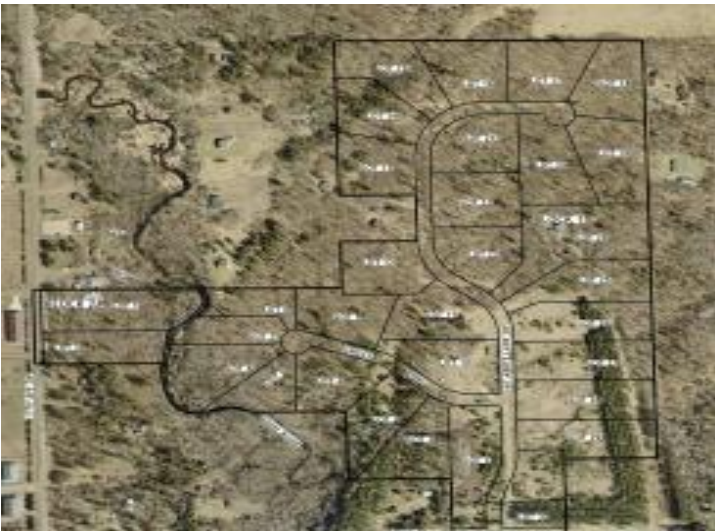


website: [www.AffinityRealEstate.com](http://www.AffinityRealEstate.com) | email: [info@affinityrealestate.com](mailto:info@affinityrealestate.com) | office: 218-237-3333 | fax: 218-237-3377

**Affinity**  
REAL ESTATE INC

**\$57,500**  
MLS 6764680 Land  
XXX15 My Abbys Way Lane  
Pequot Lakes MN 56472





website: [www.AffinityRealEstate.com](http://www.AffinityRealEstate.com) | email: [info@affinityrealestate.com](mailto:info@affinityrealestate.com) | office: 218-237-3333 | fax: 218-237-3377



**\$57,500**  
 MLS 6764680 Land  
 XXX15 My Abbys Way Lane  
 Pequot Lakes MN 56472

website: [www.AffinityRealEstate.com](http://www.AffinityRealEstate.com) | email: [info@affinityrealestate.com](mailto:info@affinityrealestate.com) | office: 218-237-3333 | fax:218-237-3377



**\$57,500**

MLS 6764680 Land  
XXX15 My Abbys Way Lane  
Pequot Lakes MN 56472