



MLS 6765600 Residential

**\$349,900**

2,300 sq ft  
4 bedrooms  
2 baths

3883 County 1  
Pine River MN 56474

Status: Active

#### Description:

Welcome to your serene escape in beautiful Pine River! This freshly remodeled 4-bedroom, 2-bath home combines modern comfort with the natural charm of northern Minnesota living. Nestled on a private 6+ acre lot surrounded by trees, this home offers peace, privacy, and space. Step inside to an open-concept layout featuring an updated kitchen with stainless steel appliances, new flooring, and two spacious decks to extend your living space outdoors, ideal for morning coffee or evening gatherings. The finished walkout lower level adds incredible versatility with two bedrooms, a full bathroom, and direct access to the peaceful backyard. Whether you need guest space, a home office, or a family room, this level provides flexible living options to fit your lifestyle. Located just minutes from lakes, trails, and town amenities, this property offers the perfect balance of convenience and seclusion. Whether you're looking for a full-time residence or a peaceful weekend retreat, this move-in-ready home delivers comfort, style, and Northwoods charm.

#### Additional Details:

Year Built	2005
Lot Acres	6.8
Lot Dimensions	6.8 acres
Garage Stalls	2
School District	2174
Taxes	\$1,154
Taxes with Assessments	\$1,220
Tax Year	2024

#### Additional Features:

**Basement:** Egress Window(s), Full, Walkout **Fuel:** Electric **Garage:** 2 **Heat:** Boiler, Radiant Floor **Sewer:** Mound Septic, Private Sewer, Septic System Compliant - Yes **Water:** Drilled, Private, Well **Air Conditioning:** Central Air

#### Driving Directions:

3.5 Miles south of Pine River on County 1 to 3883 on right.



Listed By:  
eXp Realty

Affinity Real Estate Inc. participates in the Regional Multiple Listing Service of Minnesota, Inc Broker Reciprocity (sm) program, allowing us to display other broker's listings on our website. All properties are subject to prior sale, change or withdrawal.



Call Affinity Real Estate

**218-237-3333**

[info@affinityrealestate.com](mailto:info@affinityrealestate.com)



Affinity Real Estate - 600 Park Avenue South - Park Rapids MN 56470





website: [www.AffinityRealEstate.com](http://www.AffinityRealEstate.com) | email: [info@affinityrealestate.com](mailto:info@affinityrealestate.com) | office: 218-237-3333 | fax: 218-237-3377

**Affinity**  
REAL ESTATE INC

**\$349,900**  
MLS 6765600 Residential  
3883 County 1  
Pine River MN 56474





website: [www.AffinityRealEstate.com](http://www.AffinityRealEstate.com) | email: [info@affinityrealestate.com](mailto:info@affinityrealestate.com) | office: 218-237-3333 | fax: 218-237-3377



**\$349,900**  
 MLS 6765600 Residential  
 3883 County 1  
 Pine River MN 56474



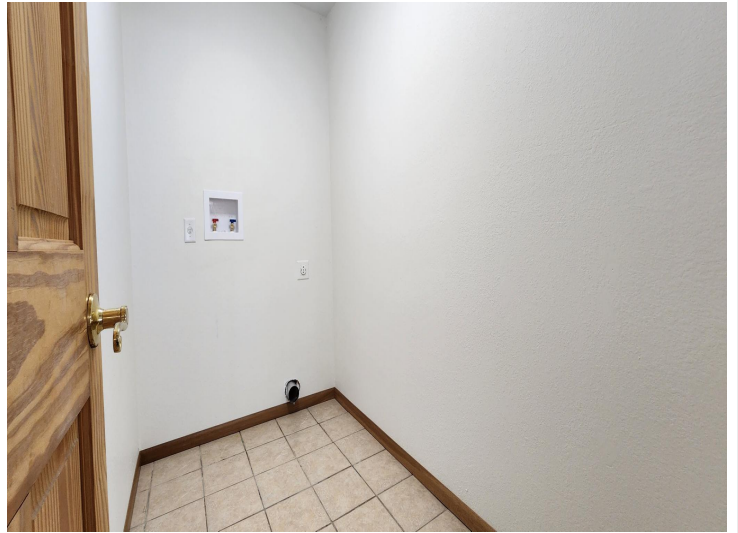


website: [www.AffinityRealEstate.com](http://www.AffinityRealEstate.com) | email: [info@affinityrealestate.com](mailto:info@affinityrealestate.com) | office: 218-237-3333 | fax: 218-237-3377



**\$349,900**  
MLS 6765600 Residential  
3883 County 1  
Pine River MN 56474



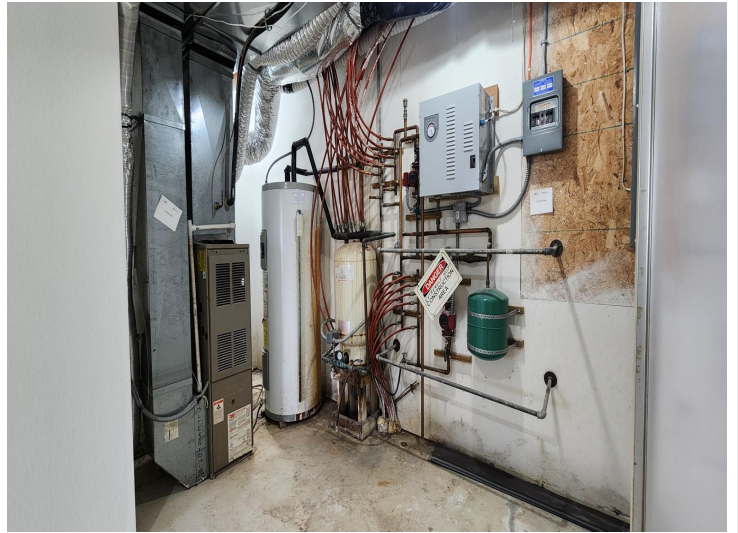


website: [www.AffinityRealEstate.com](http://www.AffinityRealEstate.com) | email: [info@affinityrealestate.com](mailto:info@affinityrealestate.com) | office: 218-237-3333 | fax: 218-237-3377



**\$349,900**  
 MLS 6765600 Residential  
 3883 County 1  
 Pine River MN 56474





website: [www.AffinityRealEstate.com](http://www.AffinityRealEstate.com) | email: [info@affinityrealestate.com](mailto:info@affinityrealestate.com) | office: 218-237-3333 | fax: 218-237-3377



**\$349,900**  
 MLS 6765600 Residential  
 3883 County 1  
 Pine River MN 56474





website: [www.AffinityRealEstate.com](http://www.AffinityRealEstate.com) | email: [info@affinityrealestate.com](mailto:info@affinityrealestate.com) | office: 218-237-3333 | fax: 218-237-3377



**\$349,900**  
MLS 6765600 Residential  
3883 County 1  
Pine River MN 56474