



MLS 6765914 Residential

**\$439,999**

2,280 sq ft  
3 bedrooms  
3 baths

144 Margos Way  
Bemidji MN 56601

Status: Pending

#### Description:

Beautiful 3 bedroom, 2 1/2 bathroom home in a wonderful location. Tongue and groove covered porch, front entrance leading to a large entryway with laundry and a half bath. Open concept living with a kitchen that offers stainless steel appliances, a large center island, and pantry. Primary bedroom suite with two closets (one is a large walk-in) and a bathroom featuring double sinks and a tiled shower. The walk-out family room has plenty of natural light including a large glass slider leading out to a patio, A sand volleyball court, and a 16x32 heated underground pool have been recently added to this home. There is a large deck overlooking the private backyard. Property offers a paved driveway, insulated garage, and lots of extra storage in the storage area under the stairs. The yard has been updated with sod, flowerbeds, and retaining walls. A lighted wood privacy fence greets you as you pull into the driveway.

#### Additional Details:

Year Built	2018
Lot Acres	2
Lot Dimensions	300x290
Garage Stalls	2
School District	31
Taxes	\$3,072
Taxes with Assessments	\$3,072
Tax Year	2023

#### Additional Features:

**Fuel:** Propane **Heat:** Forced Air

#### Driving Directions:

From Bemidji, south on Hwy 71 / Hwy 2. Near Pete's Place gas station, continue south on Hwy 71 to west on Oak Hills Rd. Take first left (south) onto Margos way and follow loop to house #144 on west side of the road. Property is just north of Horace-May Elementary School.



Listed By:  
Edina Realty, Inc.

Affinity Real Estate Inc. participates in the Regional Multiple Listing Service of Minnesota, Inc Broker Reciprocity (sm) program, allowing us to display other broker's listings on our website. All properties are subject to prior sale, change or withdrawal.



**Call Affinity Real Estate**

**218-237-3333**

**info@affinityrealestate.com**



**Affinity Real Estate - 600 Park Avenue South - Park Rapids MN 56470**





website: [www.AffinityRealEstate.com](http://www.AffinityRealEstate.com) | email: [info@affinityrealestate.com](mailto:info@affinityrealestate.com) | office: 218-237-3333 | fax: 218-237-3377

**Affinity**  
REAL ESTATE INC

**\$439,999**  
MLS 6765914 Residential  
144 Margos Way  
Bemidji MN 56601





website: [www.AffinityRealEstate.com](http://www.AffinityRealEstate.com) | email: [info@affinityrealestate.com](mailto:info@affinityrealestate.com) | office: 218-237-3333 | fax: 218-237-3377

**Affinity**  
REAL ESTATE INC

**\$439,999**  
MLS 6765914 Residential  
144 Margos Way  
Bemidji MN 56601





website: [www.AffinityRealEstate.com](http://www.AffinityRealEstate.com) | email: [info@affinityrealestate.com](mailto:info@affinityrealestate.com) | office: 218-237-3333 | fax: 218-237-3377



**\$439,999**  
 MLS 6765914 Residential  
 144 Margos Way  
 Bemidji MN 56601





website: [www.AffinityRealEstate.com](http://www.AffinityRealEstate.com) | email: [info@affinityrealestate.com](mailto:info@affinityrealestate.com) | office: 218-237-3333 | fax: 218-237-3377



**\$439,999**  
 MLS 6765914 Residential  
 144 Margos Way  
 Bemidji MN 56601





website: [www.AffinityRealEstate.com](http://www.AffinityRealEstate.com) | email: [info@affinityrealestate.com](mailto:info@affinityrealestate.com) | office: 218-237-3333 | fax: 218-237-3377

**Affinity**  
REAL ESTATE INC

**\$439,999**  
MLS 6765914 Residential  
144 Margos Way  
Bemidji MN 56601





website: [www.AffinityRealEstate.com](http://www.AffinityRealEstate.com) | email: [info@affinityrealestate.com](mailto:info@affinityrealestate.com) | office: 218-237-3333 | fax: 218-237-3377

**Affinity**  
REAL ESTATE INC

**\$439,999**  
MLS 6765914 Residential  
144 Margos Way  
Bemidji MN 56601





website: [www.AffinityRealEstate.com](http://www.AffinityRealEstate.com) | email: [info@affinityrealestate.com](mailto:info@affinityrealestate.com) | office: 218-237-3333 | fax: 218-237-3377



**\$439,999**  
 MLS 6765914 Residential  
 144 Margos Way  
 Bemidji MN 56601



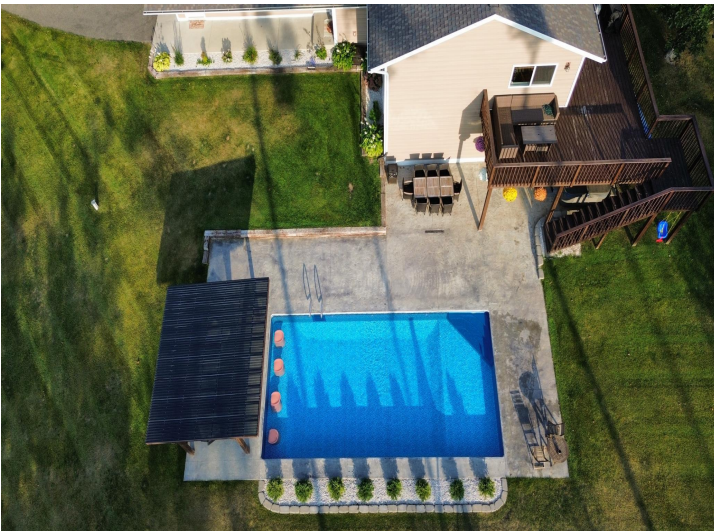


website: [www.AffinityRealEstate.com](http://www.AffinityRealEstate.com) | email: [info@affinityrealestate.com](mailto:info@affinityrealestate.com) | office: 218-237-3333 | fax: 218-237-3377

**Affinity**  
REAL ESTATE INC

**\$439,999**  
MLS 6765914 Residential  
144 Margos Way  
Bemidji MN 56601





website: [www.AffinityRealEstate.com](http://www.AffinityRealEstate.com) | email: [info@affinityrealestate.com](mailto:info@affinityrealestate.com) | office: 218-237-3333 | fax: 218-237-3377

**Affinity**  
REAL ESTATE INC

**\$439,999**  
MLS 6765914 Residential  
144 Margos Way  
Bemidji MN 56601





website: [www.AffinityRealEstate.com](http://www.AffinityRealEstate.com) | email: [info@affinityrealestate.com](mailto:info@affinityrealestate.com) | office: 218-237-3333 | fax: 218-237-3377



**\$439,999**

MLS 6765914 Residential  
144 Margos Way  
Bemidji MN 56601





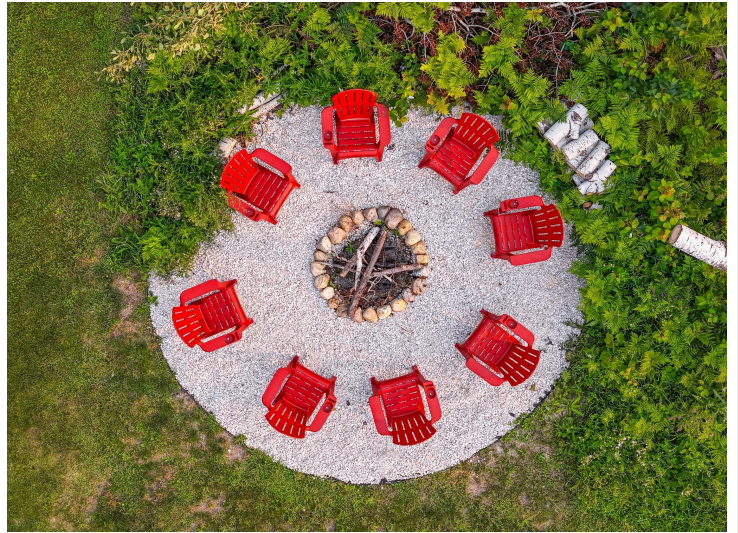
website: [www.AffinityRealEstate.com](http://www.AffinityRealEstate.com) | email: [info@affinityrealestate.com](mailto:info@affinityrealestate.com) | office: 218-237-3333 | fax: 218-237-3377

**Affinity**  
REAL ESTATE INC

**\$439,999**

MLS 6765914 Residential  
144 Margos Way  
Bemidji MN 56601





website: [www.AffinityRealEstate.com](http://www.AffinityRealEstate.com) | email: [info@affinityrealestate.com](mailto:info@affinityrealestate.com) | office: 218-237-3333 | fax: 218-237-3377



**\$439,999**  
 MLS 6765914 Residential  
 144 Margos Way  
 Bemidji MN 56601