



MLS 6766365 Lake Home

\$209,900

936 sq ft
2 bedrooms
2 baths

14590 Gazebo Drive
Park Rapids MN 56470

Waterfront: Potato

Status: Active

Description:

Welcome to North Beach on highly regarded Potato Lake. Excellent opportunity for carefree living in a resort style setting. Just as ideal for someone seeking a smaller primary residence with an atmosphere that makes you feel like you are always on vacation. This nicely updated condo is being sold completely turn-key. It features 2 bedrooms, 2 baths, entry side patio, large lakeside deck and a private boat slip in front of your unit. The association amenities are generous and provide a little something for everyone. This is a perfect opportunity to get on a prime body of water at an entry level price. Potato Lake also provides chain access to Eagle and Island lakes providing over 3000 acres of boating, fishing and fun!

Additional Details:

Year Built	1978
Lot Acres	0.01
Lot Dimensions	18.5x26
School District	309
Taxes	\$1,431
Taxes with Assessments	\$1,652
Tax Year	2025

Additional Features:

Fuel: Electric **Heat:** Baseboard, Heat Pump

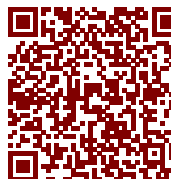
Driving Directions:

From Park Rapids: Go north on Hwy 71 to a right on 230th St. Follow to a left on 141st Ave and continue to a right on Gazebo Dr. Proceed to North Beach Resort.



Listed By:
Affinity Real Estate Inc.

Affinity Real Estate Inc. participates in the Regional Multiple Listing Service of Minnesota, Inc Broker Reciprocity (sm) program, allowing us to display other broker's listings on our website. All properties are subject to prior sale, change or withdrawal.



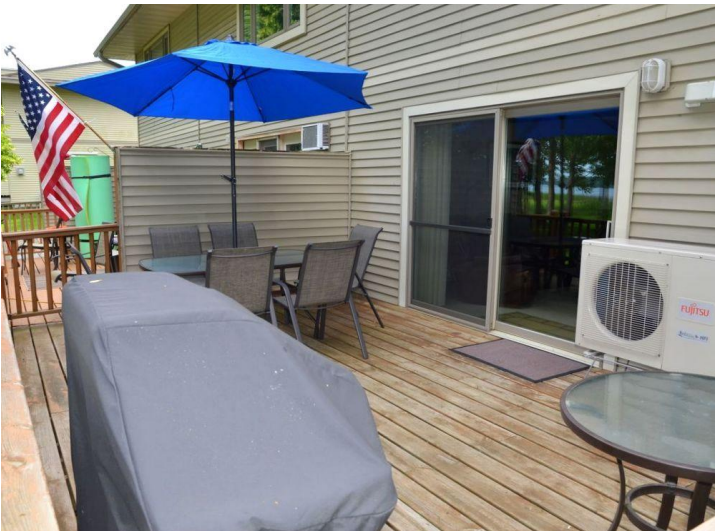
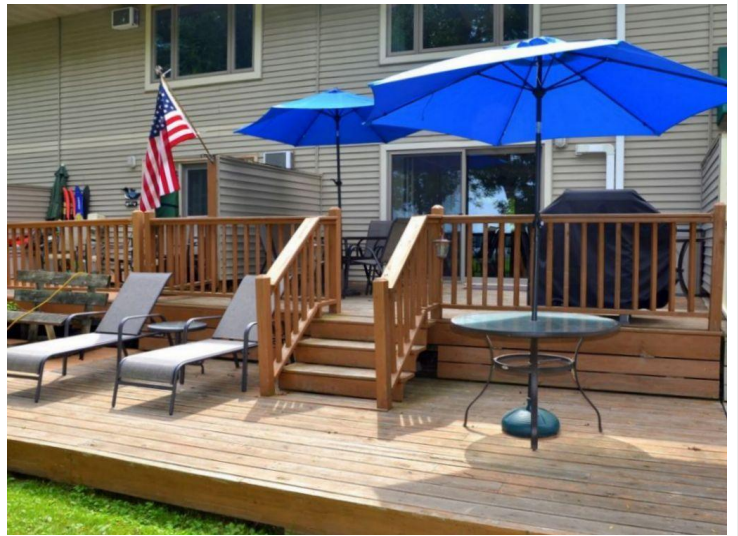
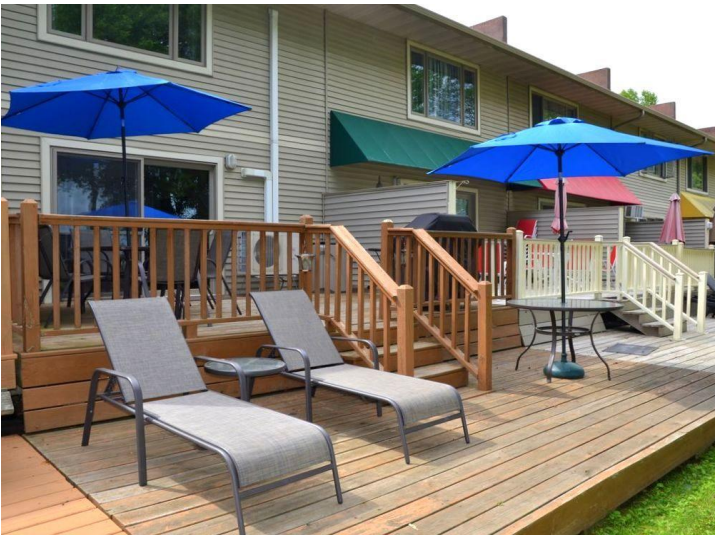
Call Affinity Real Estate

218-237-3333

info@affinityrealestate.com



Affinity Real Estate - 600 Park Avenue South - Park Rapids MN 56470



website: www.AffinityRealEstate.com | email: info@affinityrealestate.com | office: 218-237-3333 | fax: 218-237-3377

Affinity
REAL ESTATE INC

\$209,900

MLS 6766365 Lake Home
14590 Gazebo Drive
Park Rapids MN 56470



website: www.AffinityRealEstate.com | email: info@affinityrealestate.com | office: 218-237-3333 | fax: 218-237-3377



\$209,900
 MLS 6766365 Lake Home
 14590 Gazebo Drive
 Park Rapids MN 56470



website: www.AffinityRealEstate.com | email: info@affinityrealestate.com | office: 218-237-3333 | fax: 218-237-3377

Affinity
REAL ESTATE INC

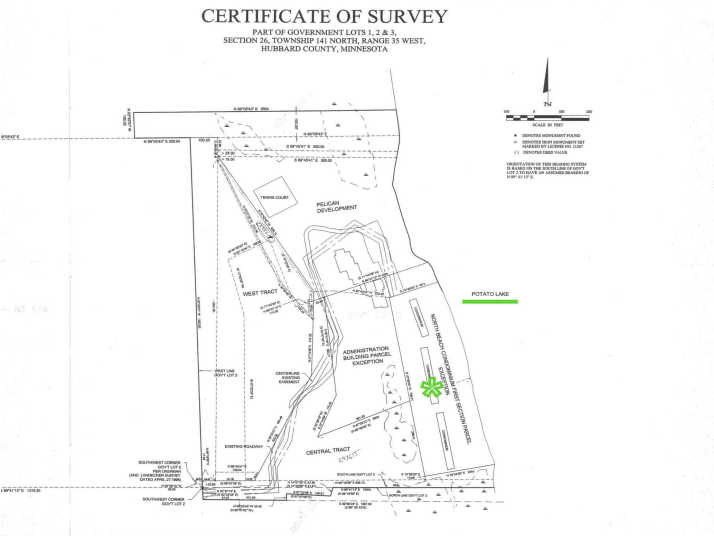
\$209,900
MLS 6766365 Lake Home
14590 Gazebo Drive
Park Rapids MN 56470



website: www.AffinityRealEstate.com | email: info@affinityrealestate.com | office: 218-237-3333 | fax: 218-237-3377



\$209,900
 MLS 6766365 Lake Home
 14590 Gazebo Drive
 Park Rapids MN 56470



website: www.AffinityRealEstate.com | email: info@affinityrealestate.com | office: 218-237-3333 | fax: 218-237-3377



\$209,900
MLS 6766365 Lake Home
14590 Gazebo Drive
Park Rapids MN 56470