



MLS 6766490 Land

\$36,500

0.83 Acres
Subdivided

Lot 12 Block 2 402nd Avenue
Perham MN 56573

Status: Active



Description:

Rural development, whether you are looking for a spot to build a storage building, home, Shouse, or Barndominium, this site has many options. Great Location. Heartland bike trail runs past.

Additional Details:

Lot Acres	0.83
Lot Dimensions	133x270
School District	549
Taxes	\$172
Taxes with Assessments	\$172
Tax Year	2025

Additional Features:

Driving Directions:

Hwy 34 West of Perham 3 miles to 400th Ave then right on 441st St follow to property.



Listed By:
New Horizons Realty Of Perham

Affinity Real Estate Inc. participates in the Regional Multiple Listing Service of Minnesota, Inc Broker Reciprocity (sm) program, allowing us to display other broker's listings on our website. All properties are subject to prior sale, change or withdrawal.



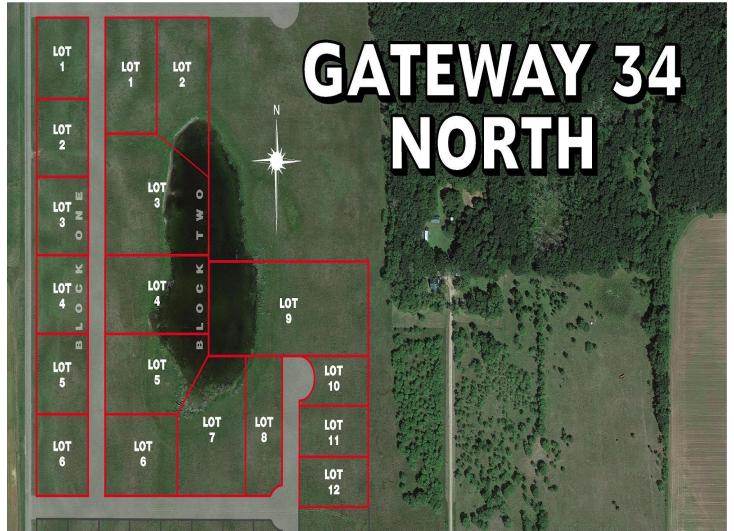
Call Affinity Real Estate

218-237-3333

info@affinityrealestate.com



Affinity Real Estate - 600 Park Avenue South - Park Rapids MN 56470



website: www.AffinityRealEstate.com | email: info@affinityrealestate.com | office: 218-237-3333 | fax:218-237-3377



\$36,500
 MLS 6766490 Land
 Lot 12 Block 2 402nd
 Avenue
 Perham MN 56573