



MLS 6766828 Lake Home

**\$259,900**

656 sq ft  
2 bedrooms  
1 baths

27998 Island View Drive  
Park Rapids MN 56470

Waterfront: Mantrap

Status: Active

#### Description:

Discover the enchanting Big Mantrap Cabin, a charming retreat offering 2 cozy bedrooms and 1 bath, all while overlooking the serene waters of Big Mantrap Lake. With 63 feet of lake frontage, this quaint cabin is perfectly nestled among majestic pines, providing the ideal escape for nature lovers and those seeking tranquility. Embrace the beauty and comfort of this delightful lakeside getaway!

#### Additional Details:

Year Built	1956
Lot Acres	0.17
Lot Dimensions	63x97x63x78
School District	309
Taxes	\$1,061
Taxes with Assessments	\$1,282
Tax Year	2025

#### Additional Features:

**Basement:** Crawl Space **Fuel:** Wood **Heat:** Wood Stove **Sewer:** Septic System Compliant - Yes **Water:** Sand Point **Air Conditioning:** None

#### Driving Directions:

From 34/71 in Park Rapids, East on 34 to Dorset Corner. Turn left on 226 (County 7). Follow to a left on Island View Dr. to property at end of road.



Listed By:  
Wolff & Simon Real Estate

Affinity Real Estate Inc. participates in the Regional Multiple Listing Service of Minnesota, Inc Broker Reciprocity (sm) program, allowing us to display other broker's listings on our website. All properties are subject to prior sale, change or withdrawal.



Call Affinity Real Estate

**218-237-3333**

[info@affinityrealestate.com](mailto:info@affinityrealestate.com)



Affinity Real Estate - 600 Park Avenue South - Park Rapids MN 56470





website: [www.AffinityRealEstate.com](http://www.AffinityRealEstate.com) | email: [info@affinityrealestate.com](mailto:info@affinityrealestate.com) | office: 218-237-3333 | fax: 218-237-3377

**Affinity**  
REAL ESTATE INC

**\$259,900**  
MLS 6766828 Lake Home  
27998 Island View Drive  
Park Rapids MN 56470





website: [www.AffinityRealEstate.com](http://www.AffinityRealEstate.com) | email: [info@affinityrealestate.com](mailto:info@affinityrealestate.com) | office: 218-237-3333 | fax: 218-237-3377

**Affinity**  
REAL ESTATE INC

**\$259,900**  
MLS 6766828 Lake Home  
27998 Island View Drive  
Park Rapids MN 56470



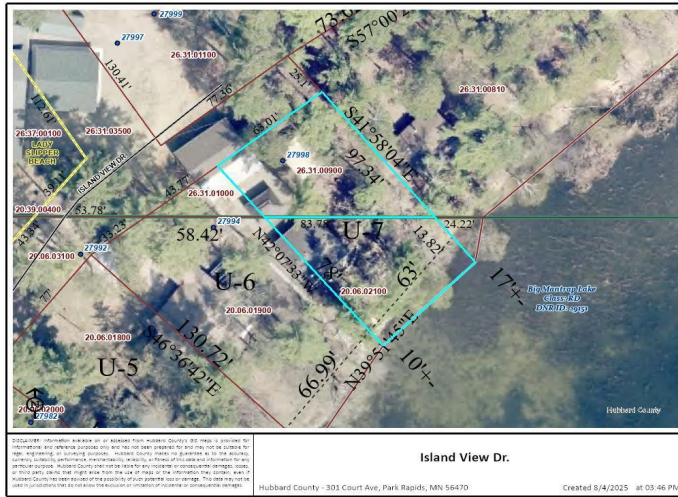


website: [www.AffinityRealEstate.com](http://www.AffinityRealEstate.com) | email: [info@affinityrealestate.com](mailto:info@affinityrealestate.com) | office: 218-237-3333 | fax: 218-237-3377

**Affinity**  
REAL ESTATE INC

**\$259,900**  
MLS 6766828 Lake Home  
27998 Island View Drive  
Park Rapids MN 56470





website: [www.AffinityRealEstate.com](http://www.AffinityRealEstate.com) | email: [info@affinityrealestate.com](mailto:info@affinityrealestate.com) | office: 218-237-3333 | fax: 218-237-3377



**\$259,900**  
MLS 6766828 Lake Home  
27998 Island View Drive  
Park Rapids MN 56470