



MLS 6766841 Commercial

**\$315,000**

600 Washington Avenue  
Detroit Lakes MN 56501

Status: Active

**Description:**

Prime-time Commercial Location in the heart of Detroit Lakes! This 1100+ sq ft facility is ready to be part of the big move your company needs, with high visibility traffic outside and a clean, finished blank canvas inside. Sale to include Building and Land only.

**Additional Details:**

Year Built	1999
Lot Acres	0.08
Lot Dimensions	IRR
School District	22
Taxes	\$1,658
Taxes with Assessments	\$1,658
Tax Year	2025

**Additional Features:**

**Basement:** Crawl Space **Fuel:** Electric, Natural Gas **Heat:** Boiler, Radiant Floor **Sewer:** City Sewer/Connected **Water:** City Water/Connected **Air Conditioning:** Ductless Mini-Split

**Driving Directions:**

At the main intersection of Washington Avenue and Hwy 10, just on North side of railroad tracks.



Listed By:  
Jack Chivers Realty

Affinity Real Estate Inc. participates in the Regional Multiple Listing Service of Minnesota, Inc Broker Reciprocity (sm) program, allowing us to display other broker's listings on our website. All properties are subject to prior sale, change or withdrawal.



Call Affinity Real Estate

**218-237-3333**

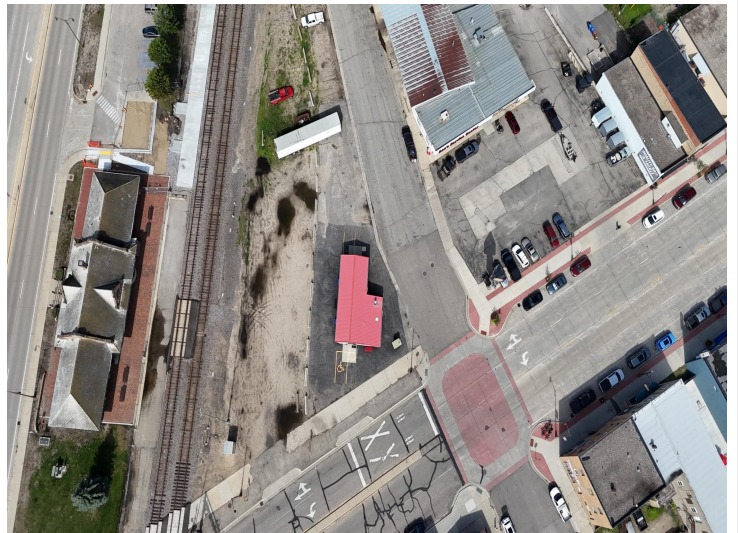
[info@affinityrealestate.com](mailto:info@affinityrealestate.com)

MLS



Affinity Real Estate - 600 Park Avenue South - Park Rapids MN 56470





website: [www.AffinityRealEstate.com](http://www.AffinityRealEstate.com) | email: [info@affinityrealestate.com](mailto:info@affinityrealestate.com) | office: 218-237-3333 | fax: 218-237-3377



**\$315,000**  
 MLS 6766841 Commercial  
 600 Washington Avenue  
 Detroit Lakes MN 56501





website: [www.AffinityRealEstate.com](http://www.AffinityRealEstate.com) | email: [info@affinityrealestate.com](mailto:info@affinityrealestate.com) | office: 218-237-3333 | fax: 218-237-3377

**Affinity**  
REAL ESTATE INC

**\$315,000**  
MLS 6766841 Commercial  
600 Washington Avenue  
Detroit Lakes MN 56501





website: [www.AffinityRealEstate.com](http://www.AffinityRealEstate.com) | email: [info@affinityrealestate.com](mailto:info@affinityrealestate.com) | office: 218-237-3333 | fax: 218-237-3377



**\$315,000**  
 MLS 6766841 Commercial  
 600 Washington Avenue  
 Detroit Lakes MN 56501





website: [www.AffinityRealEstate.com](http://www.AffinityRealEstate.com) | email: [info@affinityrealestate.com](mailto:info@affinityrealestate.com) | office: 218-237-3333 | fax: 218-237-3377



**\$315,000**  
 MLS 6766841 Commercial  
 600 Washington Avenue  
 Detroit Lakes MN 56501