



MLS 6767324 Land

\$49,999

1 Acres
Raw Land

32840 County Highway 1
Richville MN 56576

Status: Active

Description:

Lying just north of Ottertail Lake, this one acre lot is ready for your plans. Whether it be a new home, a cabin, or a place to store all your lake toys, this lot has been cleared, nicely leveled and ready to go. Electric and cable is on sight for easy hookup.

Additional Details:

Lot Acres	1
Lot Dimensions	1.0
School District	549
Taxes	\$150
Taxes with Assessments	\$150
Tax Year	2025

Additional Features:

Driving Directions:

from highway 1 north of Ottertail Lake, north on 407th Aven to propertyl.



Listed By:
Centennial Realty

Affinity Real Estate Inc. participates in the Regional Multiple Listing Service of Minnesota, Inc Broker Reciprocity (sm) program, allowing us to display other broker's listings on our website. All properties are subject to prior sale, change or withdrawal.



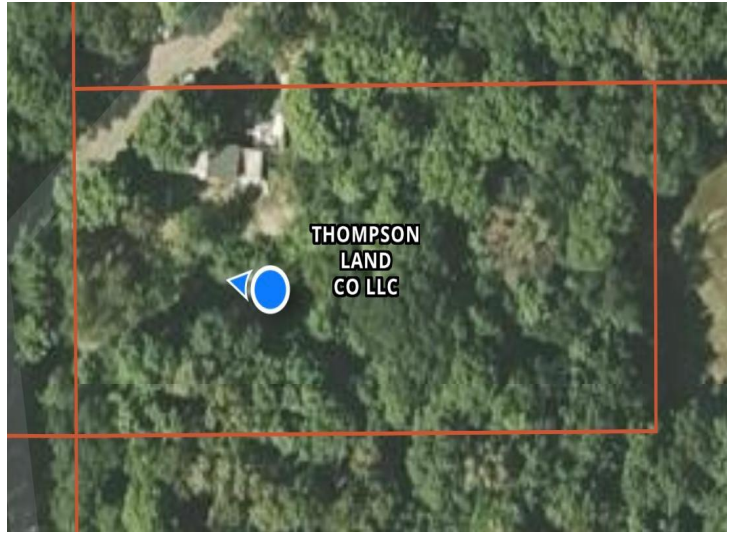
Call Affinity Real Estate

218-237-3333

info@affinityrealestate.com



Affinity Real Estate - 600 Park Avenue South - Park Rapids MN 56470



website: www.AffinityRealEstate.com | email: info@affinityrealestate.com | office: 218-237-3333 | fax: 218-237-3377



\$49,999

MLS 6767324 Land
32840 County Highway 1
Richville MN 56576



website: www.AffinityRealEstate.com | email: info@affinityrealestate.com | office: 218-237-3333 | fax: 218-237-3377



\$49,999

MLS 6767324 Land
32840 County Highway 1
Richville MN 56576



website: www.AffinityRealEstate.com | email: info@affinityrealestate.com | office: 218-237-3333 | fax:218-237-3377



\$49,999

MLS 6767324 Land
32840 County Highway 1
Richville MN 56576