



MLS 6767354 Residential

**\$387,000**

1,411 sq ft  
3 bedrooms  
2 baths

15518 Explorer Circle  
Park Rapids MN 56470

Status: Active

**Description:**

Discover this beautifully crafted home ideally situated with views of the 5th fairway of Headwaters Golf Course. This thoughtfully designed home features 3 spacious bedrooms and 2 baths all on one level. The heart of the home is a custom kitchen, complete with quartz countertops, custom cabinetry, and a layout perfect for entertaining. Enjoy the upscale feel with vinyl plank flooring and Bayer Built doors throughout. Outside a finished attached garage, tar driveway, striking LP siding and elegant stamped concrete create beautiful curb appeal. Relax on your backyard patio while taking in sites of golfers passing by. With final finishing touches nearly complete, this exceptional home is ready to welcome you.

**Additional Details:**

Year Built	2025
Lot Acres	0.69
Lot Dimensions	110x200x130x185
Garage Stalls	2
School District	309
Taxes	\$92
Taxes with Assessments	\$92
Tax Year	2024

**Additional Features:**

**Basement:** None **Fuel:** Electric, Natural Gas **Garage:** 2 **Heat:** Boiler, Ductless Mini-Split, Radiant Floor **Sewer:** Septic System Compliant - Yes, Tank with Drainage Field **Water:** Drilled, Private, Well **Air Conditioning:** Heat Pump

**Driving Directions:**

From Highways 34/71, East on 34 to #1. North on #1 for approximately 1.5 miles to Explorer Circle to 1st house on left.



Listed By:  
Wolff & Simon Real Estate

Affinity Real Estate Inc. participates in the Regional Multiple Listing Service of Minnesota, Inc Broker Reciprocity (sm) program, allowing us to display other broker's listings on our website. All properties are subject to prior sale, change or withdrawal.



**Call Affinity Real Estate**

**218-237-3333**

**info@affinityrealestate.com**



**Affinity Real Estate - 600 Park Avenue South - Park Rapids MN 56470**



website: [www.AffinityRealEstate.com](http://www.AffinityRealEstate.com) | email: [info@affinityrealestate.com](mailto:info@affinityrealestate.com) | office: 218-237-3333 | fax: 218-237-3377



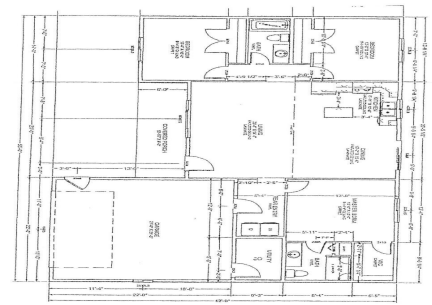
**\$387,000**  
 MLS 6767354 Residential  
 15518 Explorer Circle  
 Park Rapids MN 56470



website: [www.AffinityRealEstate.com](http://www.AffinityRealEstate.com) | email: [info@affinityrealestate.com](mailto:info@affinityrealestate.com) | office: 218-237-3333 | fax: 218-237-3377



**\$387,000**  
MLS 6767354 Residential  
15518 Explorer Circle  
Park Rapids MN 56470



website: [www.AffinityRealEstate.com](http://www.AffinityRealEstate.com) | email: [info@affinityrealestate.com](mailto:info@affinityrealestate.com) | office: 218-237-3333 | fax: 218-237-3377



**\$387,000**  
 MLS 6767354 Residential  
 15518 Explorer Circle  
 Park Rapids MN 56470