



MLS 6767455 Residential

**\$4,999,500**

10,400 sq ft  
10 bedrooms  
8 baths

18040 150th Street  
Park Rapids MN 56470

Status: Pending

#### Description:

Welcome to Wooters Point. This special property is one of the most iconic and admired properties to ever grace the shores of highly sought-after Long Lake. This once-in-a-lifetime offering spans an incredible 45 acres with a mind blowing 2,100+ feet of pristine, sandy shoreline. The swimming beach is amazing, and the point will take your breath away. It provides the ultimate treasure trove that could only be expected from a property of this caliber. From its rich history to all of the tangibles and its vast natural resources, its all here! Enjoy scenic walking trails, abundant wildlife and excellent hunting opportunities. Includes 3 well-appointed homes, a guest cabin, storage buildings, tennis/pickleball court, softball field, fenced garden area, boat launch, lakeside gas fill, a spring fed pond and so much more! This incredibly cared for estate is unmatched in beauty, privacy and endless possibilities. It is simply the unicorn no one believed existed! Videos and specific details on each structure are available upon request.

#### Additional Details:

Year Built	1971
Lot Acres	44.82
Lot Dimensions	2130 x 1100 x 1320 x 575
Garage Stalls	7
School District	1384
Taxes	\$30,191
Taxes with Assessments	\$31,074
Tax Year	2025

#### Additional Features:

**Basement:** Block, Other **Fuel:** Array **Garage:** 7 **Heat:** Forced Air, Fireplace(s) **Sewer:** Other, Private Sewer, Shared Septic, Tank with Drainage Field **Water:** Drilled, Sand Point **Air Conditioning:** Central Air

#### Driving Directions:

From Park Rapids: Take Hwy 34 East to a right on CR 20. Proceed to a right on 150th St and follow to property at the end of the road. Gated entry.



Listed By:  
Affinity Real Estate Inc.

Affinity Real Estate Inc. participates in the Regional Multiple Listing Service of Minnesota, Inc Broker Reciprocity (sm) program, allowing us to display other broker's listings on our website. All properties are subject to prior sale, change or withdrawal.



Call Affinity Real Estate

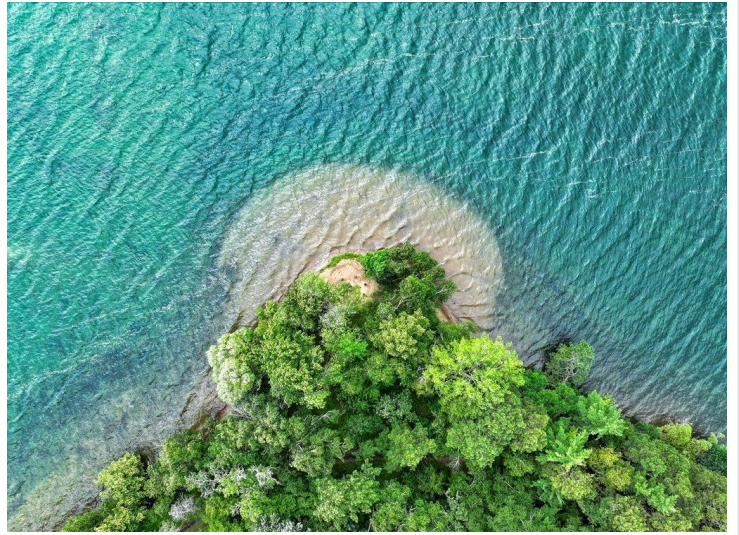
**218-237-3333**

[info@affinityrealestate.com](mailto:info@affinityrealestate.com)



Affinity Real Estate - 600 Park Avenue South - Park Rapids MN 56470





website: [www.AffinityRealEstate.com](http://www.AffinityRealEstate.com) | email: [info@affinityrealestate.com](mailto:info@affinityrealestate.com) | office: 218-237-3333 | fax: 218-237-3377



**\$4,999,500**

MLS 6767455 Residential  
18040 150th Street  
Park Rapids MN 56470





website: [www.AffinityRealEstate.com](http://www.AffinityRealEstate.com) | email: [info@affinityrealestate.com](mailto:info@affinityrealestate.com) | office: 218-237-3333 | fax: 218-237-3377



**\$4,999,500**

MLS 6767455 Residential  
18040 150th Street  
Park Rapids MN 56470





website: [www.AffinityRealEstate.com](http://www.AffinityRealEstate.com) | email: [info@affinityrealestate.com](mailto:info@affinityrealestate.com) | office: 218-237-3333 | fax: 218-237-3377



**\$4,999,500**

MLS 6767455 Residential  
18040 150th Street  
Park Rapids MN 56470





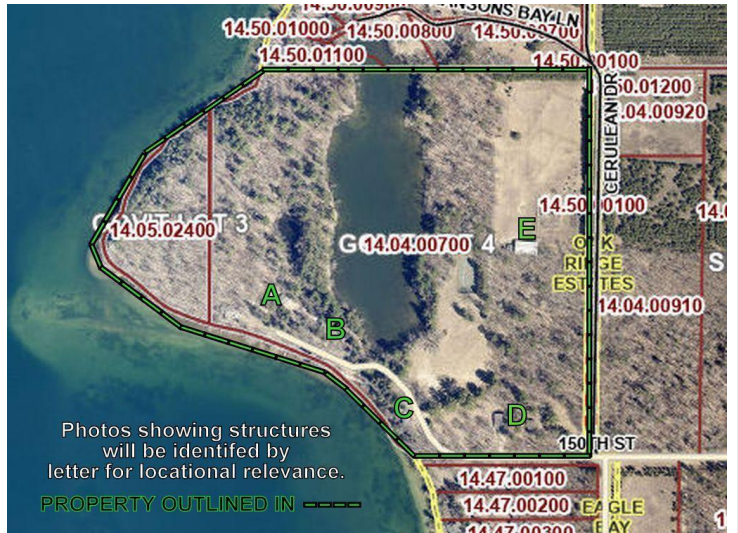
website: [www.AffinityRealEstate.com](http://www.AffinityRealEstate.com) | email: [info@affinityrealestate.com](mailto:info@affinityrealestate.com) | office: 218-237-3333 | fax: 218-237-3377



**\$4,999,500**

MLS 6767455 Residential  
18040 150th Street  
Park Rapids MN 56470





website: [www.AffinityRealEstate.com](http://www.AffinityRealEstate.com) | email: [info@affinityrealestate.com](mailto:info@affinityrealestate.com) | office: 218-237-3333 | fax: 218-237-3377

**Affinity**  
REAL ESTATE INC

**\$4,999,500**

MLS 6767455 Residential  
18040 150th Street  
Park Rapids MN 56470



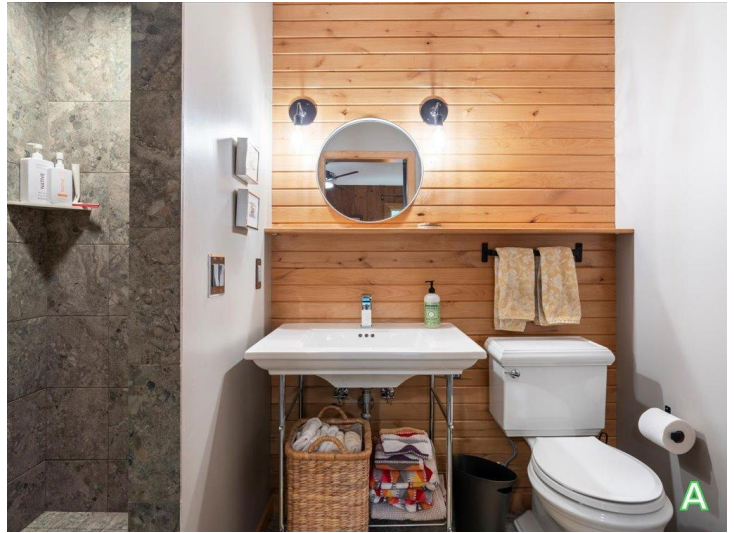


website: [www.AffinityRealEstate.com](http://www.AffinityRealEstate.com) | email: [info@affinityrealestate.com](mailto:info@affinityrealestate.com) | office: 218-237-3333 | fax: 218-237-3377

**Affinity**  
REAL ESTATE INC

**\$4,999,500**  
MLS 6767455 Residential  
18040 150th Street  
Park Rapids MN 56470





website: [www.AffinityRealEstate.com](http://www.AffinityRealEstate.com) | email: [info@affinityrealestate.com](mailto:info@affinityrealestate.com) | office: 218-237-3333 | fax: 218-237-3377

**Affinity**  
REAL ESTATE INC

**\$4,999,500**  
MLS 6767455 Residential  
18040 150th Street  
Park Rapids MN 56470





website: [www.AffinityRealEstate.com](http://www.AffinityRealEstate.com) | email: [info@affinityrealestate.com](mailto:info@affinityrealestate.com) | office: 218-237-3333 | fax: 218-237-3377

**Affinity**  
REAL ESTATE INC

**\$4,999,500**

MLS 6767455 Residential  
18040 150th Street  
Park Rapids MN 56470





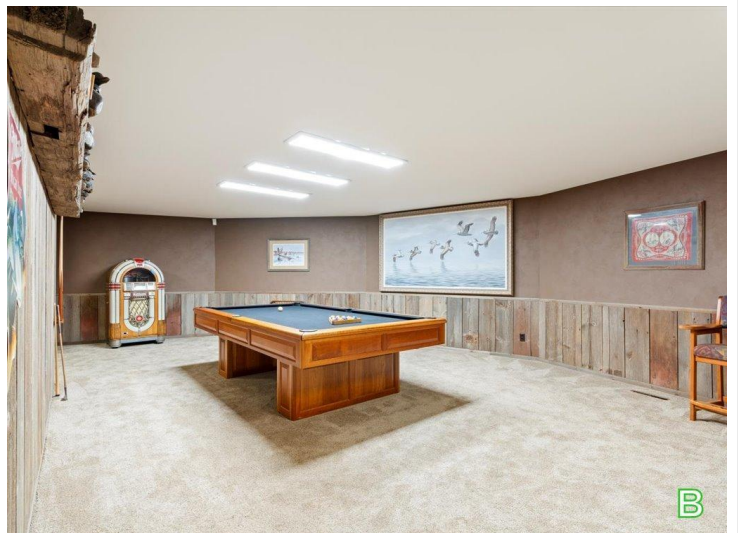
website: [www.AffinityRealEstate.com](http://www.AffinityRealEstate.com) | email: [info@affinityrealestate.com](mailto:info@affinityrealestate.com) | office: 218-237-3333 | fax: 218-237-3377

**Affinity**  
REAL ESTATE INC

**\$4,999,500**

MLS 6767455 Residential  
18040 150th Street  
Park Rapids MN 56470





website: [www.AffinityRealEstate.com](http://www.AffinityRealEstate.com) | email: [info@affinityrealestate.com](mailto:info@affinityrealestate.com) | office: 218-237-3333 | fax: 218-237-3377

**Affinity**  
REAL ESTATE INC

**\$4,999,500**

MLS 6767455 Residential  
18040 150th Street  
Park Rapids MN 56470





website: [www.AffinityRealEstate.com](http://www.AffinityRealEstate.com) | email: [info@affinityrealestate.com](mailto:info@affinityrealestate.com) | office: 218-237-3333 | fax: 218-237-3377

**Affinity**  
REAL ESTATE INC

**\$4,999,500**  
MLS 6767455 Residential  
18040 150th Street  
Park Rapids MN 56470





website: [www.AffinityRealEstate.com](http://www.AffinityRealEstate.com) | email: [info@affinityrealestate.com](mailto:info@affinityrealestate.com) | office: 218-237-3333 | fax: 218-237-3377

**Affinity**  
REAL ESTATE INC

**\$4,999,500**  
MLS 6767455 Residential  
18040 150th Street  
Park Rapids MN 56470





website: [www.AffinityRealEstate.com](http://www.AffinityRealEstate.com) | email: [info@affinityrealestate.com](mailto:info@affinityrealestate.com) | office: 218-237-3333 | fax: 218-237-3377



**\$4,999,500**  
 MLS 6767455 Residential  
 18040 150th Street  
 Park Rapids MN 56470