



MLS 6767506 Land

\$279,900

50.65 Acres
Raw Land

7998 Headquarters Drive
Longville MN 56655

Status: Hold

Description:

If you are looking for your own piece of privacy on beautiful Leech Lake, "Muskie Capital of the World," you have found the right place. This 50+ acre property with over 1000+ feet of shoreline on Headquarters DR NE has endless potential. The seller has used the property previously for hunting and fishing over the years, and now it can be your own paradise! 20 minutes from Longville amenities, enjoy access to world-class fishing, boating, and year-round recreation. Hurry, now's your chance to own privacy on famous Leech Lake!

Additional Details:

Lot Acres	50.65
Lot Dimensions	1700x2347
School District	734
Taxes	\$610
Taxes with Assessments	\$610
Tax Year	2025

Additional Features:

Driving Directions:

From Longville, head North on CR-8 NE(MN-84), in 6.8 miles turn left onto Forest Service Road 3100, in 2.6 miles the destination is on the right and arrive at 7998 Headquarters DR NE.



Listed By:
Kurilla Real Estate LTD

Affinity Real Estate Inc. participates in the Regional Multiple Listing Service of Minnesota, Inc Broker Reciprocity (sm) program, allowing us to display other broker's listings on our website. All properties are subject to prior sale, change or withdrawal.



Call Affinity Real Estate

218-237-3333

info@affinityrealestate.com



Affinity Real Estate - 600 Park Avenue South - Park Rapids MN 56470

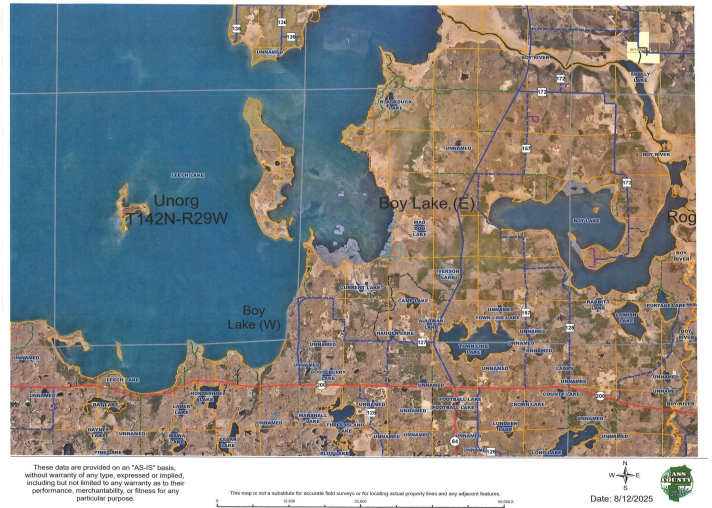
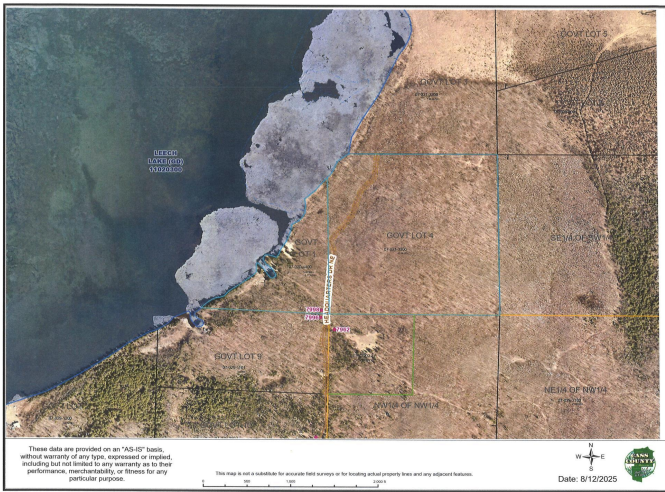


website: www.AffinityRealEstate.com | email: info@affinityrealestate.com | office: 218-237-3333 | fax: 218-237-3377



\$279,900

MLS 6767506 Land
7998 Headquarters Drive
Longville MN 56655



website: www.AffinityRealEstate.com | email: info@affinityrealestate.com | office: 218-237-3333 | fax: 218-237-3377



\$279,900
 MLS 6767506 Land
 7998 Headquarters Drive
 Longville MN 56655