



MLS 6768003 Lake Home

\$624,900

2,592 sq ft
3 bedrooms
2 baths

21771 County Road 30
Crosby MN 56441

Waterfront: Rabbit Lake

Status: Active

Description:

Welcome to this delightful home situated in the picturesque Cuyuna Range, just steps from the serene shores of Rabbit Lake. This property is perfect for outdoor enthusiasts, offering direct access to bike and ATV trails for year-round adventure. The spacious layout features abundant natural light and includes a detached garage with living quarters above, perfect for guests or a creative studio. Embrace the tranquility of lakeside living and the vibrant outdoor lifestyle this exceptional location has to offer. Don't miss the chance to make this charming residence your own!

Additional Details:

Year Built	1971
Lot Acres	1.3
Lot Dimensions	471.57 x 187.81 x 210.07 x 129.68 x 255.79 x 76.19
Garage Stalls	4
School District	182
Taxes	\$2,402
Taxes with Assessments	\$2,402
Tax Year	2024

Additional Features:

Basement: Finished **Fuel:** Electric, Wood **Garage:** 4 **Heat:** Baseboard, Fireplace(s) **Sewer:** Septic System Compliant - Yes, Tank with Drainage Field **Water:** Well **Air Conditioning:** Wall Unit(s)

Driving Directions:

From Crosby head north on State Highway 6 for 4 miles. Turn right onto County Rd 30 and the destination will be less than a half mile on the right.



Listed By:
Coldwell Banker Crown Realtors

Affinity Real Estate Inc. participates in the Regional Multiple Listing Service of Minnesota, Inc Broker Reciprocity (sm) program, allowing us to display other broker's listings on our website. All properties are subject to prior sale, change or withdrawal.



Call Affinity Real Estate

218-237-3333

info@affinityrealestate.com



Affinity Real Estate - 600 Park Avenue South - Park Rapids MN 56470



website: www.AffinityRealEstate.com | email: info@affinityrealestate.com | office: 218-237-3333 | fax: 218-237-3377

Affinity
REAL ESTATE INC

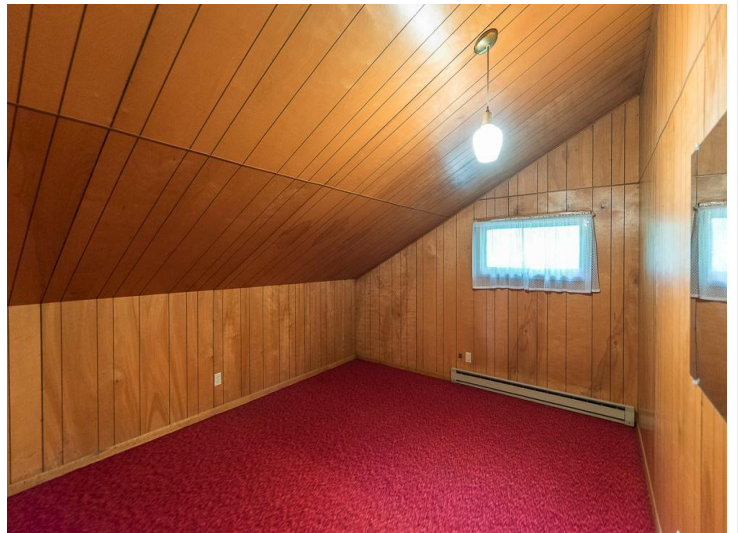
\$624,900
MLS 6768003 Lake Home
21771 County Road 30
Crosby MN 56441



website: www.AffinityRealEstate.com | email: info@affinityrealestate.com | office: 218-237-3333 | fax: 218-237-3377



\$624,900
 MLS 6768003 Lake Home
 21771 County Road 30
 Crosby MN 56441



website: www.AffinityRealEstate.com | email: info@affinityrealestate.com | office: 218-237-3333 | fax: 218-237-3377

Affinity
REAL ESTATE INC

\$624,900
MLS 6768003 Lake Home
21771 County Road 30
Crosby MN 56441



website: www.AffinityRealEstate.com | email: info@affinityrealestate.com | office: 218-237-3333 | fax: 218-237-3377

Affinity
REAL ESTATE INC

\$624,900

MLS 6768003 Lake Home
21771 County Road 30
Crosby MN 56441



website: www.AffinityRealEstate.com | email: info@affinityrealestate.com | office: 218-237-3333 | fax: 218-237-3377



\$624,900
 MLS 6768003 Lake Home
 21771 County Road 30
 Crosby MN 56441



website: www.AffinityRealEstate.com | email: info@affinityrealestate.com | office: 218-237-3333 | fax: 218-237-3377



\$624,900
 MLS 6768003 Lake Home
 21771 County Road 30
 Crosby MN 56441

website: www.AffinityRealEstate.com | email: info@affinityrealestate.com | office: 218-237-3333 | fax:218-237-3377



\$624,900

MLS 6768003 Lake Home
21771 County Road 30
Crosby MN 56441

website: www.AffinityRealEstate.com | email: info@affinityrealestate.com | office: 218-237-3333 | fax: 218-237-3377



\$624,900

MLS 6768003 Lake Home
21771 County Road 30
Crosby MN 56441

website: www.AffinityRealEstate.com | email: info@affinityrealestate.com | office: 218-237-3333 | fax:218-237-3377



\$624,900

MLS 6768003 Lake Home
21771 County Road 30
Crosby MN 56441

website: www.AffinityRealEstate.com | email: info@affinityrealestate.com | office: 218-237-3333 | fax:218-237-3377



\$624,900

MLS 6768003 Lake Home
21771 County Road 30
Crosby MN 56441