



MLS 6768065 Residential

**\$229,900**

1,182 sq ft  
2 bedrooms  
2 baths

1210 Long Avenue  
Detroit Lakes MN 56501

Status: Active

**Description:**

Welcome to your new home! This beautifully maintained 2-bedroom, 2-bathroom condo offers the perfect blend of comfort, convenience, and style. Located in a desirable community, this unit features an expansive covered patio—perfect for relaxing, entertaining, or enjoying your morning coffee rain or shine. Inside, you'll find two spacious bedrooms with ample closet space and two bathrooms. The open concept living and dining area is filled with natural light, creating an inviting atmosphere for everyday living or hosting guests. The updated kitchen includes stainless steel appliances, and plenty of cabinet space for all your culinary needs. Additional features include in-unit laundry, new wall A/C, and a designated 2 car garage. Conveniently situated near shopping, restaurants, parks, and easy access to US Highway 10, making commuting a breeze. Whether you're a first-time buyer or downsizing, this condo has it all. Don't miss this opportunity—schedule your private showing today!

**Additional Details:**

Year Built	1988
Lot Acres	0.09
Lot Dimensions	.09 Acres
Garage Stalls	2
School District	22
Taxes	\$1,376
Taxes with Assessments	\$1,376
Tax Year	2025

**Additional Features:**

**Fuel:** Electric **Heat:** Baseboard

**Driving Directions:**

From US Hwy 10 head south on Jackson Ave, follow curve to the left then continue straight onto Long Ave. Follow curve to the right to address. Brick building on the corner, upper back left unit.



Listed By:  
eXp Realty

Affinity Real Estate Inc. participates in the Regional Multiple Listing Service of Minnesota, Inc Broker Reciprocity (sm) program, allowing us to display other broker's listings on our website. All properties are subject to prior sale, change or withdrawal.



**Call Affinity Real Estate**

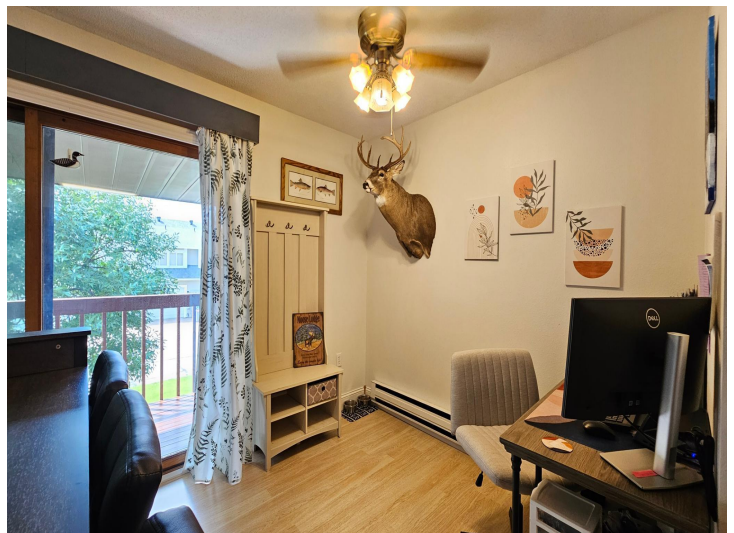
**218-237-3333**

**info@affinityrealestate.com**



**Affinity Real Estate - 600 Park Avenue South - Park Rapids MN 56470**





website: [www.AffinityRealEstate.com](http://www.AffinityRealEstate.com) | email: [info@affinityrealestate.com](mailto:info@affinityrealestate.com) | office: 218-237-3333 | fax: 218-237-3377

**Affinity**  
REAL ESTATE INC

**\$229,900**  
MLS 6768065 Residential  
1210 Long Avenue  
Detroit Lakes MN 56501





website: [www.AffinityRealEstate.com](http://www.AffinityRealEstate.com) | email: [info@affinityrealestate.com](mailto:info@affinityrealestate.com) | office: 218-237-3333 | fax: 218-237-3377

**Affinity**  
REAL ESTATE INC

**\$229,900**  
MLS 6768065 Residential  
1210 Long Avenue  
Detroit Lakes MN 56501





website: [www.AffinityRealEstate.com](http://www.AffinityRealEstate.com) | email: [info@affinityrealestate.com](mailto:info@affinityrealestate.com) | office: 218-237-3333 | fax: 218-237-3377

**Affinity**  
REAL ESTATE INC

**\$229,900**  
MLS 6768065 Residential  
1210 Long Avenue  
Detroit Lakes MN 56501



website: [www.AffinityRealEstate.com](http://www.AffinityRealEstate.com) | email: [info@affinityrealestate.com](mailto:info@affinityrealestate.com) | office: 218-237-3333 | fax:218-237-3377



**\$229,900**  
MLS 6768065 Residential  
1210 Long Avenue  
Detroit Lakes MN 56501