



MLS 6768147 Lake Home

**\$434,500**

2,128 sq ft  
2 bedrooms  
1 baths

3803 Cornflower Court  
Bemidji MN 56601

Waterfront: Wolf Lake (Frohn Twp.)

Status: Active

#### Description:

Welcome to your private retreat on the coveted Cass Lake Chain! This year-round, single-level home on Cornflower Court is nestled on nearly 4 wooded acres with over 100 feet of hard, sandy-bottom shoreline on beautiful Wolf Lake. Tucked just outside of Bemidji, Wolf Lake offers quiet serenity while still connecting you to the full recreation and boating access of the Cass Lake Chain—perfect for anglers, paddlers, and lake lovers alike!

This property offers space, privacy, and potential. You'll appreciate the oversized double garage with a lean-to for storing all your lake toys, boats, and campers. With steel siding and a steel roof, this home is built to last. Inside, the kitchen boasts newly installed hickory cabinetry, setting the stage for more updates and finishes throughout. Two bedrooms were recently opened up with the intention of creating a game room—so whether you need 3 bedrooms again or crave an open layout for entertaining, the flexibility is all yours.

Yes, some projects are in progress—waiting for your personal finishing touch. But the home is fully livable, and the seller currently resides here, proving its cozy, functional charm. The real magic? Step onto the large lakeside deck just off the expansive dining room—an ideal place for morning coffee or evening sunset dinners. The living room is equally generous, offering space to relax, gather, or redesign.

If you're looking for a property on the Cass Lake Chain, you already know how rare this opportunity is. This is your chance to create the ultimate lake escape or year-round home in a truly special location. Bring your ideas, your imagination, and make this Northwoods gem your own. Come see what life on Wolf Lake has to offer—you won't want to leave.

#### Additional Details:

Year Built	1952
Lot Acres	3.88
Lot Dimensions	1444x115x1435x120
Garage Stalls	4
School District	31
Taxes	\$2,840

1	ents	\$2,840
1	Listed By:	Headwater Realty Services LLC

Affinity Real Estate Inc. participates in the Regional Multiple Listing Service of Minnesota, Inc Broker Reciprocity (sm) program, allowing  
**Additional Features:**  
Basement: Full Kitchen, Living Room, Dining Room, Bath, and more!  
Garage: 4 stalls, full kitchen, living room, dining room, and more!  
Heat: All properties have heat.  
Sewer: Private sewer system.  
subject to prior sale, change or withdrawal.

#### Driving Directions:

Roosevelt to Highway 100 to right on Cornflower



Call Affinity Real Estate

**218-237-3333**

[info@affinityrealestate.com](mailto:info@affinityrealestate.com)

MLS R None

Affinity Real Estate - 600 Park Avenue South - Park Rapids MN 56470



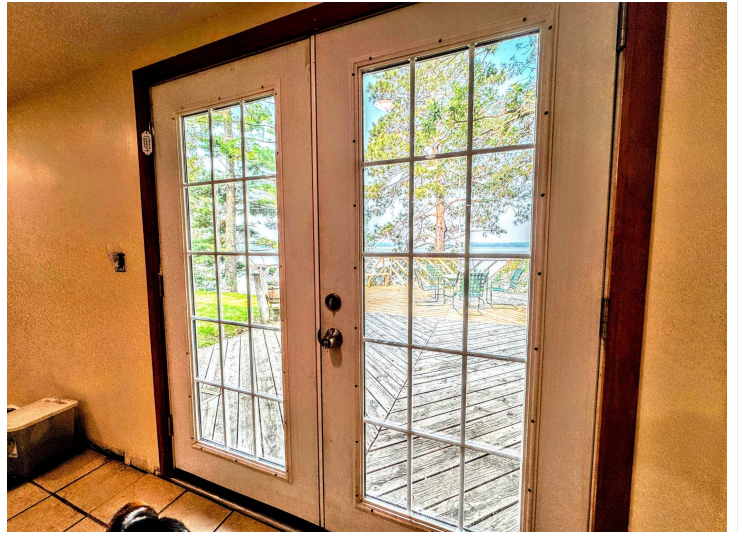


website: [www.AffinityRealEstate.com](http://www.AffinityRealEstate.com) | email: [info@affinityrealestate.com](mailto:info@affinityrealestate.com) | office: 218-237-3333 | fax: 218-237-3377

**Affinity**  
REAL ESTATE INC

**\$434,500**  
MLS 6768147 Lake Home  
3803 Cornflower Court  
Bemidji MN 56601





website: [www.AffinityRealEstate.com](http://www.AffinityRealEstate.com) | email: [info@affinityrealestate.com](mailto:info@affinityrealestate.com) | office: 218-237-3333 | fax: 218-237-3377

**Affinity**  
REAL ESTATE INC

**\$434,500**  
MLS 6768147 Lake Home  
3803 Cornflower Court  
Bemidji MN 56601





website: [www.AffinityRealEstate.com](http://www.AffinityRealEstate.com) | email: [info@affinityrealestate.com](mailto:info@affinityrealestate.com) | office: 218-237-3333 | fax: 218-237-3377

**Affinity**  
REAL ESTATE INC

**\$434,500**  
MLS 6768147 Lake Home  
3803 Cornflower Court  
Bemidji MN 56601





website: [www.AffinityRealEstate.com](http://www.AffinityRealEstate.com) | email: [info@affinityrealestate.com](mailto:info@affinityrealestate.com) | office: 218-237-3333 | fax: 218-237-3377



**\$434,500**  
 MLS 6768147 Lake Home  
 3803 Cornflower Court  
 Bemidji MN 56601



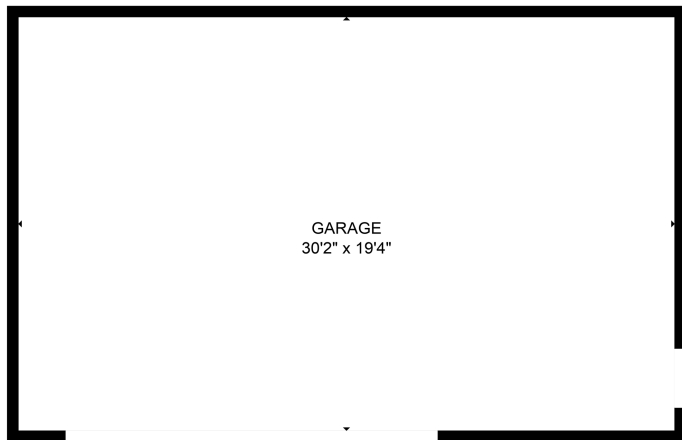


website: [www.AffinityRealEstate.com](http://www.AffinityRealEstate.com) | email: [info@affinityrealestate.com](mailto:info@affinityrealestate.com) | office: 218-237-3333 | fax: 218-237-3377

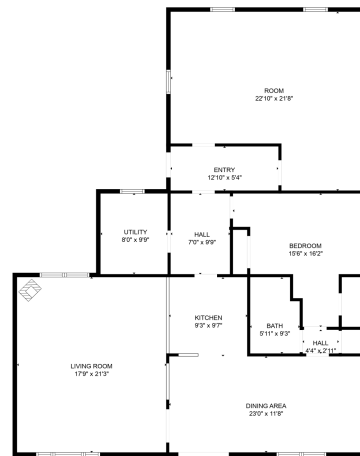
**Affinity**  
REAL ESTATE INC

**\$434,500**  
MLS 6768147 Lake Home  
3803 Cornflower Court  
Bemidji MN 56601

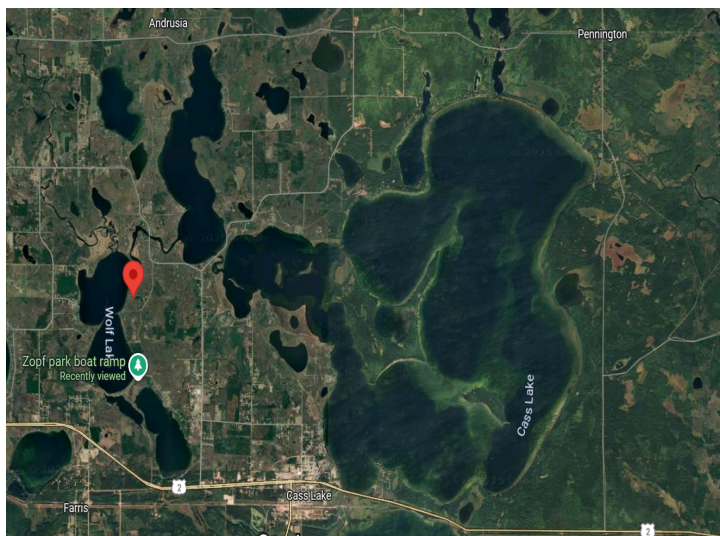




FLOOR PLAN CREATED BY CUBICASA APP. MEASUREMENTS DEEMED HIGHLY RELIABLE BUT NOT GUARANTEED.



FLOOR PLAN CREATED BY CUBICASA APP. MEASUREMENTS DEEMED HIGHLY RELIABLE BUT NOT GUARANTEED.



website: [www.AffinityRealEstate.com](http://www.AffinityRealEstate.com) | email: [info@affinityrealestate.com](mailto:info@affinityrealestate.com) | office: 218-237-3333 | fax: 218-237-3377



**\$434,500**  
 MLS 6768147 Lake Home  
 3803 Cornflower Court  
 Bemidji MN 56601