



MLS 6768447 Residential

\$339,000

2,143 sq ft
4 bedrooms
2 baths

2131 Graydon Avenue
Brainerd MN 56401

Status: Coming Soon

Description:

This wonderful home is situated on a corner lot with mature trees! Next to a park, close to medical facilities and easy access to Hwy 371. 4 BR (3 on main floor), 2 bath home with laundry on the main floor! Multiple living areas including a front living room w/ oak floors, spacious sunroom w/ gas fireplace and a family room downstairs. Plenty of storage and a shop room downstairs. Move right in as it's freshly painted inside and suggestions fixed from the pre-listing inspection. You'll enjoy hanging out on the newly painted deck with shade from the trees. There are beautiful perennials throughout the yard, a patio area with firepit and cement pad next to the garage. The attached 2-stall garage includes a separate area with its own door to the backyard. Looking for a shop? The 2nd garage features a Grizzly dust collector in the heated shop and is 2 separate areas. This truly is a must see, well-cared for home that's ready to rock 'n roll for the new owners!

Additional Details:

Year Built	1968
Lot Acres	0.37
Lot Dimensions	118x139x114x140
Garage Stalls	4
School District	181
Taxes	\$2,928
Taxes with Assessments	\$2,928
Tax Year	2025

Additional Features:

Fuel: Natural Gas **Heat:** Forced Air, Fireplace(s)

Driving Directions:

Heading south on Business 371 (South 6th St), take a right on Buffalo Hills Lane. Right on Graydon..property is on the corner of Graydon & Buffalo Hills.



Listed By:
LPT Realty, LLC

Affinity Real Estate Inc. participates in the Regional Multiple Listing Service of Minnesota, Inc Broker Reciprocity (sm) program, allowing us to display other broker's listings on our website. All properties are subject to prior sale, change or withdrawal.



Call Affinity Real Estate

218-237-3333

info@affinityrealestate.com



Affinity Real Estate - 600 Park Avenue South - Park Rapids MN 56470



website: www.AffinityRealEstate.com | email: info@affinityrealestate.com | office: 218-237-3333 | fax: 218-237-3377



\$339,000
 MLS 6768447 Residential
 2131 Graydon Avenue
 Brainerd MN 56401



website: www.AffinityRealEstate.com | email: info@affinityrealestate.com | office: 218-237-3333 | fax: 218-237-3377

Affinity
REAL ESTATE INC

\$339,000
MLS 6768447 Residential
2131 Graydon Avenue
Brainerd MN 56401



website: www.AffinityRealEstate.com | email: info@affinityrealestate.com | office: 218-237-3333 | fax: 218-237-3377

Affinity
REAL ESTATE INC

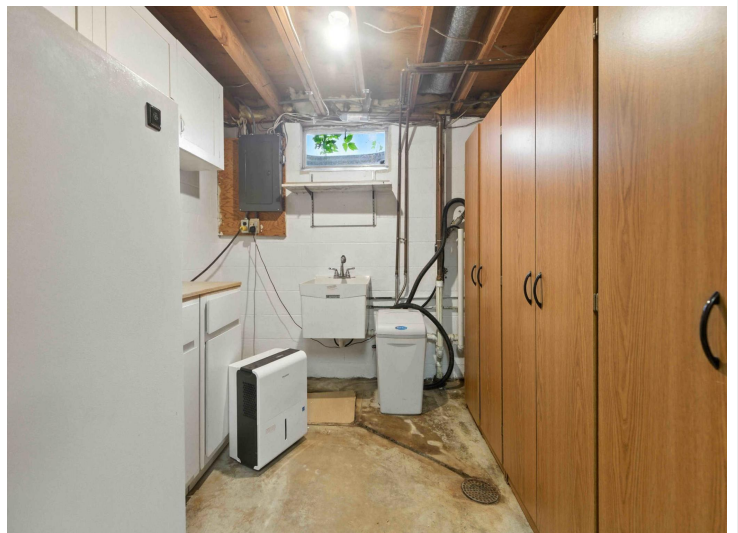
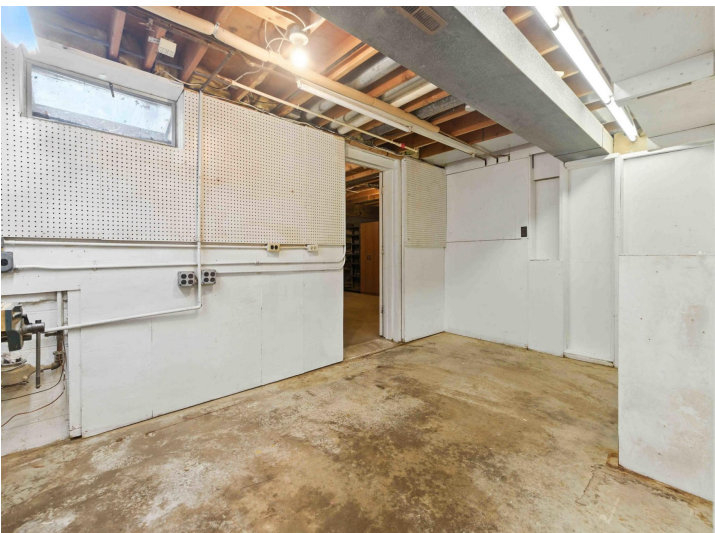
\$339,000
MLS 6768447 Residential
2131 Graydon Avenue
Brainerd MN 56401



website: www.AffinityRealEstate.com | email: info@affinityrealestate.com | office: 218-237-3333 | fax: 218-237-3377



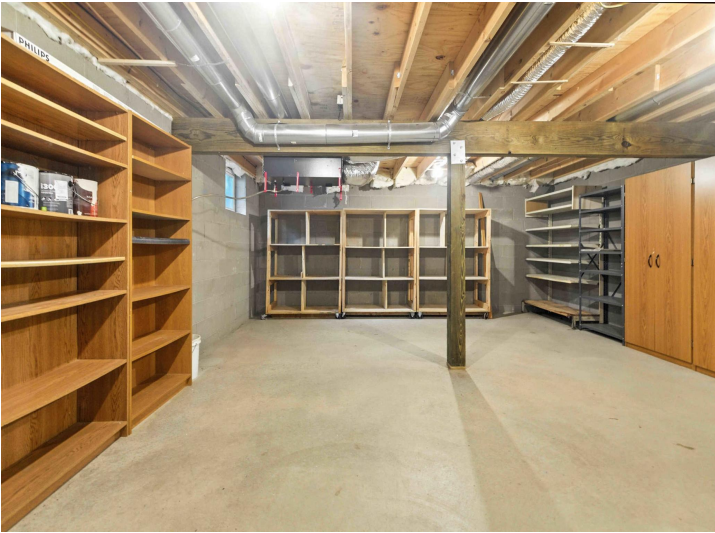
\$339,000
MLS 6768447 Residential
2131 Graydon Avenue
Brainerd MN 56401



website: www.AffinityRealEstate.com | email: info@affinityrealestate.com | office: 218-237-3333 | fax: 218-237-3377



\$339,000
 MLS 6768447 Residential
 2131 Graydon Avenue
 Brainerd MN 56401



website: www.AffinityRealEstate.com | email: info@affinityrealestate.com | office: 218-237-3333 | fax: 218-237-3377



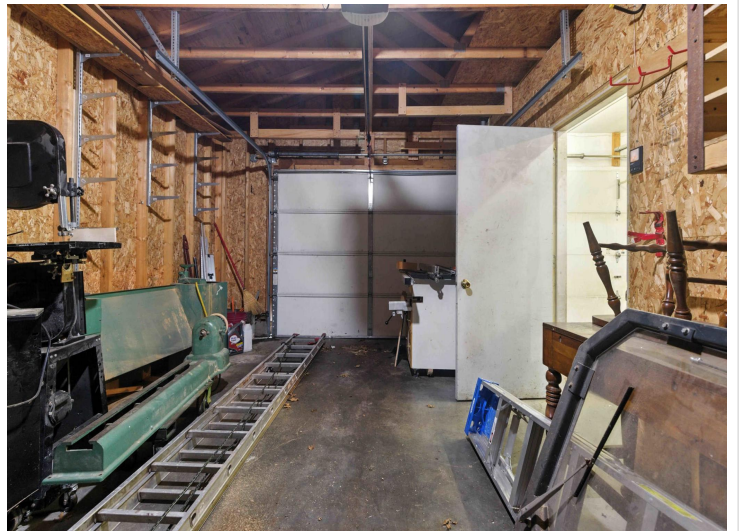
\$339,000
MLS 6768447 Residential
2131 Graydon Avenue
Brainerd MN 56401



website: www.AffinityRealEstate.com | email: info@affinityrealestate.com | office: 218-237-3333 | fax: 218-237-3377

Affinity
REAL ESTATE INC

\$339,000
MLS 6768447 Residential
2131 Graydon Avenue
Brainerd MN 56401



website: www.AffinityRealEstate.com | email: info@affinityrealestate.com | office: 218-237-3333 | fax: 218-237-3377



\$339,000
MLS 6768447 Residential
2131 Graydon Avenue
Brainerd MN 56401



website: www.AffinityRealEstate.com | email: info@affinityrealestate.com | office: 218-237-3333 | fax: 218-237-3377



\$339,000
 MLS 6768447 Residential
 2131 Graydon Avenue
 Brainerd MN 56401