



MLS 6768467 Land

\$115,000

20.1 Acres

Raw Land

parcel 1 Hwy 87
Backus MN 56435

Status: Pending

Description:

Discover the potential of this 20-acre parcel located just south of Backus, offering a prime mix of open field and wooded acreage. With a new survey already completed, this property is ready for your plans—whether you're looking to build, recreate, or invest in northern Minnesota land. The blend of field and woods provides excellent habitat for deer, turkey, and other wildlife, making this an ideal setup for hunting or creating a private outdoor retreat. Enjoy easy year-round access right off the highway, just minutes from Backus and the surrounding lakes area. Whether you're dreaming of a cabin in the woods, hobby farming, or simply a peaceful getaway, this versatile property offers space, privacy, and opportunity in the heart of lake country. Additional adjoining land also available.

Additional Details:

Lot Acres	20.1
Lot Dimensions	663x1320
School District	2174
Taxes	\$194
Taxes with Assessments	\$194
Tax Year	2025

Additional Features:

Driving Directions:

1.3 miles south of downtown Backus on Hwy 87, just before 90 degree curve to West on left side.



Listed By:
Gallery of Homes

Affinity Real Estate Inc. participates in the Regional Multiple Listing Service of Minnesota, Inc Broker Reciprocity (sm) program, allowing us to display other broker's listings on our website. All properties are subject to prior sale, change or withdrawal.



Call Affinity Real Estate

218-237-3333

info@affinityrealestate.com



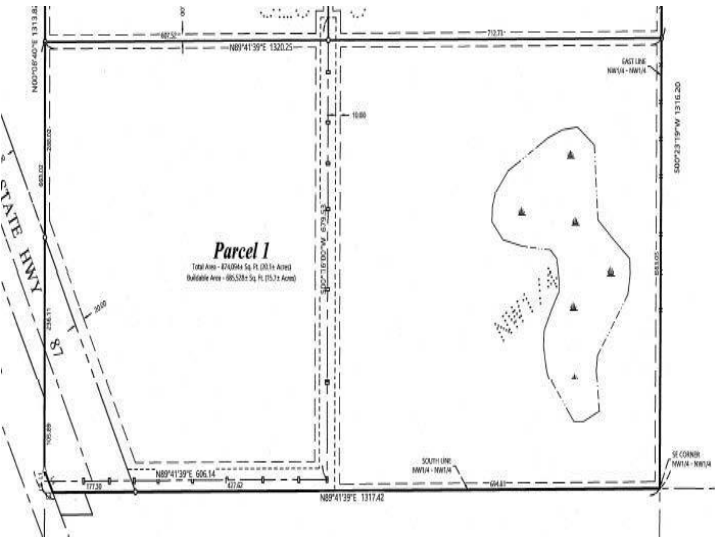
Affinity Real Estate - 600 Park Avenue South - Park Rapids MN 56470



website: www.AffinityRealEstate.com | email: info@affinityrealestate.com | office: 218-237-3333 | fax: 218-237-3377



\$115,000
MLS 6768467 Land
parcel 1 Hwy 87
Backus MN 56435



website: www.AffinityRealEstate.com | email: info@affinityrealestate.com | office: 218-237-3333 | fax: 218-237-3377



\$115,000
MLS 6768467 Land
parcel 1 Hwy 87
Backus MN 56435