



MLS 6768628 Commercial

\$950,000

1608 Industry Avenue
Park Rapids MN 56470

Status: Active

Description:

This expansive industrial building in Park Rapids sits within city limits on 7.83 acres, offering over 18,000 sq. ft. of fully heated and completely finished interior space. The structure is topped with a durable metal roof and features soaring 16' ceilings throughout the main open area, creating endless possibilities for a wide range of business ventures. The shop area is fully equipped with 3-phase power thoughtfully placed throughout, multiple air compressor hose connections, and 11 overhead doors each 14' in height. A car lift is also included, adding valuable functionality for automotive or equipment-related operations. At the roadside entrance, you'll find a welcoming open entry, a large private office, and a break room. The property provides ample parking and sits in a well-established industrial park, ensuring excellent visibility and recognition. With its size, features, and location, this property is truly a one-of-a-kind opportunity ready to support your business vision.

Additional Details:

| | |
|------------------------|-----------|
| Year Built | 1991 |
| Lot Acres | 7.83 |
| Lot Dimensions | Irregular |
| Garage Stalls | 11 |
| School District | 309 |
| Taxes | \$10,766 |
| Taxes with Assessments | \$13,876 |
| Tax Year | 2025 |

Additional Features:

Basement: None **Fuel:** Natural Gas **Garage:** 11 **Heat:** Forced Air, Hot Water **Sewer:** City Sewer/Connected **Water:** City Water/Connected **Air Conditioning:** Central Air

Driving Directions:

From Park Rapids, go south on Hwy 71. Take a right onto Industrial Park Road then a left onto Industry Ave. The property is on the left.



Listed By:
Keller Williams Realty Professionals

Affinity Real Estate Inc. participates in the Regional Multiple Listing Service of Minnesota, Inc Broker Reciprocity (sm) program, allowing us to display other broker's listings on our website. All properties are subject to prior sale, change or withdrawal.



Call Affinity Real Estate

218-237-3333

info@affinityrealestate.com



Affinity Real Estate - 600 Park Avenue South - Park Rapids MN 56470



website: www.AffinityRealEstate.com | email: info@affinityrealestate.com | office: 218-237-3333 | fax: 218-237-3377



\$950,000
 MLS 6768628 Commercial
 1608 Industry Avenue
 Park Rapids MN 56470



website: www.AffinityRealEstate.com | email: info@affinityrealestate.com | office: 218-237-3333 | fax: 218-237-3377



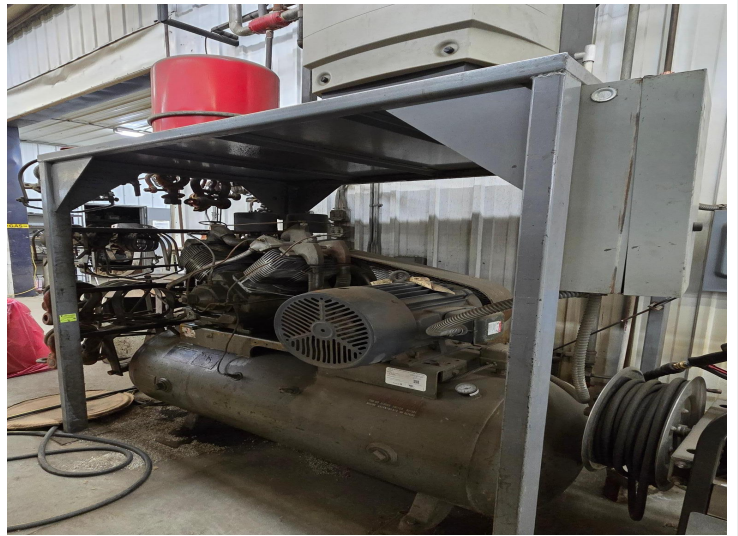
\$950,000
 MLS 6768628 Commercial
 1608 Industry Avenue
 Park Rapids MN 56470



website: www.AffinityRealEstate.com | email: info@affinityrealestate.com | office: 218-237-3333 | fax: 218-237-3377



\$950,000
MLS 6768628 Commercial
1608 Industry Avenue
Park Rapids MN 56470



website: www.AffinityRealEstate.com | email: info@affinityrealestate.com | office: 218-237-3333 | fax: 218-237-3377



\$950,000
 MLS 6768628 Commercial
 1608 Industry Avenue
 Park Rapids MN 56470



website: www.AffinityRealEstate.com | email: info@affinityrealestate.com | office: 218-237-3333 | fax: 218-237-3377

Affinity
REAL ESTATE INC

\$950,000
MLS 6768628 Commercial
1608 Industry Avenue
Park Rapids MN 56470



website: www.AffinityRealEstate.com | email: info@affinityrealestate.com | office: 218-237-3333 | fax: 218-237-3377



\$950,000
 MLS 6768628 Commercial
 1608 Industry Avenue
 Park Rapids MN 56470