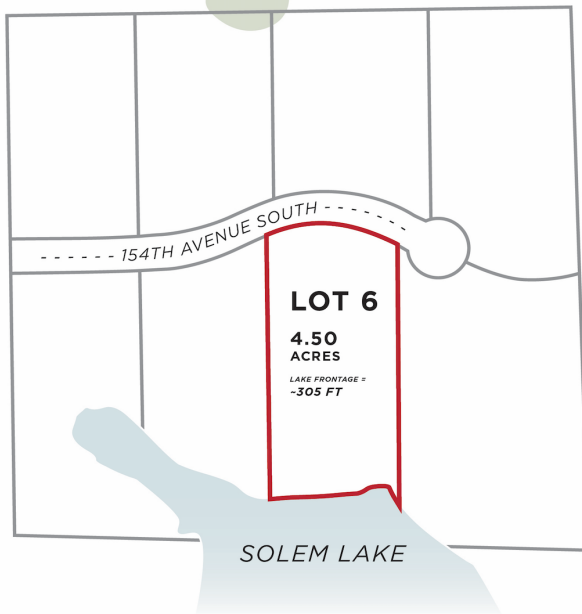




MLS 6769183 Lake Land

\$190,000



Description:

Solem Hills Lot #6. Take a walk up to the highest lot in the subdivision & soak in the incredible views. You have rolling hills, trees & a lake on 4.5 acres with 305' of lake frontage. 35 minutes to FM, 15 minutes to Pelican Rapids & 10 minutes to Barnesville. No assessments!

Additional Details:

Lot Acres	4.5
Lot Dimensions	Irregular
School District	146
Taxes	\$250
Taxes with Assessments	\$250
Tax Year	2025

Additional Features:

Driving Directions:

North side of HWY 34 off 260th



Listed By:
RE/MAX Legacy Realty

Affinity Real Estate Inc. participates in the Regional Multiple Listing Service of Minnesota, Inc Broker Reciprocity (sm) program, allowing us to display other broker's listings on our website. All properties are subject to prior sale, change or withdrawal.



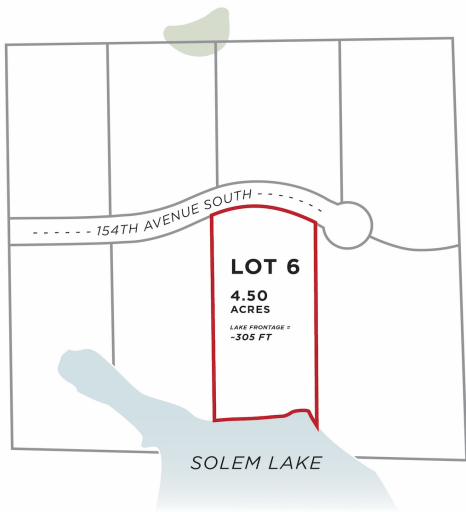
Call Affinity Real Estate

218-237-3333

info@affinityrealestate.com



Affinity Real Estate - 600 Park Avenue South - Park Rapids MN 56470



MINNESOTA REALTORS



website: www.AffinityRealEstate.com | email: info@affinityrealestate.com | office: 218-237-3333 | fax: 218-237-3377



\$190,000
MLS 6769183 Lake Land
26147 154 Avenue
Barnesville MN 56514



website: www.AffinityRealEstate.com | email: info@affinityrealestate.com | office: 218-237-3333 | fax:218-237-3377



\$190,000
MLS 6769183 Lake Land
26147 154 Avenue
Barnesville MN 56514



website: www.AffinityRealEstate.com | email: info@affinityrealestate.com | office: 218-237-3333 | fax:218-237-3377

Affinity
REAL ESTATE INC

\$190,000
MLS 6769183 Lake Land
26147 154 Avenue
Barnesville MN 56514



website: www.AffinityRealEstate.com | email: info@affinityrealestate.com | office: 218-237-3333 | fax:218-237-3377

Affinity
REAL ESTATE INC

\$190,000
MLS 6769183 Lake Land
26147 154 Avenue
Barnesville MN 56514



website: www.AffinityRealEstate.com | email: info@affinityrealestate.com | office: 218-237-3333 | fax:218-237-3377



\$190,000
MLS 6769183 Lake Land
26147 154 Avenue
Barnesville MN 56514



website: www.AffinityRealEstate.com | email: info@affinityrealestate.com | office: 218-237-3333 | fax:218-237-3377



\$190,000
MLS 6769183 Lake Land
26147 154 Avenue
Barnesville MN 56514