



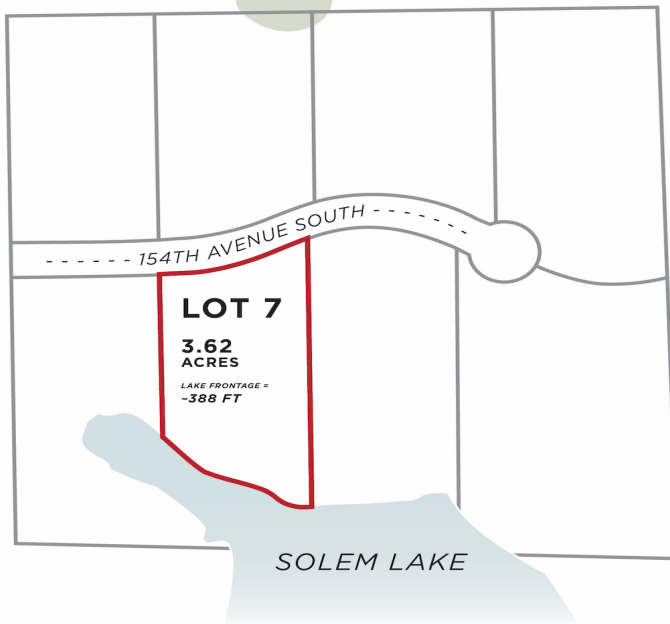
MLS 6769185 Land

\$140,000

3.62 Acres
Subdivided

26085 154 Avenue
Barnesville MN 56514

Status: Active



Description:

Solem Hills Lot #7. Enjoy not only the views from the 3.62 acres, but also the 288' of lake frontage. Walk the lot & take it all in. Ready to build & no assessments. 35 minutes from FM, 15 minutes from Pelican Rapids & 10 minutes from Barnesville.

Additional Details:

Lot Acres	3.62
Lot Dimensions	Irregular
School District	812
Taxes	\$198
Taxes with Assessments	\$198
Tax Year	2025

Additional Features:

Driving Directions:

North side of HWY 34 off 260th



Listed By:
RE/MAX Legacy Realty

Affinity Real Estate Inc. participates in the Regional Multiple Listing Service of Minnesota, Inc Broker Reciprocity (sm) program, allowing us to display other broker's listings on our website. All properties are subject to prior sale, change or withdrawal.



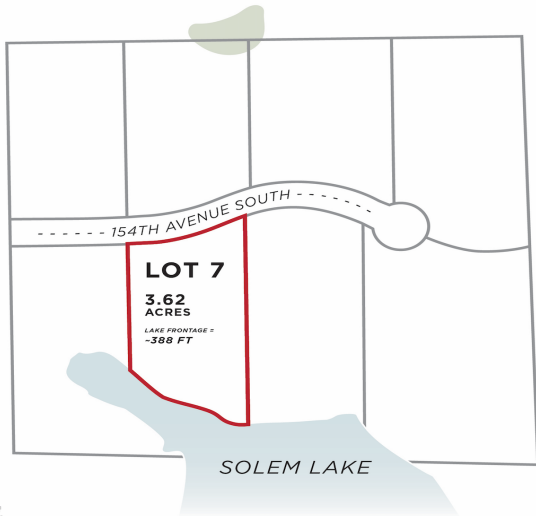
Call Affinity Real Estate

218-237-3333

info@affinityrealestate.com



Affinity Real Estate - 600 Park Avenue South - Park Rapids MN 56470



website: www.AffinityRealEstate.com | email: info@affinityrealestate.com | office: 218-237-3333 | fax: 218-237-3377

Affinity
REAL ESTATE INC

\$140,000
MLS 6769185 Land
26085 154 Avenue
Barnesville MN 56514