



MLS 6769188 Lake Land

\$145,000



Description:

Solem Hills Lot #8. Let's get your dream home built on this beautiful 4.23 acre lot with 614' of lake frontage. The views are endless & you will fall in love with the peace & quiet. 35 minutes to FM, 15 minutes to Pelican Rapids & 10 minutes to Barnesville. No assessments!!

Additional Details:

Lot Acres	4.23
Lot Dimensions	Irregular
School District	146
Taxes	\$982
Taxes with Assessments	\$982
Tax Year	2025

Additional Features:

Driving Directions:

North side of HWY 34 off 260th



Listed By:
RE/MAX Legacy Realty

Affinity Real Estate Inc. participates in the Regional Multiple Listing Service of Minnesota, Inc Broker Reciprocity (sm) program, allowing us to display other broker's listings on our website. All properties are subject to prior sale, change or withdrawal.



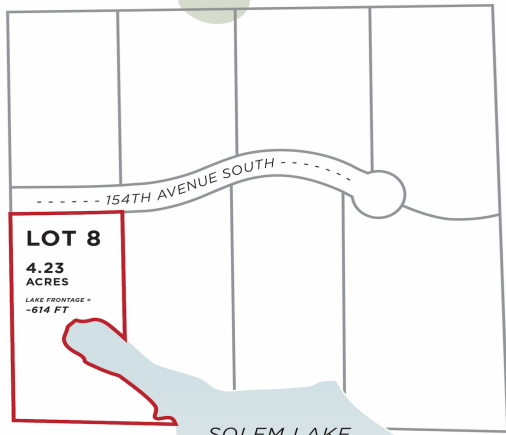
Call Affinity Real Estate

218-237-3333

info@affinityrealestate.com



Affinity Real Estate - 600 Park Avenue South - Park Rapids MN 56470



website: www.AffinityRealEstate.com | email: info@affinityrealestate.com | office: 218-237-3333 | fax: 218-237-3377



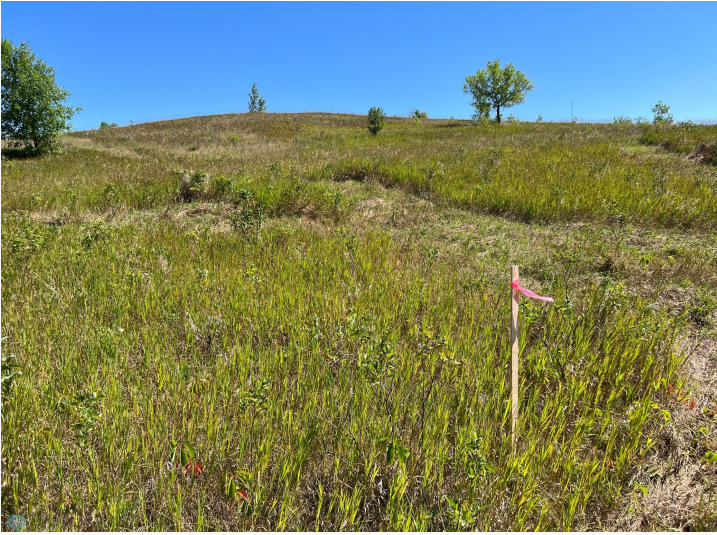
\$145,000
MLS 6769188 Lake Land
26029 154 Avenue
Barnesville MN 56514



website: www.AffinityRealEstate.com | email: info@affinityrealestate.com | office: 218-237-3333 | fax:218-237-3377

Affinity
REAL ESTATE INC

\$145,000
MLS 6769188 Lake Land
26029 154 Avenue
Barnesville MN 56514



website: www.AffinityRealEstate.com | email: info@affinityrealestate.com | office: 218-237-3333 | fax:218-237-3377



\$145,000
MLS 6769188 Lake Land
26029 154 Avenue
Barnesville MN 56514



website: www.AffinityRealEstate.com | email: info@affinityrealestate.com | office: 218-237-3333 | fax: 218-237-3377

Affinity
REAL ESTATE INC

\$145,000
MLS 6769188 Lake Land
26029 154 Avenue
Barnesville MN 56514



website: www.AffinityRealEstate.com | email: info@affinityrealestate.com | office: 218-237-3333 | fax:218-237-3377



\$145,000
MLS 6769188 Lake Land
26029 154 Avenue
Barnesville MN 56514