



MLS 6769348 Residential

**\$479,900**

4,269 sq ft  
4 bedrooms  
4 baths

31548 County Highway 75  
Wadena MN 56482

Status: Active

**Description:**

Amazingly designed and constructed large rural home. 4 bedroom 4 bath home on 7.27 acres with amazing 28 x 40 shop with 16' sidewalls, insulated and heated built in 2022. Recently new siding and Anderson windows. Beautiful slate flooring, open spiral staircase, magnificent parquet ceilings are just some of the perks of this home.

**Additional Details:**

Year Built	1977
Lot Acres	7.27
Lot Dimensions	489' x 646' x 489' x 647'
Garage Stalls	2
School District	2155
Taxes	\$3,382
Taxes with Assessments	\$3,382
Tax Year	2025

**Additional Features:**

**Basement:** Block, Partial, Concrete, Sump Pump **Fuel:** Oil **Garage:** 2 **Heat:** Forced Air **Sewer:** Mound Septic, Private Sewer, Septic System Compliant - Yes **Water:** Private, Sand Point **Air Conditioning:** Central Air

**Driving Directions:**

From Wadena west on 29 turn south on county 75, 3 miles south to property



Listed By:  
Hinkle Realty

Affinity Real Estate Inc. participates in the Regional Multiple Listing Service of Minnesota, Inc Broker Reciprocity (sm) program, allowing us to display other broker's listings on our website. All properties are subject to prior sale, change or withdrawal.



**Call Affinity Real Estate**

**218-237-3333**

**info@affinityrealestate.com**



**Affinity Real Estate - 600 Park Avenue South - Park Rapids MN 56470**





website: [www.AffinityRealEstate.com](http://www.AffinityRealEstate.com) | email: [info@affinityrealestate.com](mailto:info@affinityrealestate.com) | office: 218-237-3333 | fax: 218-237-3377



**\$479,900**  
 MLS 6769348 Residential  
 31548 County Highway 75  
 Wadena MN 56482





website: [www.AffinityRealEstate.com](http://www.AffinityRealEstate.com) | email: [info@affinityrealestate.com](mailto:info@affinityrealestate.com) | office: 218-237-3333 | fax: 218-237-3377

**Affinity**  
REAL ESTATE INC

**\$479,900**  
MLS 6769348 Residential  
31548 County Highway 75  
Wadena MN 56482



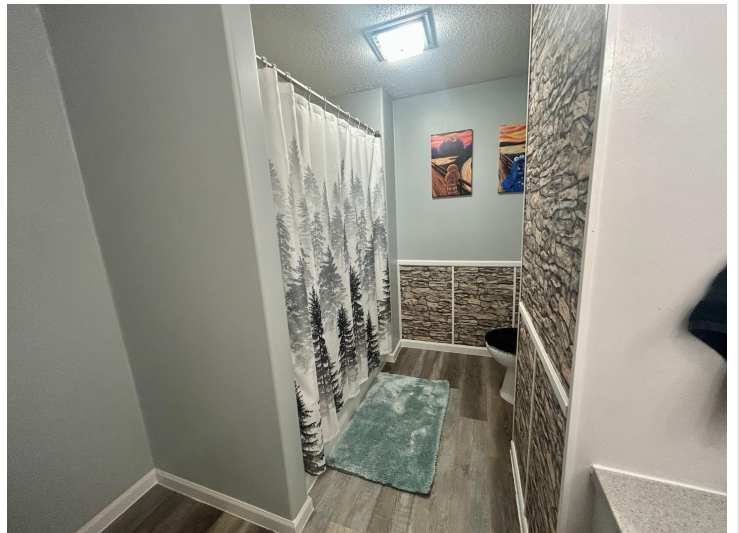


website: [www.AffinityRealEstate.com](http://www.AffinityRealEstate.com) | email: [info@affinityrealestate.com](mailto:info@affinityrealestate.com) | office: 218-237-3333 | fax: 218-237-3377

**Affinity**  
REAL ESTATE INC

**\$479,900**  
MLS 6769348 Residential  
31548 County Highway 75  
Wadena MN 56482





website: [www.AffinityRealEstate.com](http://www.AffinityRealEstate.com) | email: [info@affinityrealestate.com](mailto:info@affinityrealestate.com) | office: 218-237-3333 | fax: 218-237-3377

**Affinity**  
REAL ESTATE INC

**\$479,900**

MLS 6769348 Residential  
31548 County Highway 75  
Wadena MN 56482





website: [www.AffinityRealEstate.com](http://www.AffinityRealEstate.com) | email: [info@affinityrealestate.com](mailto:info@affinityrealestate.com) | office: 218-237-3333 | fax: 218-237-3377

**Affinity**  
REAL ESTATE INC

**\$479,900**  
MLS 6769348 Residential  
31548 County Highway 75  
Wadena MN 56482





website: [www.AffinityRealEstate.com](http://www.AffinityRealEstate.com) | email: [info@affinityrealestate.com](mailto:info@affinityrealestate.com) | office: 218-237-3333 | fax: 218-237-3377



**\$479,900**  
 MLS 6769348 Residential  
 31548 County Highway 75  
 Wadena MN 56482





website: [www.AffinityRealEstate.com](http://www.AffinityRealEstate.com) | email: [info@affinityrealestate.com](mailto:info@affinityrealestate.com) | office: 218-237-3333 | fax: 218-237-3377



**\$479,900**  
MLS 6769348 Residential  
31548 County Highway 75  
Wadena MN 56482