



MLS 6769465 Lake Home

\$379,000

1,523 sq ft
2 bedrooms
1 baths

19543 Grandview Drive
Park Rapids MN 56470

Waterfront: Ida

Status: Active

Description:

Discover your oasis in this charming 2-bedroom, 1-bathroom cabin, perfectly nestled on scenic Lake Ida with over 100 feet of pristine shoreline. Enjoy the tranquility of lakeside living while being just moments away from Big Sand Lake and Loon Lake. This property is also conveniently located near the vibrant town of Dorset, offering a wealth of amenities at your fingertips. The beautifully landscaped yard enhances the natural beauty of the surroundings, while abundant natural light floods the interior. Relax or entertain on the inviting screened porch, Where you can soak in breathtaking lake views amid lush tree coverage. The walk-out basement features efficient in-floor heating and ample storage space, providing both comfort and convenience. Additionally, the 22x24 detached garage, thoughtfully partitioned into guest quarters, offers an ideal space for hosting friends and family. This cabin isn't just a home; it's a serene retreat where you can create lasting memories. Don't miss the opportunity to own this lakeside gem!

Additional Details:

Year Built	2007
Lot Acres	2
Lot Dimensions	108x398x220x376
Garage Stalls	2
School District	309
Taxes	\$2,039
Taxes with Assessments	\$2,260
Tax Year	2025

Additional Features:

Fuel: Electric, Propane, Wood **Heat:** Boiler, Dual, Radiant Floor, Other, Wood Stove

Driving Directions:

From Park Rapids go East on Highway 34 to a left on 226 and go North on 226 (turns into County Road 7) to a left on Grouse Road. Stay on Grouse Road to a left on Grandview and take that to 19543.



Listed By:
Wolff & Simon Real Estate

Affinity Real Estate Inc. participates in the Regional Multiple Listing Service of Minnesota, Inc Broker Reciprocity (sm) program, allowing us to display other broker's listings on our website. All properties are subject to prior sale, change or withdrawal.



Call Affinity Real Estate

218-237-3333

info@affinityrealestate.com



Affinity Real Estate - 600 Park Avenue South - Park Rapids MN 56470



website: www.AffinityRealEstate.com | email: info@affinityrealestate.com | office: 218-237-3333 | fax: 218-237-3377

Affinity
REAL ESTATE INC

\$379,000

MLS 6769465 Lake Home
19543 Grandview Drive
Park Rapids MN 56470



website: www.AffinityRealEstate.com | email: info@affinityrealestate.com | office: 218-237-3333 | fax: 218-237-3377

Affinity
REAL ESTATE INC

\$379,000
MLS 6769465 Lake Home
19543 Grandview Drive
Park Rapids MN 56470



website: www.AffinityRealEstate.com | email: info@affinityrealestate.com | office: 218-237-3333 | fax: 218-237-3377



\$379,000
 MLS 6769465 Lake Home
 19543 Grandview Drive
 Park Rapids MN 56470



website: www.AffinityRealEstate.com | email: info@affinityrealestate.com | office: 218-237-3333 | fax: 218-237-3377



\$379,000

MLS 6769465 Lake Home
19543 Grandview Drive
Park Rapids MN 56470



website: www.AffinityRealEstate.com | email: info@affinityrealestate.com | office: 218-237-3333 | fax: 218-237-3377

Affinity
REAL ESTATE INC

\$379,000
MLS 6769465 Lake Home
19543 Grandview Drive
Park Rapids MN 56470



website: www.AffinityRealEstate.com | email: info@affinityrealestate.com | office: 218-237-3333 | fax: 218-237-3377



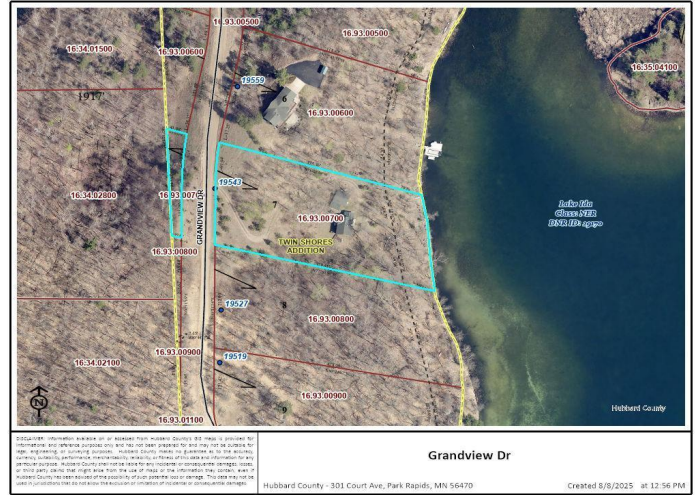
\$379,000
MLS 6769465 Lake Home
19543 Grandview Drive
Park Rapids MN 56470



website: www.AffinityRealEstate.com | email: info@affinityrealestate.com | office: 218-237-3333 | fax: 218-237-3377

Affinity
REAL ESTATE INC

\$379,000
MLS 6769465 Lake Home
19543 Grandview Drive
Park Rapids MN 56470



website: www.AffinityRealEstate.com | email: info@affinityrealestate.com | office: 218-237-3333 | fax: 218-237-3377



\$379,000
 MLS 6769465 Lake Home
 19543 Grandview Drive
 Park Rapids MN 56470