



MLS 6770005 Residential

\$199,900

612 sq ft
3 bedrooms
2 baths

351 Pine Mountain Lake Road
Backus MN 56435

Status: Active

Description:

FULLY FURNISHED 3 bedroom, 2 bathroom cabin on 5.65 acres adjoining 47,000 additional acres of public land within Foothills State Forest coupled with DEEDED ACCESS and room for your own personal dock/lift on beautiful Pine Mountain Lake! Open living and kitchen areas provide a spacious and comfortable layout. 2 bedrooms share a Jack and Jill bathroom, while a private master suite features it's own 3/4 bath. As an added bonus, 2 RV sites each serviced with 30 amp electric provide additional lodging solutions for extended family and friends. With access to the water, thousands of acres of state forest featuring miles of OHV and cross-country trails, and endless year round recreational opportunities, come see why this unique property is truly a sportsman's delight; Schedule your private showing today!

Additional Details:

Year Built	1960
Lot Acres	5.65
Lot Dimensions	860x300x815x300
School District	1065
Taxes	\$606
Taxes with Assessments	\$672
Tax Year	2025

Additional Features:

Fuel: Array **Heat:** Ductless Mini-Split

Driving Directions:

From corner MN-371 and MN-87 in Backus. Follow MN-87 West to Pine Mountain Lake Road NW. Turn Right on to Pine Mountain and follow to 351 on the left hand side. Gated driveway.



Listed By:
Coldwell Banker Realty

Affinity Real Estate Inc. participates in the Regional Multiple Listing Service of Minnesota, Inc Broker Reciprocity (sm) program, allowing us to display other broker's listings on our website. All properties are subject to prior sale, change or withdrawal.



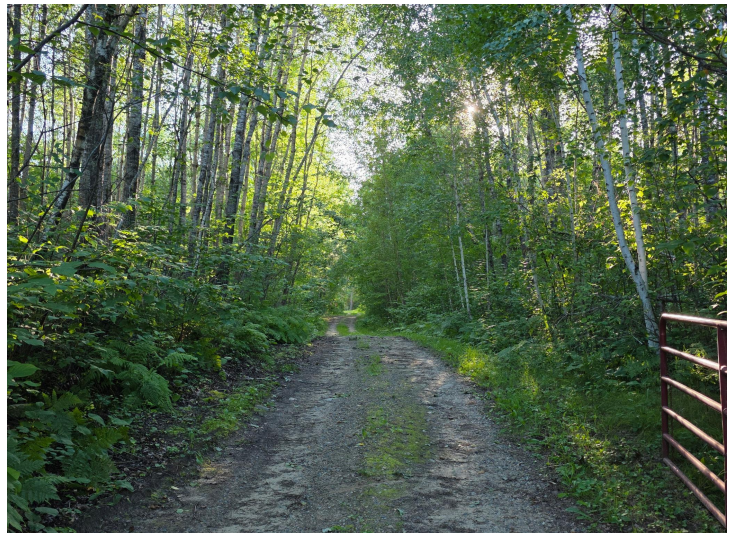
Call Affinity Real Estate

218-237-3333

info@affinityrealestate.com



Affinity Real Estate - 600 Park Avenue South - Park Rapids MN 56470



website: www.AffinityRealEstate.com | email: info@affinityrealestate.com | office: 218-237-3333 | fax: 218-237-3377



\$199,900
MLS 6770005 Residential
351 Pine Mountain Lake
Road
Backus MN 56435



website: www.AffinityRealEstate.com | email: info@affinityrealestate.com | office: 218-237-3333 | fax: 218-237-3377

Affinity
REAL ESTATE INC

\$199,900
MLS 6770005 Residential
351 Pine Mountain Lake
Road
Backus MN 56435



website: www.AffinityRealEstate.com | email: info@affinityrealestate.com | office: 218-237-3333 | fax: 218-237-3377



\$199,900
 MLS 6770005 Residential
 351 Pine Mountain Lake
 Road
 Backus MN 56435



website: www.AffinityRealEstate.com | email: info@affinityrealestate.com | office: 218-237-3333 | fax: 218-237-3377



\$199,900
 MLS 6770005 Residential
 351 Pine Mountain Lake
 Road
 Backus MN 56435



website: www.AffinityRealEstate.com | email: info@affinityrealestate.com | office: 218-237-3333 | fax: 218-237-3377



\$199,900
 MLS 6770005 Residential
 351 Pine Mountain Lake
 Road
 Backus MN 56435