



MLS 6770291 Residential

**\$395,000**

2,012 sq ft  
4 bedrooms  
3 baths

5268 County Road 11  
Pequot Lakes MN 56472

Status: Active

**Description:**

Enjoy the expansive back yard from your patio. Situated next to county land and the fire tower, this 4 bedroom, 2 1/2 bath home offers one level living with two of the bedrooms and a bath in the basement. Main floor laundry, massive attached garage and ample storage in the basement. The entire home has been updated with LVP flooring, remodeled bathrooms, painted walls, new trim and doors. This home is just over a mile away from the elementary and high/middle school. Golf, lakes, resorts, restaurants and Paul Bunyan Trail are all just minutes away.

**Additional Details:**

Year Built	1954
Lot Acres	2.76
Lot Dimensions	TBD
Garage Stalls	4
School District	186
Taxes	\$3,128
Taxes with Assessments	\$3,128
Tax Year	2024

**Additional Features:**

**Basement:** Block, Egress Window(s), Full, Concrete, Partially Finished, Storage Space **Fuel:** Natural Gas **Garage:** 4 **Heat:** Forced Air  
**Sewer:** Private Sewer, Tank with Drainage Field **Water:** Drilled, Private, Well **Air Conditioning:** Central Air

**Driving Directions:**

From Pequot Lakes, head east on County Road 11. After roundabout, go .1 mile to house on the left. Fire #5268.



Listed By:  
Larson Group Real Estate/Kelle

Affinity Real Estate Inc. participates in the Regional Multiple Listing Service of Minnesota, Inc Broker Reciprocity (sm) program, allowing us to display other broker's listings on our website. All properties are subject to prior sale, change or withdrawal.



**Call Affinity Real Estate**

**218-237-3333**

**info@affinityrealestate.com**



**Affinity Real Estate - 600 Park Avenue South - Park Rapids MN 56470**





website: [www.AffinityRealEstate.com](http://www.AffinityRealEstate.com) | email: [info@affinityrealestate.com](mailto:info@affinityrealestate.com) | office: 218-237-3333 | fax: 218-237-3377

**Affinity**  
REAL ESTATE INC

**\$395,000**  
MLS 6770291 Residential  
5268 County Road 11  
Pequot Lakes MN 56472





website: [www.AffinityRealEstate.com](http://www.AffinityRealEstate.com) | email: [info@affinityrealestate.com](mailto:info@affinityrealestate.com) | office: 218-237-3333 | fax: 218-237-3377

**Affinity**  
REAL ESTATE INC

**\$395,000**  
MLS 6770291 Residential  
5268 County Road 11  
Pequot Lakes MN 56472





website: [www.AffinityRealEstate.com](http://www.AffinityRealEstate.com) | email: [info@affinityrealestate.com](mailto:info@affinityrealestate.com) | office: 218-237-3333 | fax: 218-237-3377

**Affinity**  
REAL ESTATE INC

**\$395,000**  
MLS 6770291 Residential  
5268 County Road 11  
Pequot Lakes MN 56472





website: [www.AffinityRealEstate.com](http://www.AffinityRealEstate.com) | email: [info@affinityrealestate.com](mailto:info@affinityrealestate.com) | office: 218-237-3333 | fax: 218-237-3377



**\$395,000**  
 MLS 6770291 Residential  
 5268 County Road 11  
 Pequot Lakes MN 56472



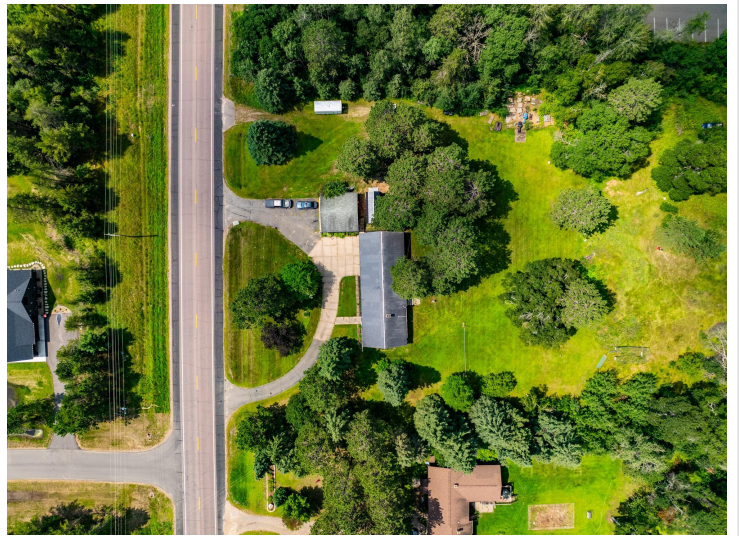


website: [www.AffinityRealEstate.com](http://www.AffinityRealEstate.com) | email: [info@affinityrealestate.com](mailto:info@affinityrealestate.com) | office: 218-237-3333 | fax: 218-237-3377



**\$395,000**  
MLS 6770291 Residential  
5268 County Road 11  
Pequot Lakes MN 56472





website: [www.AffinityRealEstate.com](http://www.AffinityRealEstate.com) | email: [info@affinityrealestate.com](mailto:info@affinityrealestate.com) | office: 218-237-3333 | fax: 218-237-3377



**\$395,000**  
 MLS 6770291 Residential  
 5268 County Road 11  
 Pequot Lakes MN 56472