



MLS 6770534 Lake Home

\$624,900

854 sq ft
2 bedrooms
2 baths

3608 Tolena Road
Alexandria MN 56308

Waterfront: Le Homme Dieu

Status: Active

Description:

Cozy Year-Round Cabin on Lake Le Homme Dieu

Experience the best of Minnesota lake living in this inviting 2-bedroom, 2-bath cabin nestled on the shores of beautiful Lake Le Homme Dieu—part of the highly desirable Alexandria Chain of Lakes. Known for its crystal-clear waters, excellent fishing, and endless recreation, Lake Le Homme Dieu connects you to over 5 lakes in the chain, offering miles of boating, water sports, and scenic cruising. With 48 feet of prime southern-facing shoreline, you'll soak up panoramic views and all-day sunshine right from your own backyard. The remodeled lower level blends modern updates with cozy charm, while the private outdoor patio with firepit invites year-round gatherings. A high-quality dock system is included, giving you easy access to swimming, kayaking, and exploring the entire chain. Located just minutes from Alexandria Golf Club, lakeside dining, and boutique shopping, this property offers both relaxation and convenience—making it an ideal personal retreat or possible investment opportunity.

Additional Details:

Year Built	1960
Lot Acres	0.1
Lot Dimensions	48 93 50 91
School District	206
Taxes	\$3,960
Taxes with Assessments	\$3,960
Tax Year	2025

Additional Features:

Basement: Block, Finished, Walkout **Fuel:** Natural Gas **Heat:** Forced Air **Sewer:** City Sewer/Connected **Water:** City Water - In Street, Sand Point, Well **Air Conditioning:** Central Air, Wall Unit(s)

Driving Directions:

From County Rd 42 head east on Tolena Rd to dead-end. Home is on the right side of the cul-de-sac.



Listed By:
RE/MAX Results

Affinity Real Estate Inc. participates in the Regional Multiple Listing Service of Minnesota, Inc Broker Reciprocity (sm) program, allowing us to display other broker's listings on our website. All properties are subject to prior sale, change or withdrawal.



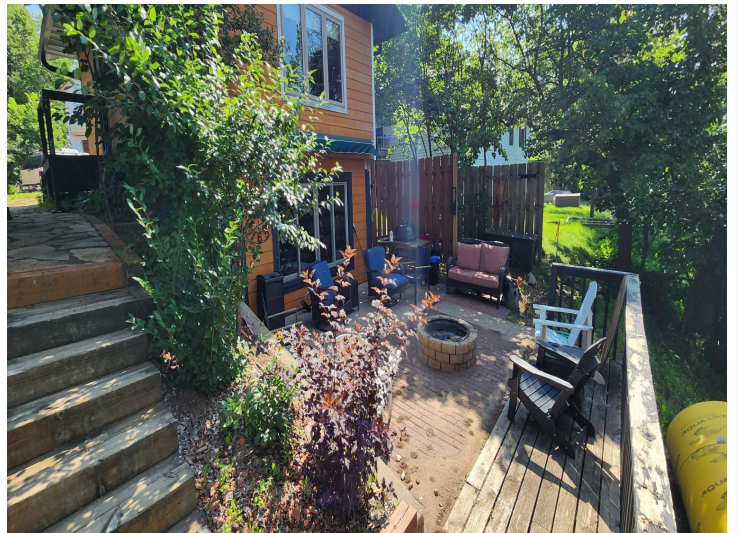
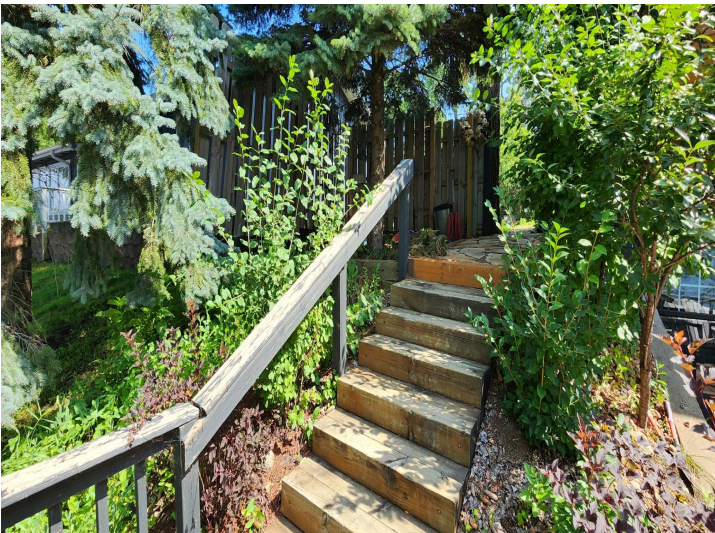
Call Affinity Real Estate

218-237-3333

info@affinityrealestate.com



Affinity Real Estate - 600 Park Avenue South - Park Rapids MN 56470



website: www.AffinityRealEstate.com | email: info@affinityrealestate.com | office: 218-237-3333 | fax: 218-237-3377

Affinity
REAL ESTATE INC

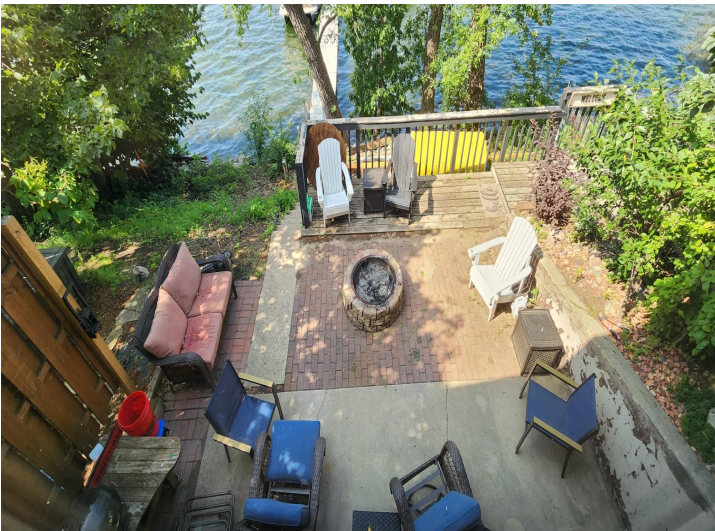
\$624,900
MLS 6770534 Lake Home
3608 Tolena Road
Alexandria MN 56308



website: www.AffinityRealEstate.com | email: info@affinityrealestate.com | office: 218-237-3333 | fax: 218-237-3377

Affinity
REAL ESTATE INC

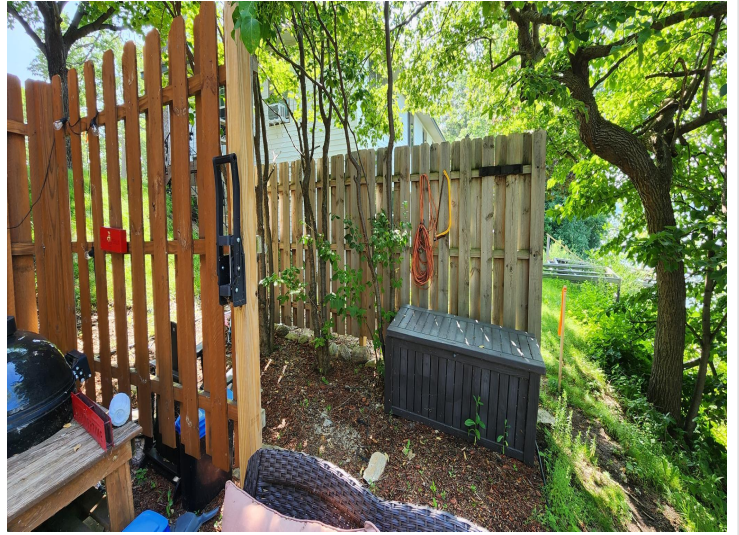
\$624,900
MLS 6770534 Lake Home
3608 Tolena Road
Alexandria MN 56308



website: www.AffinityRealEstate.com | email: info@affinityrealestate.com | office: 218-237-3333 | fax: 218-237-3377

Affinity
REAL ESTATE INC

\$624,900
MLS 6770534 Lake Home
3608 Tolena Road
Alexandria MN 56308



website: www.AffinityRealEstate.com | email: info@affinityrealestate.com | office: 218-237-3333 | fax: 218-237-3377

Affinity
REAL ESTATE INC

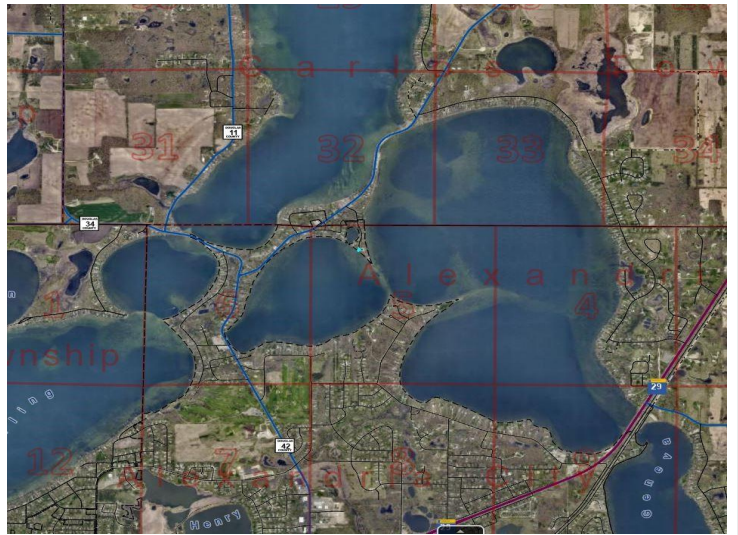
\$624,900
MLS 6770534 Lake Home
3608 Tolena Road
Alexandria MN 56308



website: www.AffinityRealEstate.com | email: info@affinityrealestate.com | office: 218-237-3333 | fax: 218-237-3377

Affinity
REAL ESTATE INC

\$624,900
MLS 6770534 Lake Home
3608 Tolena Road
Alexandria MN 56308



website: www.AffinityRealEstate.com | email: info@affinityrealestate.com | office: 218-237-3333 | fax: 218-237-3377



\$624,900
MLS 6770534 Lake Home
3608 Tolena Road
Alexandria MN 56308