



MLS 6770822 Residential Income

**\$209,900**

**Description:**

Nestled in a prime corner location directly across from Library Park and just steps from Lake Bemidji, this charming multi-family triplex (built around 1900) offers timeless character with original hardwood floors, classic design touches, and bright sun-kissed rooms throughout. Comprised of three units, the upper-level apartment offering spectacular city and lake views, the main-floor unit is large and spacious, and the lower-level unit, this property presents both architectural charm and versatile income potential.

You're within walking distance of downtown shops, delightful lakeside activities, and convenient access to Bemidji State University, perfect for both resident appeal and reliable demand.

Historically, the property has enjoyed excellent occupancy, evidence of its desirability in the Bemidji rental market. Currently, there is one vacant unit that should be filled soon. This turnkey opportunity ensures that rental income is just around the corner.

**Additional Details:**

Year Built	1900
Lot Acres	0.09
Lot Dimensions	63x60x63x60
School District	31
Taxes	\$4,110
Taxes with Assessments	\$4,110
Tax Year	2025

**Additional Features:**

**Basement:** Block, Partial, Concrete, Partially Finished **Fuel:** Natural Gas **Heat:** Forced Air **Sewer:** City Sewer/Connected **Water:** City Water/Connected

**Driving Directions:**

Corner of Bemidji Ave and 6th Street NE, Across from Library Park



Listed By:  
Real Broker, LLC

Affinity Real Estate Inc. participates in the Regional Multiple Listing Service of Minnesota, Inc Broker Reciprocity (sm) program, allowing us to display other broker's listings on our website. All properties are subject to prior sale, change or withdrawal.



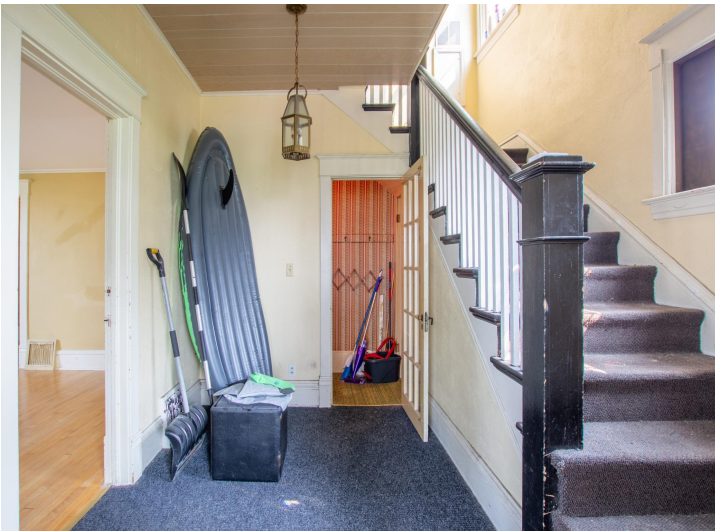
**Call Affinity Real Estate**

**218-237-3333**

**info@affinityrealestate.com**



**Affinity Real Estate - 600 Park Avenue South - Park Rapids MN 56470**



website: [www.AffinityRealEstate.com](http://www.AffinityRealEstate.com) | email: [info@affinityrealestate.com](mailto:info@affinityrealestate.com) | office: 218-237-3333 | fax: 218-237-3377

**Affinity**  
REAL ESTATE INC

**\$209,900**  
MLS 6770822 Residential  
Income  
600 Bemidji Avenue  
Bemidji MN 56601



website: [www.AffinityRealEstate.com](http://www.AffinityRealEstate.com) | email: [info@affinityrealestate.com](mailto:info@affinityrealestate.com) | office: 218-237-3333 | fax: 218-237-3377

**Affinity**  
REAL ESTATE INC

**\$209,900**  
MLS 6770822 Residential  
Income  
600 Bemidji Avenue  
Bemidji MN 56601



website: [www.AffinityRealEstate.com](http://www.AffinityRealEstate.com) | email: [info@affinityrealestate.com](mailto:info@affinityrealestate.com) | office: 218-237-3333 | fax: 218-237-3377

**Affinity**  
REAL ESTATE INC

**\$209,900**  
MLS 6770822 Residential  
Income  
600 Bemidji Avenue  
Bemidji MN 56601



website: [www.AffinityRealEstate.com](http://www.AffinityRealEstate.com) | email: [info@affinityrealestate.com](mailto:info@affinityrealestate.com) | office: 218-237-3333 | fax: 218-237-3377



**\$209,900**  
 MLS 6770822 Residential  
 Income  
 600 Bemidji Avenue  
 Bemidji MN 56601



website: [www.AffinityRealEstate.com](http://www.AffinityRealEstate.com) | email: [info@affinityrealestate.com](mailto:info@affinityrealestate.com) | office: 218-237-3333 | fax: 218-237-3377



**\$209,900**  
MLS 6770822 Residential  
Income  
600 Bemidji Avenue  
Bemidji MN 56601



website: [www.AffinityRealEstate.com](http://www.AffinityRealEstate.com) | email: [info@affinityrealestate.com](mailto:info@affinityrealestate.com) | office: 218-237-3333 | fax: 218-237-3377



**\$209,900**  
 MLS 6770822 Residential  
 Income  
 600 Bemidji Avenue  
 Bemidji MN 56601



website: [www.AffinityRealEstate.com](http://www.AffinityRealEstate.com) | email: [info@affinityrealestate.com](mailto:info@affinityrealestate.com) | office: 218-237-3333 | fax: 218-237-3377

**Affinity**  
REAL ESTATE INC

**\$209,900**  
MLS 6770822 Residential  
Income  
600 Bemidji Avenue  
Bemidji MN 56601



website: [www.AffinityRealEstate.com](http://www.AffinityRealEstate.com) | email: [info@affinityrealestate.com](mailto:info@affinityrealestate.com) | office: 218-237-3333 | fax: 218-237-3377



**\$209,900**  
MLS 6770822 Residential  
Income  
600 Bemidji Avenue  
Bemidji MN 56601

website: [www.AffinityRealEstate.com](http://www.AffinityRealEstate.com) | email: [info@affinityrealestate.com](mailto:info@affinityrealestate.com) | office: 218-237-3333 | fax:218-237-3377



**\$209,900**

MLS 6770822 Residential  
Income  
600 Bemidji Avenue  
Bemidji MN 56601