



MLS 6770962 Residential

\$449,900

2,038 sq ft
3 bedrooms
2 baths

1320 Whiting Road
Bemidji MN 56601

Status: Active



Description:

Prairiewood home with a bonus room above the garage! This 2,038 square foot home has 3 bedrooms and 2 bathrooms, a finished and insulated three-stall attached garage, an asphalt driveway, an open kitchen/dining/living, a primary suite with walk-in closet and double vanity. Prairiewood features 70 acres of common wooded and open grounds that include miles of mowed walking trails, groomed cross-country ski trails, overflow parking, and a playground.

Additional Details:

Year Built	2025
Lot Acres	0.43
Lot Dimensions	111x170
Garage Stalls	3
School District	31
Taxes	\$202
Taxes with Assessments	\$202
Tax Year	2025

Additional Features:

Basement: None **Fuel:** Natural Gas **Garage:** 3 **Heat:** Forced Air **Sewer:** Private Sewer **Water:** Private **Air Conditioning:** Central Air

Driving Directions:

From Walgreens, north on Irvine Ave to a left on Whiting Rd NW. Take a left at 1320 and continue to #57 on the right.



Listed By:
Realty Experts, LLC

Affinity Real Estate Inc. participates in the Regional Multiple Listing Service of Minnesota, Inc Broker Reciprocity (sm) program, allowing us to display other broker's listings on our website. All properties are subject to prior sale, change or withdrawal.



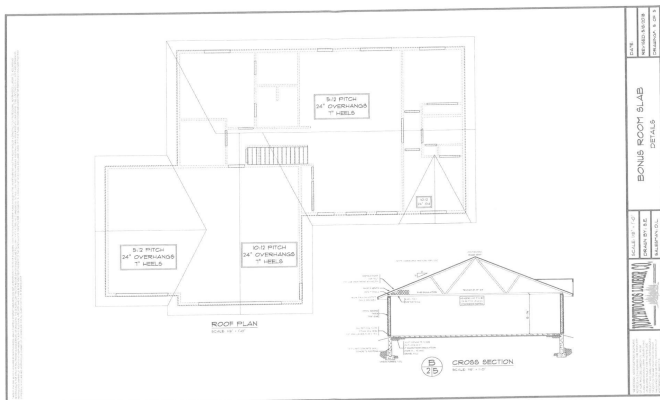
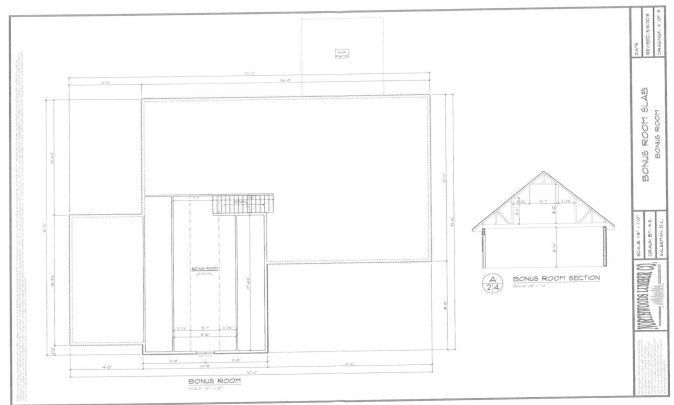
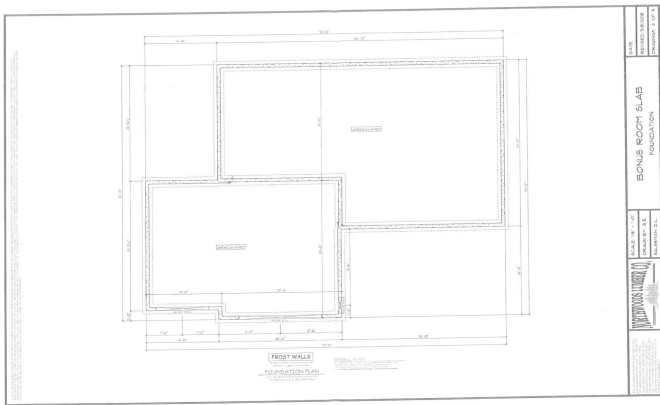
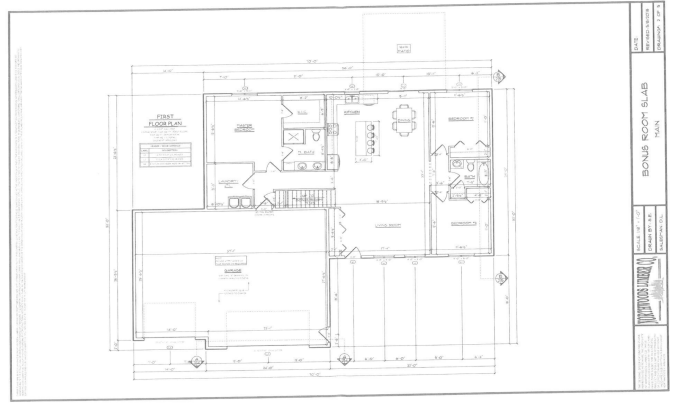
Call Affinity Real Estate

218-237-3333

info@affinityrealestate.com



Affinity Real Estate - 600 Park Avenue South - Park Rapids MN 56470



website: www.AffinityRealEstate.com | email: info@affinityrealestate.com | office: 218-237-3333 | fax: 218-237-3377



\$449,900
 MLS 6770962 Residential
 1320 Whiting Road
 Bemidji MN 56601