



MLS 6771058 Residential

\$499,900

2,530 sq ft
4 bedrooms
3 baths

1320 Whiting Road
Bemidji MN 56601

Status: Active

Description:

4-bedroom, 3 bath bi-level home in the Prairiewood subdivision. This home features a primary suite with walk-in closet, vaulted ceilings, an open floor plan, a kitchen island, and walk-in pantry, a main level and lower level full bath, a family room with gas fireplace in the lower level, natural gas heating, a deck off the dining room, a crawl space beneath the stairs, LP Smart siding, an attached finished three stall garage, and an asphalt driveway. Prairiewood features 70 acres of common wooded and open grounds that include miles of mowed walking trails, groomed cross-country ski trails, overflow parking, and a playground.

Additional Details:

Year Built	2025
Lot Acres	0.43
Lot Dimensions	108x170
Garage Stalls	3
School District	31
Taxes	\$208
Taxes with Assessments	\$208
Tax Year	2025

Additional Features:

Basement: Crawl Space, Egress Window(s), Finished, Full, Concrete **Fuel:** Natural Gas **Garage:** 3 **Heat:** Forced Air **Sewer:** Private Sewer
Water: Private **Air Conditioning:** Central Air

Driving Directions:

From Walgreens, north on Irvine Ave to a left on Whiting Rd NW. Take a left at 1320 and continue to #34 on the left.



Listed By:
Realty Experts, LLC

Affinity Real Estate Inc. participates in the Regional Multiple Listing Service of Minnesota, Inc Broker Reciprocity (sm) program, allowing us to display other broker's listings on our website. All properties are subject to prior sale, change or withdrawal.



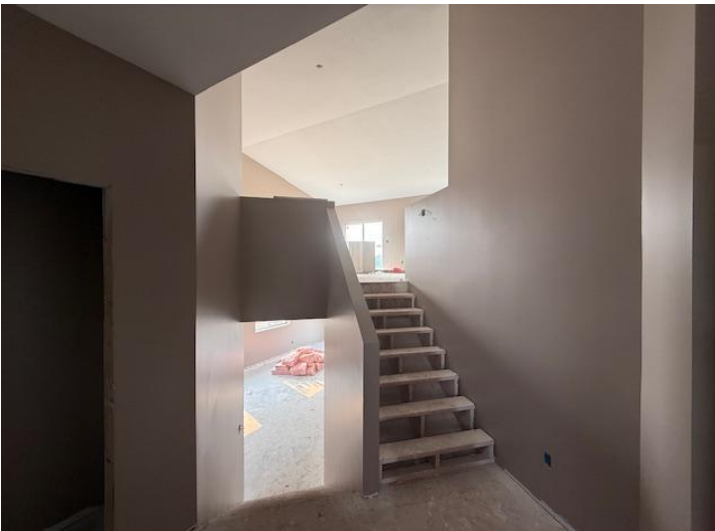
Call Affinity Real Estate

218-237-3333

info@affinityrealestate.com



Affinity Real Estate - 600 Park Avenue South - Park Rapids MN 56470



website: www.AffinityRealEstate.com | email: info@affinityrealestate.com | office: 218-237-3333 | fax: 218-237-3377

Affinity
REAL ESTATE INC

\$499,900
MLS 6771058 Residential
1320 Whiting Road
Bemidji MN 56601



website: www.AffinityRealEstate.com | email: info@affinityrealestate.com | office: 218-237-3333 | fax: 218-237-3377



\$499,900
 MLS 6771058 Residential
 1320 Whiting Road
 Bemidji MN 56601