



MLS 6771153 Lake Land

\$399,900

Description:

Hunting Land Awaits!** Discover the beauty of this expansive property, encompassing over 149 stunning acres, complete with your very own private lake for Duck Hunting.. This remarkable estate also features four versatile storage buildings—measuring 24 x 60, 24 x 52, 24 x 40, and 30 x 39—and six garage doors, perfect for all your storage needs. Immerse yourself in the lush landscape, adorned with a diverse mix of hardwoods, and take advantage of the unparalleled hunting opportunities with a property that attracts Deer, Bear, Grouse, Turkey and much more. With multiple food plots and well-established stands already in place, you'll be ready for action. Meandering trails throughout the property invite you to explore every corner of this outdoor paradise. This is not just land; it's a dream waiting to be realized. This property is part of the RIM Program. Approximately 20 Acres that encompasses all the building is excluded from the RIM program. Call for a showing today!

Additional Details:

Lot Acres	149.59
Lot Dimensions	irregular
School District	113
Taxes	\$2,685
Taxes with Assessments	\$2,906
Tax Year	2025

Additional Features:

Driving Directions:

From Park Rapids head East on 34 approximately 9.5 miles. Right on County 33 for approximately 6 miles. Left onto MN 64 N. Go about 3/4 miles and property will be on your left.



Listed By:
Wolff & Simon Real Estate

Affinity Real Estate Inc. participates in the Regional Multiple Listing Service of Minnesota, Inc Broker Reciprocity (sm) program, allowing us to display other broker's listings on our website. All properties are subject to prior sale, change or withdrawal.



Call Affinity Real Estate

218-237-3333

info@affinityrealestate.com



Affinity Real Estate - 600 Park Avenue South - Park Rapids MN 56470



website: www.AffinityRealEstate.com | email: info@affinityrealestate.com | office: 218-237-3333 | fax: 218-237-3377

Affinity
REAL ESTATE INC

\$399,900

MLS 6771153 Lake Land
20891 State 64
Akeley MN 56433



website: www.AffinityRealEstate.com | email: info@affinityrealestate.com | office: 218-237-3333 | fax: 218-237-3377



\$399,900

MLS 6771153 Lake Land
20891 State 64
Akeley MN 56433



website: www.AffinityRealEstate.com | email: info@affinityrealestate.com | office: 218-237-3333 | fax: 218-237-3377

Affinity
REAL ESTATE INC

\$399,900
MLS 6771153 Lake Land
20891 State 64
Akeley MN 56433



website: www.AffinityRealEstate.com | email: info@affinityrealestate.com | office: 218-237-3333 | fax: 218-237-3377



\$399,900

MLS 6771153 Lake Land
20891 State 64
Akeley MN 56433

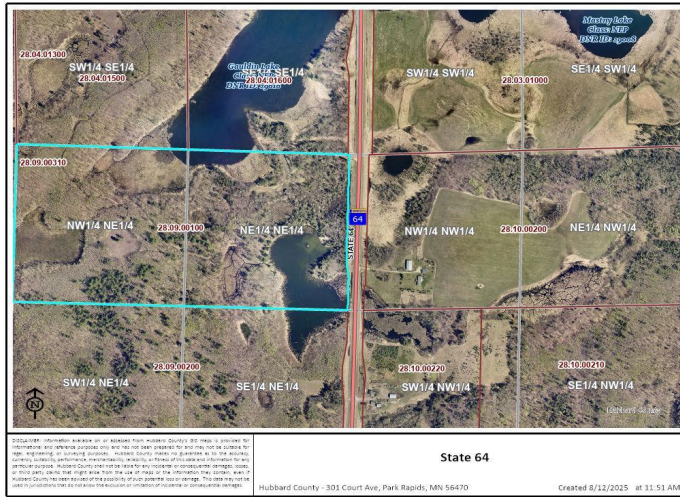


website: www.AffinityRealEstate.com | email: info@affinityrealestate.com | office: 218-237-3333 | fax: 218-237-3377



\$399,900

MLS 6771153 Lake Land
20891 State 64
Akeley MN 56433



website: www.AffinityRealEstate.com | email: info@affinityrealestate.com | office: 218-237-3333 | fax:218-237-3377



\$399,900
MLS 6771153 Lake Land
20891 State 64
Akeley MN 56433