



MLS 6771405 Land

**\$119,000**

39.5 Acres

Raw Land

070026400 321st Lane

Aitkin MN 56431

Status: Active

**Description:**

39.5 acres near Hanging Kettle Lake is a rare find, especially with a blend of privacy and proximity to downtown Aitkin. Heavily wooded terrain with abundant wildlife—ideal for nature lovers, hunters, or anyone seeking tranquility. Across the road from Hanging Kettle Lake and surrounded by many other lakes, public accesses, swimming beaches, and trails; perfect for fishing, kayaking, hiking, and snowmobiling. Looking to build your dream home or cabin, look no further!

**Additional Details:**

Lot Acres	39.5
Lot Dimensions	1160x1297x1316x1171x101x138
School District	8001
Taxes	\$458
Taxes with Assessments	\$458
Tax Year	2025

**Additional Features:**

**Driving Directions:**

From downtown Aitkin take Deer Street (County Road 12) approx. 2 miles then right on Oak Ave (County Road 39) follow approx. 1 mile then right on 321st Lane to land on right side of gravel road.



Listed By:  
Cummings Janzen Realty, Inc

Affinity Real Estate Inc. participates in the Regional Multiple Listing Service of Minnesota, Inc Broker Reciprocity (sm) program, allowing us to display other broker's listings on our website. All properties are subject to prior sale, change or withdrawal.



**Call Affinity Real Estate**

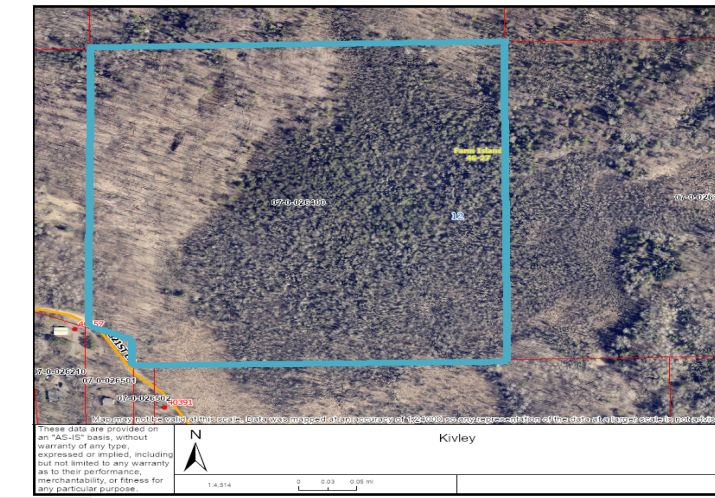
**218-237-3333**

**info@affinityrealestate.com**



**Affinity Real Estate - 600 Park Avenue South - Park Rapids MN 56470**





website: [www.AffinityRealEstate.com](http://www.AffinityRealEstate.com) | email: [info@affinityrealestate.com](mailto:info@affinityrealestate.com) | office: 218-237-3333 | fax: 218-237-3377



**\$119,000**  
 MLS 6771405 Land  
 070026400 321st Lane  
 Aitkin MN 56431





website: [www.AffinityRealEstate.com](http://www.AffinityRealEstate.com) | email: [info@affinityrealestate.com](mailto:info@affinityrealestate.com) | office: 218-237-3333 | fax:218-237-3377



**\$119,000**

MLS 6771405 Land  
070026400 321st Lane  
Aitkin MN 56431