



MLS 6771906 Lake Home

\$349,900

1,592 sq ft
3 bedrooms
1 baths

35302 County Highway 14
Richville MN 56576

Waterfront: Alice Lake (56024400)

Status: Active

Description:

Welcome to your new lakeside retreat!

This charming 3-bedroom, 1-bathroom home sits on approximately 2 acres and offers the rare opportunity to enjoy frontage on 2 exceptional lakes.

On one side, you'll find Lake Alice, a private lake with clear waters and exceptional pan fishing. With no public access, it offers a peaceful, quiet escape. Across the road, the property boasts approximately 380 feet of shoreline on Dead Lake, a nearly 8,000-acre lake renowned for incredible fishing and endless recreational possibilities.

Inside, the home features 2 main-floor bedrooms, with a 3rd bedroom and a spacious family room located in the basement. A newer hot water boiler and water heater add efficiency and peace of mind.

The attached garage doubles as a hangout space that includes a sliding glass door with beautiful views of Lake Alice, while the detached garage/shop provides ample space for storage or projects.

Whether you're looking for a serene getaway or a year-round home with unmatched lake access, this property delivers the best of both worlds. Schedule your showing today!

Additional Details:

Year Built	1959
Lot Acres	2.73
Lot Dimensions	irregular
Garage Stalls	2
School District	549
Taxes	\$1,440
Taxes with Assessments	\$1,440
Tax Year	2025

Additional Features:

Propane **Garage: 2** Heat: Baseboard, Boiler Sewer: Public Discharge Field Water: Drilled Air Conditioning: Window
Listed By: Hinkle Realty

Driving Directions: Affinity Real Estate Inc. participates in the Regional Multiple Listing Service of Minnesota, Inc. Broker Reciprocity (sm) program, allowing us to display other broker's listings on our website. All properties are subject to prior sale, change or withdrawal.



Call Affinity Real Estate

218-237-3333

info@affinityrealestate.com



Affinity Real Estate - 600 Park Avenue South - Park Rapids MN 56470



website: www.AffinityRealEstate.com | email: info@affinityrealestate.com | office: 218-237-3333 | fax: 218-237-3377



\$349,900

MLS 6771906 Lake Home
35302 County Highway 14
Richville MN 56576



website: www.AffinityRealEstate.com | email: info@affinityrealestate.com | office: 218-237-3333 | fax: 218-237-3377

Affinity
REAL ESTATE INC

\$349,900

MLS 6771906 Lake Home
35302 County Highway 14
Richville MN 56576

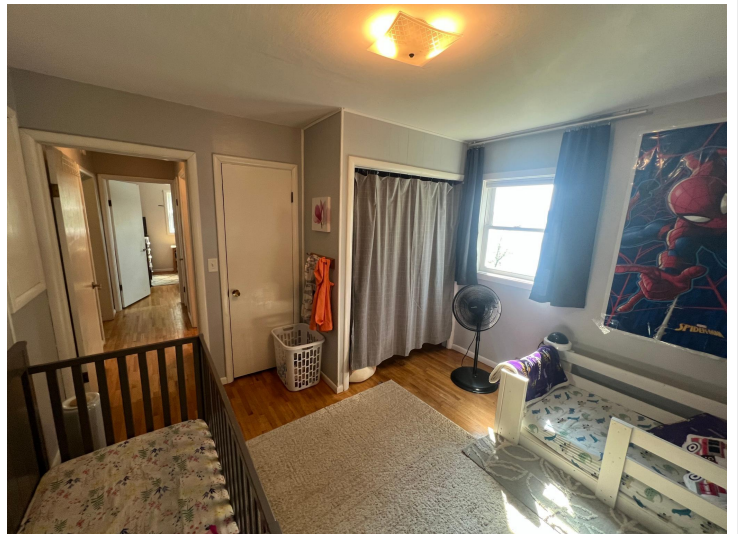


website: www.AffinityRealEstate.com | email: info@affinityrealestate.com | office: 218-237-3333 | fax: 218-237-3377

Affinity
REAL ESTATE INC

\$349,900

MLS 6771906 Lake Home
35302 County Highway 14
Richville MN 56576



website: www.AffinityRealEstate.com | email: info@affinityrealestate.com | office: 218-237-3333 | fax: 218-237-3377

Affinity
REAL ESTATE INC

\$349,900
MLS 6771906 Lake Home
35302 County Highway 14
Richville MN 56576



website: www.AffinityRealEstate.com | email: info@affinityrealestate.com | office: 218-237-3333 | fax: 218-237-3377



\$349,900
MLS 6771906 Lake Home
35302 County Highway 14
Richville MN 56576

website: www.AffinityRealEstate.com | email: info@affinityrealestate.com | office: 218-237-3333 | fax:218-237-3377



\$349,900

MLS 6771906 Lake Home
35302 County Highway 14
Richville MN 56576