

MLS 6771913 Land

**\$189,900**

60 Acres  
Raw Land

RR 185th Avenue  
Erskine MN 56535

Status: Pending

#### Description:

Great opportunity to own 60 acres of beautiful land, close to Union Lake. Take a look now before it's gone!

#### Additional Details:

Lot Acres	60
Lot Dimensions	Irreg
School District	2609
Taxes	\$434
Taxes with Assessments	\$434
Tax Year	2024

#### Additional Features:

#### Driving Directions:

Woodland Dr SE & 185th Ave SE



Listed By:  
Greenberg Realty

Affinity Real Estate Inc. participates in the Regional Multiple Listing Service of Minnesota, Inc Broker Reciprocity (sm) program, allowing us to display other broker's listings on our website. All properties are subject to prior sale, change or withdrawal.



Call Affinity Real Estate

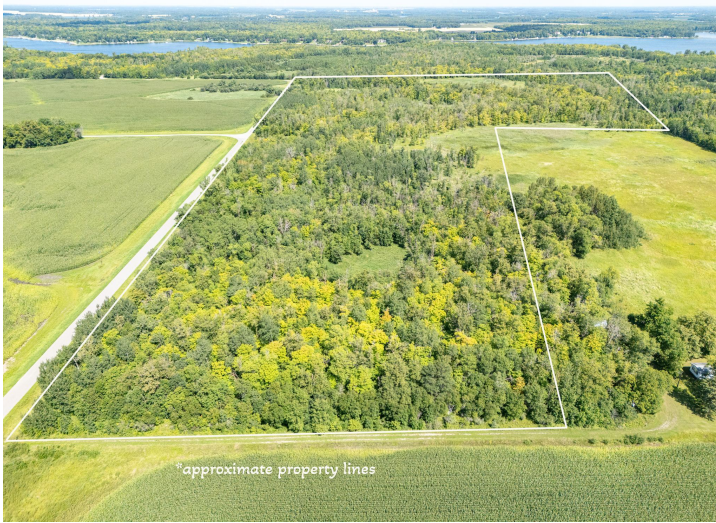
**218-237-3333**

[info@affinityrealestate.com](mailto:info@affinityrealestate.com)



Affinity Real Estate - 600 Park Avenue South - Park Rapids MN 56470





website: [www.AffinityRealEstate.com](http://www.AffinityRealEstate.com) | email: [info@affinityrealestate.com](mailto:info@affinityrealestate.com) | office: 218-237-3333 | fax: 218-237-3377



**\$189,900**  
 MLS 6771913 Land  
 RR 185th Avenue  
 Erskine MN 56535





website: [www.AffinityRealEstate.com](http://www.AffinityRealEstate.com) | email: [info@affinityrealestate.com](mailto:info@affinityrealestate.com) | office: 218-237-3333 | fax: 218-237-3377

**Affinity**  
REAL ESTATE INC

**\$189,900**  
MLS 6771913 Land  
RR 185th Avenue  
Erskine MN 56535





website: [www.AffinityRealEstate.com](http://www.AffinityRealEstate.com) | email: [info@affinityrealestate.com](mailto:info@affinityrealestate.com) | office: 218-237-3333 | fax:218-237-3377



**\$189,900**  
 MLS 6771913 Land  
 RR 185th Avenue  
 Erskine MN 56535