



MLS 6772124 Residential

\$379,900

2,200 sq ft
3 bedrooms
2 baths

8810 Tranquility Lane
Bemidji MN 56601

Status: Active

Description:

This immaculate 3 bedroom, 2 bath, 2200 sq. ft. is one to behold in Deerfield Estates neighborhood. Some of the features are an open floor plan with 2 living areas, vaulted ceilings, custom kitchen with a large center island, large primary bedroom with a full bath and a walk in closet. This home has been well cared for and it shows. A finished 3 stall attached garage, paved driveway with an RV pad with electric hookups. The outside has the feel of a park-deep green grass, trimmed trees, a 15' x 15' fire area, a 10 x 16 storage shed all this located on a all weather road is hard to beat. Your new Home awaits you.

Additional Details:

Year Built	2010
Lot Acres	2.12
Lot Dimensions	265 x 345
Garage Stalls	3
School District	31
Taxes	\$3,840
Taxes with Assessments	\$3,840
Tax Year	2025

Additional Features:

Basement: None **Fuel:** Propane **Garage:** 3 **Heat:** Forced Air **Sewer:** Private Sewer **Water:** Submersible - 4 Inch **Air Conditioning:** Central Air

Driving Directions:

Head out of Bemidji on Hwy 2 W to County Road 9--turn right for 3.5 miles to Deerfield Estates--follow signs to Home



Listed By:
Edina Realty, Inc.

Affinity Real Estate Inc. participates in the Regional Multiple Listing Service of Minnesota, Inc Broker Reciprocity (sm) program, allowing us to display other broker's listings on our website. All properties are subject to prior sale, change or withdrawal.



Call Affinity Real Estate

218-237-3333

info@affinityrealestate.com



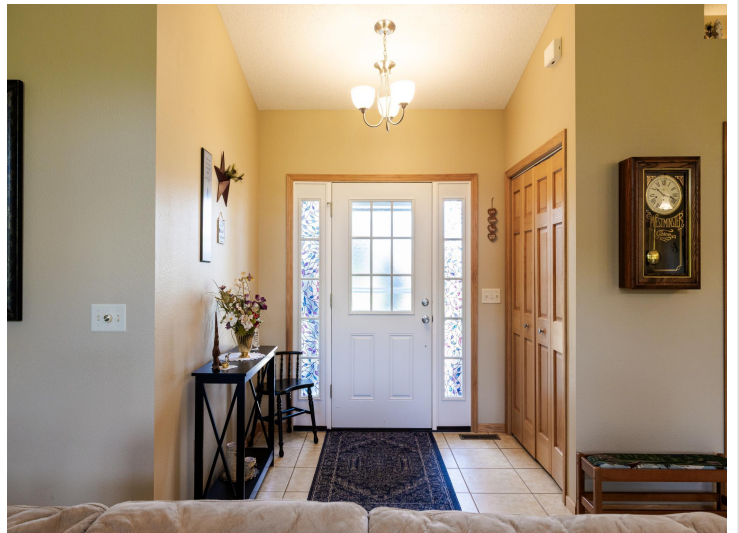
Affinity Real Estate - 600 Park Avenue South - Park Rapids MN 56470



website: www.AffinityRealEstate.com | email: info@affinityrealestate.com | office: 218-237-3333 | fax: 218-237-3377

Affinity
REAL ESTATE INC

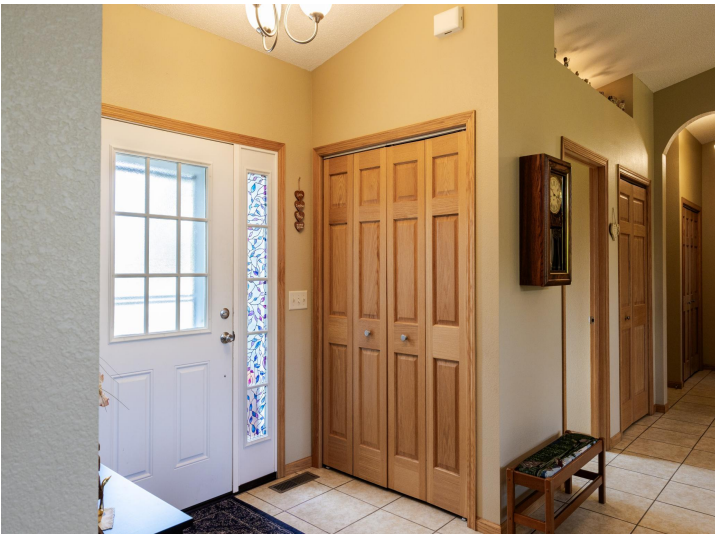
\$379,900
MLS 6772124 Residential
8810 Tranquility Lane
Bemidji MN 56601



website: www.AffinityRealEstate.com | email: info@affinityrealestate.com | office: 218-237-3333 | fax: 218-237-3377

Affinity
REAL ESTATE INC

\$379,900
MLS 6772124 Residential
8810 Tranquility Lane
Bemidji MN 56601



website: www.AffinityRealEstate.com | email: info@affinityrealestate.com | office: 218-237-3333 | fax: 218-237-3377

Affinity
REAL ESTATE INC

\$379,900
MLS 6772124 Residential
8810 Tranquility Lane
Bemidji MN 56601



website: www.AffinityRealEstate.com | email: info@affinityrealestate.com | office: 218-237-3333 | fax: 218-237-3377

Affinity
REAL ESTATE INC

\$379,900
MLS 6772124 Residential
8810 Tranquility Lane
Bemidji MN 56601



website: www.AffinityRealEstate.com | email: info@affinityrealestate.com | office: 218-237-3333 | fax: 218-237-3377

Affinity
REAL ESTATE INC

\$379,900
MLS 6772124 Residential
8810 Tranquility Lane
Bemidji MN 56601



website: www.AffinityRealEstate.com | email: info@affinityrealestate.com | office: 218-237-3333 | fax: 218-237-3377



\$379,900
 MLS 6772124 Residential
 8810 Tranquility Lane
 Bemidji MN 56601