



MLS 6772451 Lake Home

\$399,500

1,728 sq ft
3 bedrooms
2 baths

40566 Pequot Drive
Browerville MN 56438

Waterfront: Fawn

Status: Active

Description:

Lakefront Living on Fawn Lake – Turn-Key Home in Sylvan Shores. Discover 75 feet of beautiful east-facing shoreline on the serene and scenic Fawn Lake, nestled in the desirable Sylvan Shores community near Browerville. Located just 1 hour from St. Cloud and 30 minutes from Baxter, this hidden gem offers the perfect mix of peaceful seclusion and convenient access. This move-in ready, 3-bedroom, 2-bathroom home has been thoughtfully updated inside and out, offering a clean, modern, and low-maintenance living experience. The open-concept kitchen, dining, and living area boasts stunning lake views, ideal for both everyday living and entertaining. Enjoy the new appliances (included with the home), spacious bedrooms, and a comfortable layout that maximizes natural light and outdoor beauty. The mature trees surrounding the property provide privacy and a rich habitat for local wildlife, enhancing the tranquil atmosphere. As a resident of Sylvan Shores, you'll have exclusive access to a wide range of amenities, including: Swimming Pool, Tennis, Basketball & Volleyball Courts, Playground & Beach, Paddle Boats Clubhouse with Pool Table & Entertainment Areas. Whether you're looking for a full-time residence, a weekend retreat, or a lakefront investment, this property offers an unbeatable combination of nature, comfort, and community.

Don't miss this opportunity to own a slice of lakeside paradise!

Additional Details:

Year Built	1980
Lot Acres	0.36
Lot Dimensions	75x205
Garage Stalls	1
School District	2170
Taxes	\$2,380
Taxes with Assessments	\$2,434
Tax Year	2025

Additional Features:

Fuel: Electric, Propane **Heat:** Baseboard, Boiler, Heat Pump

Driving Directions:

South of Motley on Hwy 10 7.9 miles to right on County #7 4.7 miles to right on Pequot Drive to home on



Listed By:
Central MN Realty LLC

Affinity Real Estate Inc. participates in the Regional Multiple Listing Service of Minnesota, Inc Broker Reciprocity (sm) program, allowing us to display other broker's listings on our website. All properties are subject to prior sale, change or withdrawal.



Call Affinity Real Estate

218-237-3333

info@affinityrealestate.com



Affinity Real Estate - 600 Park Avenue South - Park Rapids MN 56470



website: www.AffinityRealEstate.com | email: info@affinityrealestate.com | office: 218-237-3333 | fax: 218-237-3377

Affinity
REAL ESTATE INC

\$399,500
MLS 6772451 Lake Home
40566 Pequot Drive
Browerville MN 56438



website: www.AffinityRealEstate.com | email: info@affinityrealestate.com | office: 218-237-3333 | fax: 218-237-3377

Affinity
REAL ESTATE INC

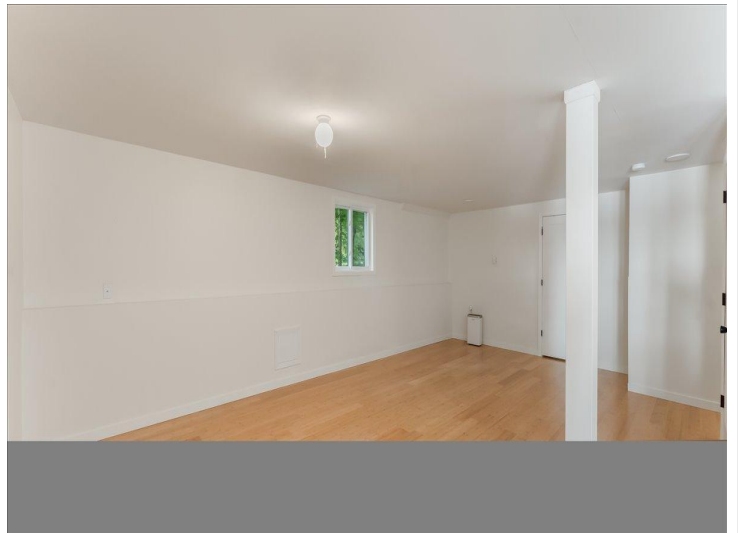
\$399,500
MLS 6772451 Lake Home
40566 Pequot Drive
Browerville MN 56438



website: www.AffinityRealEstate.com | email: info@affinityrealestate.com | office: 218-237-3333 | fax: 218-237-3377

Affinity
REAL ESTATE INC

\$399,500
MLS 6772451 Lake Home
40566 Pequot Drive
Browerville MN 56438



website: www.AffinityRealEstate.com | email: info@affinityrealestate.com | office: 218-237-3333 | fax: 218-237-3377



\$399,500
MLS 6772451 Lake Home
40566 Pequot Drive
Browerville MN 56438



website: www.AffinityRealEstate.com | email: info@affinityrealestate.com | office: 218-237-3333 | fax: 218-237-3377



\$399,500
 MLS 6772451 Lake Home
 40566 Pequot Drive
 Browerville MN 56438



website: www.AffinityRealEstate.com | email: info@affinityrealestate.com | office: 218-237-3333 | fax: 218-237-3377



\$399,500
MLS 6772451 Lake Home
40566 Pequot Drive
Browerville MN 56438