



MLS 6772881 Lake Home

\$325,000

1,568 sq ft
3 bedrooms
2 baths

2065 20th Avenue
Backus MN 56435

Waterfront: Little Portage Lake
(Ponto Lake Twp.)

Status: Active

Description:

Escape to the peaceful serenity of Little Portage Lake with this charming 3-bedroom, 2-bathroom log-sided cabin or year-round residence. Tucked away on a quiet road and nestled on nearly 2 acres, this property offers the perfect blend of privacy, comfort, and outdoor adventure. Inside, enjoy the ease of one-level living with a welcoming layout featuring a cozy freestanding pellet fireplace, spacious kitchen, and a three-season porch perfect for taking in views of the changing seasons. Step outside to a front deck overlooking beautiful Little Portage Lake — a private 40.74-acre gem ideal for peaceful paddles, fishing and quiet moments by the water. For the outdoor enthusiast, enjoy easement access to Deep Portage Reserve, offering approximately 6,500 acres of public land to explore, hunt, hike, and enjoy wildlife. Additional features include a detached 2-stall garage, storage shed, mature trees, and a natural setting that feels miles away from it all — yet just a short drive to town amenities. Whether you're seeking a cozy Up North getaway or a full-time residence with space to roam and explore, this property delivers the best of both worlds.

Additional Details:

Year Built	1997
Lot Acres	1.93
Lot Dimensions	214x464x200x402
Garage Stalls	2
School District	2174
Taxes	\$66
Taxes with Assessments	\$66
Tax Year	2025

Additional Features:

Basement: None **Fuel:** Pellet, Propane **Garage:** 2 **Heat:** Forced Air, Fireplace(s) **Sewer:** Private Sewer **Water:** Private **Air Conditioning:** None

Driving Directions:

Take 371 N out of Backus. Turn right on MN-87 E for 6.2 miles and turn left onto 20th Ave NW for about 2.5 miles. Last property on the road.



Listed By:
Realty ONE Group Choice

Affinity Real Estate Inc. participates in the Regional Multiple Listing Service of Minnesota, Inc Broker Reciprocity (sm) program, allowing us to display other broker's listings on our website. All properties are subject to prior sale, change or withdrawal.



Call Affinity Real Estate

218-237-3333

info@affinityrealestate.com



Affinity Real Estate - 600 Park Avenue South - Park Rapids MN 56470



website: www.AffinityRealEstate.com | email: info@affinityrealestate.com | office: 218-237-3333 | fax:218-237-3377

Affinity
REAL ESTATE INC

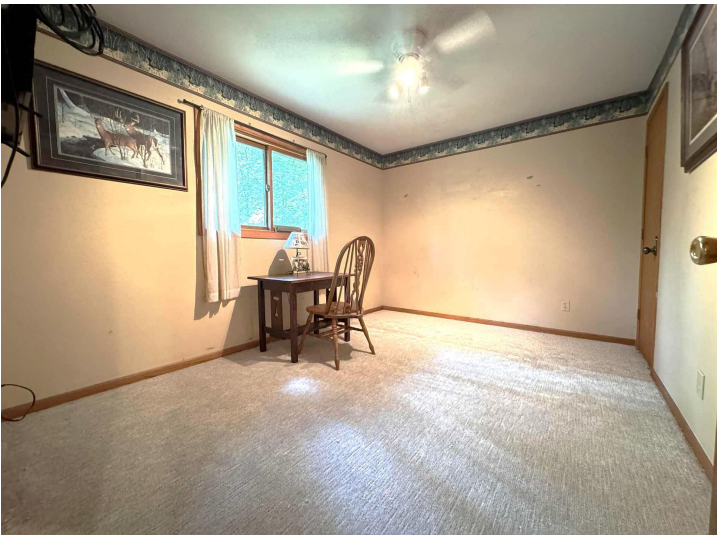
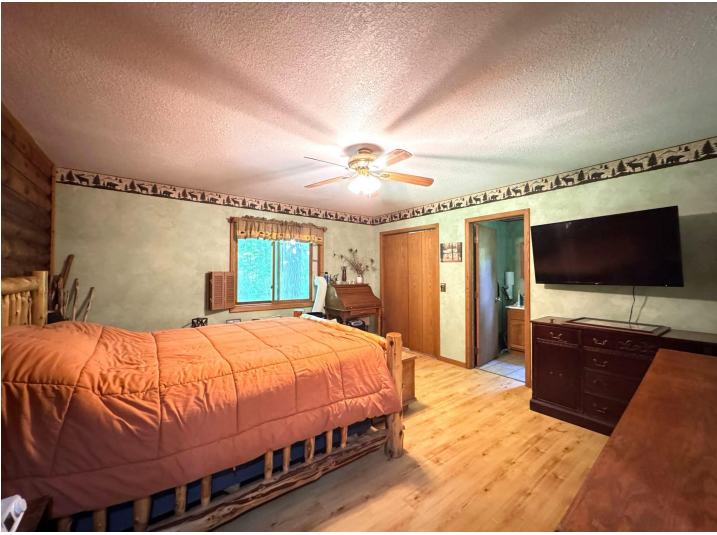
\$325,000
MLS 6772881 Lake Home
2065 20th Avenue
Backus MN 56435



website: www.AffinityRealEstate.com | email: info@affinityrealestate.com | office: 218-237-3333 | fax: 218-237-3377

Affinity
REAL ESTATE INC

\$325,000
MLS 6772881 Lake Home
2065 20th Avenue
Backus MN 56435



website: www.AffinityRealEstate.com | email: info@affinityrealestate.com | office: 218-237-3333 | fax:218-237-3377



\$325,000
MLS 6772881 Lake Home
2065 20th Avenue
Backus MN 56435