



MLS 6773050 Residential

**\$369,900**

3,264 sq ft  
3 bedrooms  
3 baths

15554 Explorer Circle  
Park Rapids MN 56470

Status: Active

**Description:**

Discover the charm of this enchanting country home in Park Rapids, featuring 3 spacious bedrooms, 3 well-appointed bathrooms, and 2 versatile bonus rooms. The property offers an attached 2-car garage and a newly renovated full basement, perfect for your creative vision. With numerous upgrades throughout, you'll appreciate the blend of modern comforts and classic appeal. Nestled in a prime location adjacent to the scenic Headwaters Golf Course and just minutes from the picturesque Heartland Trail and vibrant downtown Park Rapids, this home is a true gem waiting for you to make it your own.

**Additional Details:**

Year Built	2004
Lot Acres	0.46
Lot Dimensions	100x200
Garage Stalls	2
School District	309
Taxes	\$2,391
Taxes with Assessments	\$2,612
Tax Year	2025

**Additional Features:**

**Fuel:** Propane **Heat:** Dual

**Driving Directions:**

From Highways 71/34 in Park Rapids, go E on 34 to County Road 1 (Holiday Station) and turn left. Follow to a right on Explorer Circle, home is the first one on the left.



Listed By:  
Wolff & Simon Real Estate

Affinity Real Estate Inc. participates in the Regional Multiple Listing Service of Minnesota, Inc Broker Reciprocity (sm) program, allowing us to display other broker's listings on our website. All properties are subject to prior sale, change or withdrawal.



**Call Affinity Real Estate**

**218-237-3333**

**info@affinityrealestate.com**



**Affinity Real Estate - 600 Park Avenue South - Park Rapids MN 56470**





website: [www.AffinityRealEstate.com](http://www.AffinityRealEstate.com) | email: [info@affinityrealestate.com](mailto:info@affinityrealestate.com) | office: 218-237-3333 | fax: 218-237-3377



**\$369,900**  
 MLS 6773050 Residential  
 15554 Explorer Circle  
 Park Rapids MN 56470





website: [www.AffinityRealEstate.com](http://www.AffinityRealEstate.com) | email: [info@affinityrealestate.com](mailto:info@affinityrealestate.com) | office: 218-237-3333 | fax: 218-237-3377

**Affinity**  
REAL ESTATE INC

**\$369,900**  
MLS 6773050 Residential  
15554 Explorer Circle  
Park Rapids MN 56470





website: [www.AffinityRealEstate.com](http://www.AffinityRealEstate.com) | email: [info@affinityrealestate.com](mailto:info@affinityrealestate.com) | office: 218-237-3333 | fax: 218-237-3377

**Affinity**  
REAL ESTATE INC

**\$369,900**  
MLS 6773050 Residential  
15554 Explorer Circle  
Park Rapids MN 56470





website: [www.AffinityRealEstate.com](http://www.AffinityRealEstate.com) | email: [info@affinityrealestate.com](mailto:info@affinityrealestate.com) | office: 218-237-3333 | fax: 218-237-3377

**Affinity**  
REAL ESTATE INC

**\$369,900**  
MLS 6773050 Residential  
15554 Explorer Circle  
Park Rapids MN 56470



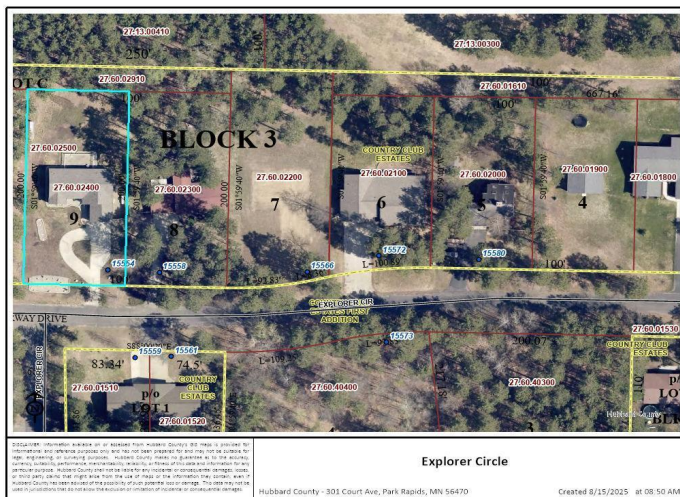


website: [www.AffinityRealEstate.com](http://www.AffinityRealEstate.com) | email: [info@affinityrealestate.com](mailto:info@affinityrealestate.com) | office: 218-237-3333 | fax: 218-237-3377

**Affinity**  
REAL ESTATE INC

**\$369,900**  
MLS 6773050 Residential  
15554 Explorer Circle  
Park Rapids MN 56470





website: [www.AffinityRealEstate.com](http://www.AffinityRealEstate.com) | email: [info@affinityrealestate.com](mailto:info@affinityrealestate.com) | office: 218-237-3333 | fax: 218-237-3377

**Affinity**  
REAL ESTATE INC

**\$369,900**  
MLS 6773050 Residential  
15554 Explorer Circle  
Park Rapids MN 56470