



MLS 6773081 Residential

**\$359,000**

2,680 sq ft  
5 bedrooms  
2 baths

1214 Darling Drive  
Alexandria MN 56308

Status: Active

**Description:**

Check out this Charming 5-Bed, 2-Bath Home in one of Alexandria's most sought after Neighborhoods. This spacious and beautifully maintained home is perfectly located just a block from Tabbert's Park. Step inside to discover a home that flows effortlessly, featuring three bedrooms conveniently located on the main level. The open layout is perfect for both everyday living and entertaining, with generously sized family spaces that offer comfort and flexibility. Step out the back patio door to enjoy the fully fenced in backyard with an awesome new patio area. Enjoy peace of mind with major updates already taken care of, including a new roof, new furnace, new water treatment systems and a new well. The fully fenced-in backyard provides a private oasis for kids, pets, and family gatherings. Don't miss this opportunity to own a move-in ready home in a desirable location with room to grow!

**Additional Details:**

|                        |           |
|------------------------|-----------|
| Year Built             | 1971      |
| Lot Acres              | 0.49      |
| Lot Dimensions         | 120 x 175 |
| Garage Stalls          | 2         |
| School District        | 206       |
| Taxes                  | \$2,480   |
| Taxes with Assessments | \$2,480   |
| Tax Year               | 2025      |

**Additional Features:**

**Fuel:** Natural Gas, Wood **Heat:** Forced Air

**Driving Directions:**

Go north from the Douglas Co Fairgrounds on Co Rd 22. Take a right on South Darling drive. House will be on the right about 1/4 mile on South Darling. See sign.



Listed By:  
Central MN Realty LLC

Affinity Real Estate Inc. participates in the Regional Multiple Listing Service of Minnesota, Inc Broker Reciprocity (sm) program, allowing us to display other broker's listings on our website. All properties are subject to prior sale, change or withdrawal.



**Call Affinity Real Estate**

**218-237-3333**

**info@affinityrealestate.com**



**Affinity Real Estate - 600 Park Avenue South - Park Rapids MN 56470**





website: [www.AffinityRealEstate.com](http://www.AffinityRealEstate.com) | email: [info@affinityrealestate.com](mailto:info@affinityrealestate.com) | office: 218-237-3333 | fax: 218-237-3377



**\$359,000**  
 MLS 6773081 Residential  
 1214 Darling Drive  
 Alexandria MN 56308





website: [www.AffinityRealEstate.com](http://www.AffinityRealEstate.com) | email: [info@affinityrealestate.com](mailto:info@affinityrealestate.com) | office: 218-237-3333 | fax: 218-237-3377

**Affinity**  
REAL ESTATE INC

**\$359,000**  
MLS 6773081 Residential  
1214 Darling Drive  
Alexandria MN 56308





website: [www.AffinityRealEstate.com](http://www.AffinityRealEstate.com) | email: [info@affinityrealestate.com](mailto:info@affinityrealestate.com) | office: 218-237-3333 | fax: 218-237-3377

**Affinity**  
REAL ESTATE INC

**\$359,000**  
MLS 6773081 Residential  
1214 Darling Drive  
Alexandria MN 56308





website: [www.AffinityRealEstate.com](http://www.AffinityRealEstate.com) | email: [info@affinityrealestate.com](mailto:info@affinityrealestate.com) | office: 218-237-3333 | fax: 218-237-3377

**Affinity**  
REAL ESTATE INC

**\$359,000**

MLS 6773081 Residential  
1214 Darling Drive  
Alexandria MN 56308





website: [www.AffinityRealEstate.com](http://www.AffinityRealEstate.com) | email: [info@affinityrealestate.com](mailto:info@affinityrealestate.com) | office: 218-237-3333 | fax: 218-237-3377

**Affinity**  
REAL ESTATE INC

**\$359,000**  
MLS 6773081 Residential  
1214 Darling Drive  
Alexandria MN 56308



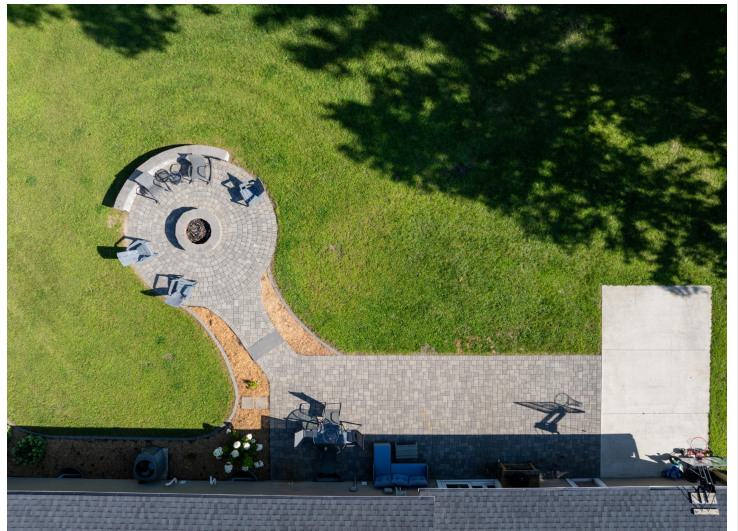


website: [www.AffinityRealEstate.com](http://www.AffinityRealEstate.com) | email: [info@affinityrealestate.com](mailto:info@affinityrealestate.com) | office: 218-237-3333 | fax: 218-237-3377

**Affinity**  
REAL ESTATE INC

**\$359,000**  
MLS 6773081 Residential  
1214 Darling Drive  
Alexandria MN 56308





website: [www.AffinityRealEstate.com](http://www.AffinityRealEstate.com) | email: [info@affinityrealestate.com](mailto:info@affinityrealestate.com) | office: 218-237-3333 | fax: 218-237-3377



**\$359,000**  
 MLS 6773081 Residential  
 1214 Darling Drive  
 Alexandria MN 56308





website: [www.AffinityRealEstate.com](http://www.AffinityRealEstate.com) | email: [info@affinityrealestate.com](mailto:info@affinityrealestate.com) | office: 218-237-3333 | fax: 218-237-3377



**\$359,000**  
 MLS 6773081 Residential  
 1214 Darling Drive  
 Alexandria MN 56308





website: [www.AffinityRealEstate.com](http://www.AffinityRealEstate.com) | email: [info@affinityrealestate.com](mailto:info@affinityrealestate.com) | office: 218-237-3333 | fax: 218-237-3377

**Affinity**  
REAL ESTATE INC

**\$359,000**  
MLS 6773081 Residential  
1214 Darling Drive  
Alexandria MN 56308





website: [www.AffinityRealEstate.com](http://www.AffinityRealEstate.com) | email: [info@affinityrealestate.com](mailto:info@affinityrealestate.com) | office: 218-237-3333 | fax: 218-237-3377

**Affinity**  
REAL ESTATE INC

**\$359,000**  
MLS 6773081 Residential  
1214 Darling Drive  
Alexandria MN 56308





website: [www.AffinityRealEstate.com](http://www.AffinityRealEstate.com) | email: [info@affinityrealestate.com](mailto:info@affinityrealestate.com) | office: 218-237-3333 | fax:218-237-3377



**\$359,000**  
MLS 6773081 Residential  
1214 Darling Drive  
Alexandria MN 56308