



MLS 6773356 Commercial

**\$80,000**

11941 147th Street  
Lake Park MN 56554

Status: Active

**Description:**

Be ready for fall with your new 30 X 40 foot storage building with: 12' tall 2X6 walls; 16'W X 12'T Insulated Overhead Door With Opener; 3' Service Door; Concrete Floor with Floor Drain; and Concrete Driveway. Located on Becker #1, just 2 miles north of Becker #4, next to the Cormorant Township Recycling Center you have easy access to the Cormorant Lakes area on paved roads. Choose from completed 30 X 40 or 40 X 60 buildings or allow us to customize a building for you with several options: In Floor Or Forced Air Heat, Well, Holding Tank, or Bathroom. Add a second overhead door in the back wall for improved access and ventilation. Create the ideal environment to suit your needs. Owner/Agent.

**Additional Details:**

Year Built	2025
Lot Acres	0.03
Lot Dimensions	30 x 40
Garage Stalls	6
School District	2889
Taxes	\$4
Taxes with Assessments	\$4
Tax Year	2025

**Additional Features:**

**Fuel:** Other **Garage:** 6 **Heat:** None **Sewer:** None **Water:** None

**Driving Directions:**

From Becker #4 and #1: North 2 miles on Becker #1 to property. Next to the Cormorant Township Yard Recycling Center.



Listed By:  
Cormorant Realty

Affinity Real Estate Inc. participates in the Regional Multiple Listing Service of Minnesota, Inc Broker Reciprocity (sm) program, allowing us to display other broker's listings on our website. All properties are subject to prior sale, change or withdrawal.



**Call Affinity Real Estate**

**218-237-3333**

**info@affinityrealestate.com**



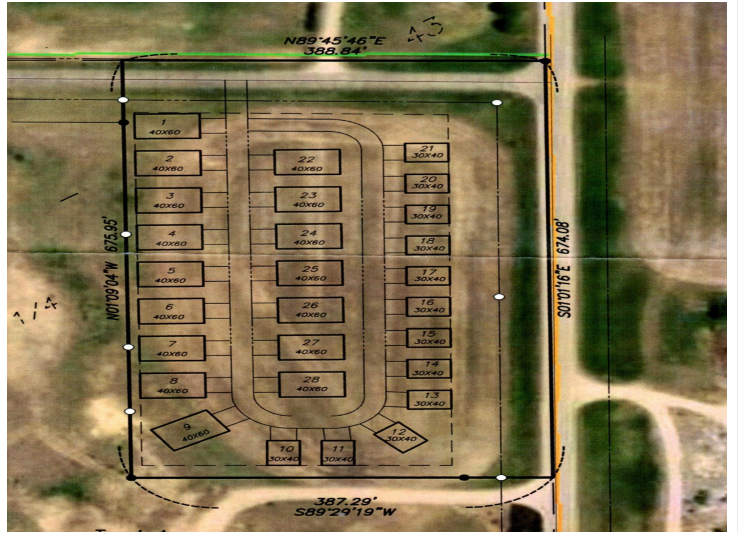
**Affinity Real Estate - 600 Park Avenue South - Park Rapids MN 56470**



website: [www.AffinityRealEstate.com](http://www.AffinityRealEstate.com) | email: [info@affinityrealestate.com](mailto:info@affinityrealestate.com) | office: 218-237-3333 | fax: 218-237-3377



**\$80,000**  
 MLS 6773356 Commercial  
 11941 147th Street  
 Lake Park MN 56554



website: [www.AffinityRealEstate.com](http://www.AffinityRealEstate.com) | email: [info@affinityrealestate.com](mailto:info@affinityrealestate.com) | office: 218-237-3333 | fax: 218-237-3377



**\$80,000**  
 MLS 6773356 Commercial  
 11941 147th Street  
 Lake Park MN 56554



website: [www.AffinityRealEstate.com](http://www.AffinityRealEstate.com) | email: [info@affinityrealestate.com](mailto:info@affinityrealestate.com) | office: 218-237-3333 | fax: 218-237-3377



**\$80,000**  
MLS 6773356 Commercial  
11941 147th Street  
Lake Park MN 56554