



MLS 6773647 Lake Land

**\$1,075,000**

**Description:**

LOCATION, LOCATION, LOCATION! Create your very own dream home on the South Shore of Big Detroit. Property has been recently cleared of previous home offering a blank canvas on level lot with 110 ft of shoreline with hard bottom in PRIME location. Directly across the street sits Detroit Lakes' newest park featuring state of the art pickleball and tennis courts as well as a wonderful playground area and shelter available for your next event. Big Detroit is the epitome of "Lake Life" offering over 3,000 acres of boating, swimming, fishing and water sports. Why leave the water when you can access multiple restaurants, the city park and our famous public beach right from your favorite water vessel? Discover why thousands of people choose Big Detroit and Detroit Lakes as their summer destination with this rare opportunity to build your perfect dream home in this little slice of paradise.

**Additional Details:**

Lot Acres	0.64
Lot Dimensions	108 x 272 x 110 x 254
School District	22
Taxes	\$8,674
Taxes with Assessments	\$8,674
Tax Year	2025

**Additional Features:**

**Driving Directions:**

From Detroit Lakes: Take West Lake Dr to Long Bridge Rd. Head East on Long Bridge Rd. Long Bridge Rd turns into S. Shore Dr. Property is East of South Shore public access and across from South Shore Park.



Listed By:  
HomeSmart Adventure Realty

Affinity Real Estate Inc. participates in the Regional Multiple Listing Service of Minnesota, Inc Broker Reciprocity (sm) program, allowing us to display other broker's listings on our website. All properties are subject to prior sale, change or withdrawal.



**Call Affinity Real Estate**

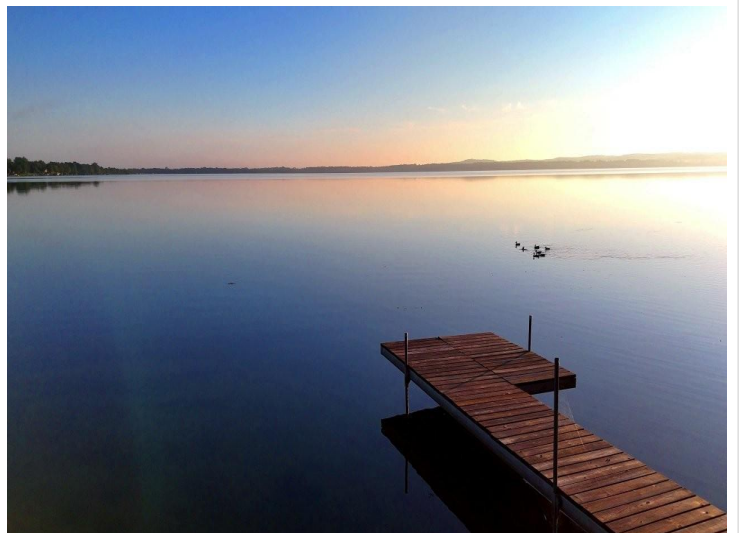
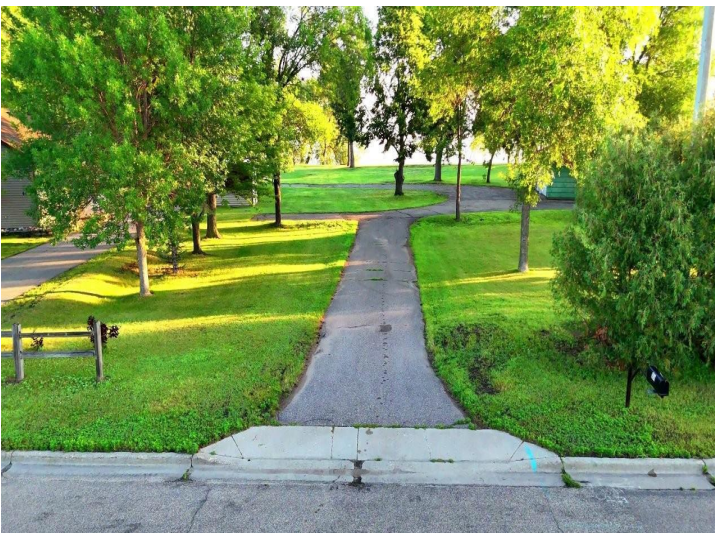
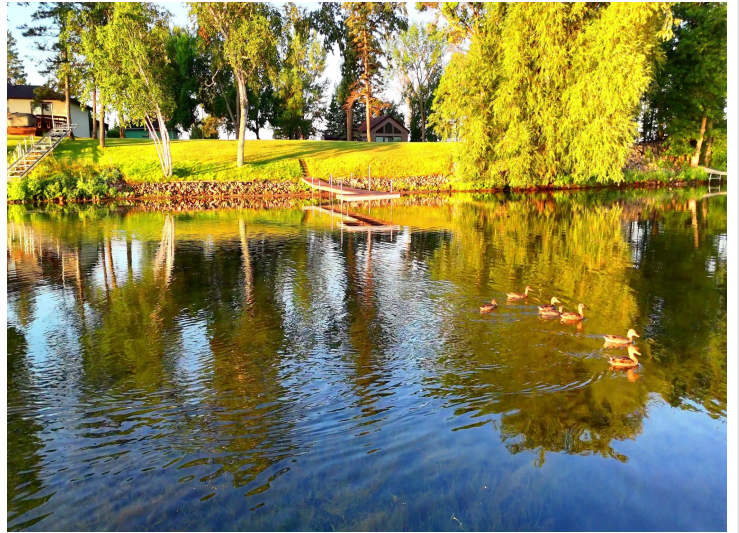
**218-237-3333**

**info@affinityrealestate.com**



**Affinity Real Estate - 600 Park Avenue South - Park Rapids MN 56470**



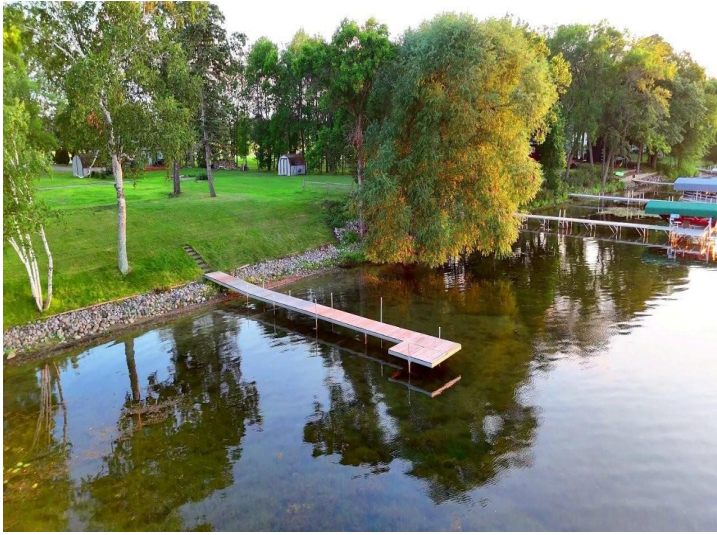


website: [www.AffinityRealEstate.com](http://www.AffinityRealEstate.com) | email: [info@affinityrealestate.com](mailto:info@affinityrealestate.com) | office: 218-237-3333 | fax: 218-237-3377



**\$1,075,000**  
 MLS 6773647 Lake Land  
 604 Shore Drive  
 Detroit Lakes MN 56501





website: [www.AffinityRealEstate.com](http://www.AffinityRealEstate.com) | email: [info@affinityrealestate.com](mailto:info@affinityrealestate.com) | office: 218-237-3333 | fax: 218-237-3377

**Affinity**  
REAL ESTATE INC

**\$1,075,000**  
MLS 6773647 Lake Land  
604 Shore Drive  
Detroit Lakes MN 56501