

MLS 6773870 Lake Land

\$239,900

Description:

THIS IS IT! I have seen a lot of land throughout my 35 year career and this is one of the nicest river parcels I have ever seen! 15+ Acres and 1500 Feet of Crow Wing River Frontage. This property has it all. Owner even planted a Honeycrisp Apple Orchard that is fully mature and offers amazing produce. Deer tracks throughout like a super highway for the fall hunt. Great views and entry points to the river. This is a groomed lot ready for hunting, recreation, and enjoyment. Jayco RV with 2 pushouts included! Deck is attached open to the groomed yard complete with fire pit and gazebo. Another Winnebago RV is included as well as an additional "Hunting Lodge". Trumpeter Swans come every year creating a beautiful spectacle on the river. Remember, this is a fantastic walleye river for all you fishing enthusiasts. Eagles nest across the river so you can watch them fish. End of the road entry makes this one of the most private pieces of land on the river. This is a very rare, large piece of property on one of the most peaceful rivers in Minnesota.

Additional Details:

Lot Acres	15.81
Lot Dimensions	1519x1325x554x1353x316
School District	2170
Taxes	\$1,256
Taxes with Assessments	\$1,256
Tax Year	2025

Additional Features:

Driving Directions:

From Staples, MN at Highway 10: Go north on 4th Street NE. Follow 0.9 mi to Warner Road NE, turn left. Follow 0.3 mi to Airport, turn right. Follow 1.5 mi to Co Rd2/Co Rd 30, turn right. Follow 3.1 mi to 140th St/Thsp Rd, turn left. Follow 0.8 mi to 273rd Avenue and turn right. Follow 1.0 mi



Listed By:
Premium Properties Realty

Affinity Real Estate Inc. participates in the Regional Multiple Listing Service of Minnesota, Inc Broker Reciprocity (sm) program, allowing us to display other broker's listings on our website. All properties are subject to prior sale, change or withdrawal.



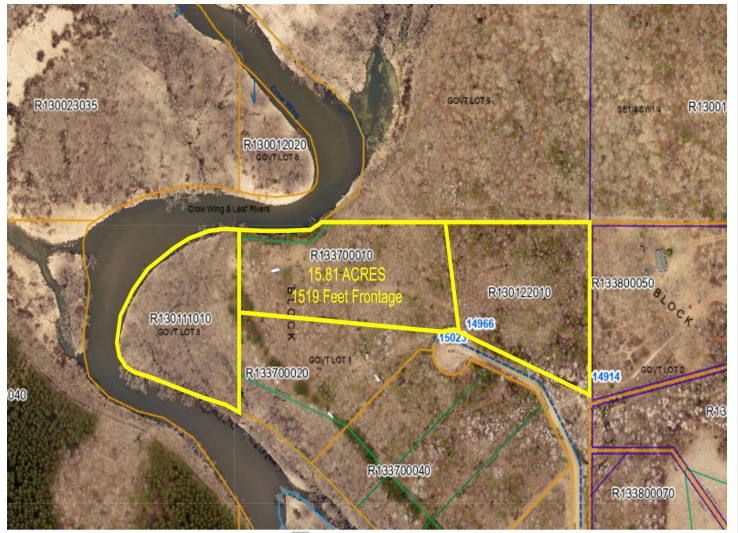
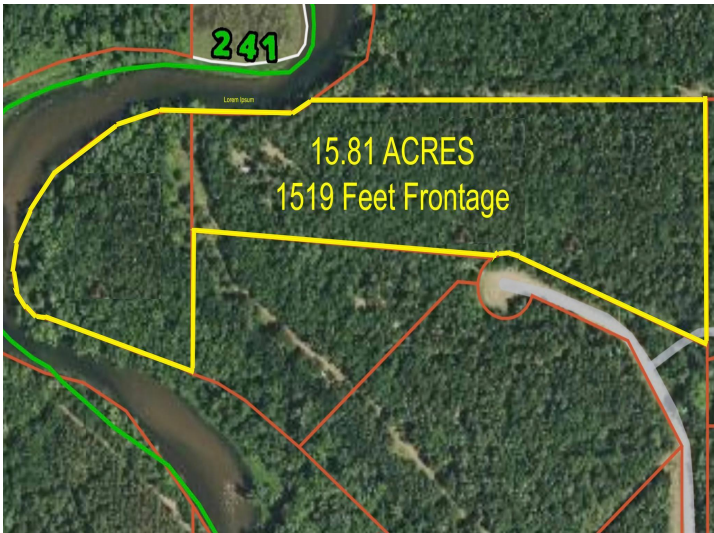
Call Affinity Real Estate

218-237-3333

info@affinityrealestate.com



Affinity Real Estate - 600 Park Avenue South - Park Rapids MN 56470



website: www.AffinityRealEstate.com | email: info@affinityrealestate.com | office: 218-237-3333 | fax: 218-237-3377



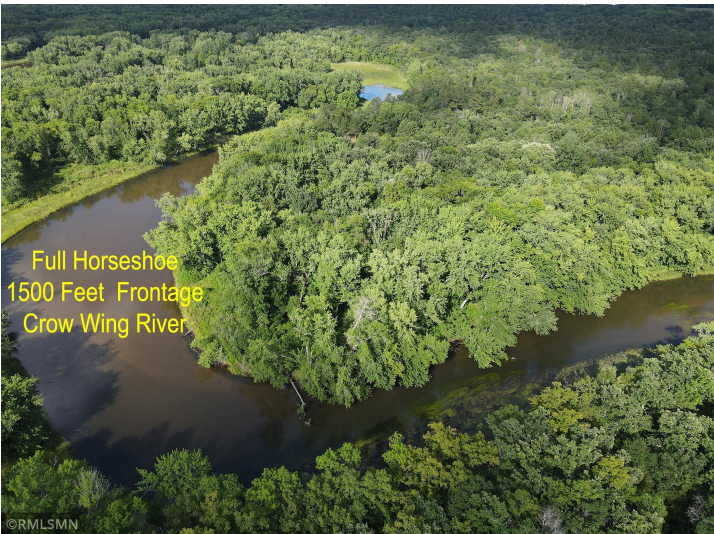
\$239,900
 MLS 6773870 Lake Land
 14966 273rd Avenue
 Staples MN 56479



website: www.AffinityRealEstate.com | email: info@affinityrealestate.com | office: 218-237-3333 | fax: 218-237-3377



\$239,900
 MLS 6773870 Lake Land
 14966 273rd Avenue
 Staples MN 56479



website: www.AffinityRealEstate.com | email: info@affinityrealestate.com | office: 218-237-3333 | fax: 218-237-3377



\$239,900
MLS 6773870 Lake Land
14966 273rd Avenue
Staples MN 56479



website: www.AffinityRealEstate.com | email: info@affinityrealestate.com | office: 218-237-3333 | fax: 218-237-3377



\$239,900
MLS 6773870 Lake Land
14966 273rd Avenue
Staples MN 56479



website: www.AffinityRealEstate.com | email: info@affinityrealestate.com | office: 218-237-3333 | fax: 218-237-3377



\$239,900
 MLS 6773870 Lake Land
 14966 273rd Avenue
 Staples MN 56479



website: www.AffinityRealEstate.com | email: info@affinityrealestate.com | office: 218-237-3333 | fax: 218-237-3377



\$239,900
 MLS 6773870 Lake Land
 14966 273rd Avenue
 Staples MN 56479



website: www.AffinityRealEstate.com | email: info@affinityrealestate.com | office: 218-237-3333 | fax: 218-237-3377



\$239,900
 MLS 6773870 Lake Land
 14966 273rd Avenue
 Staples MN 56479



website: www.AffinityRealEstate.com | email: info@affinityrealestate.com | office: 218-237-3333 | fax: 218-237-3377

Affinity
REAL ESTATE INC

\$239,900
MLS 6773870 Lake Land
14966 273rd Avenue
Staples MN 56479



website: www.AffinityRealEstate.com | email: info@affinityrealestate.com | office: 218-237-3333 | fax: 218-237-3377

Affinity
REAL ESTATE INC

\$239,900
MLS 6773870 Lake Land
14966 273rd Avenue
Staples MN 56479



website: www.AffinityRealEstate.com | email: info@affinityrealestate.com | office: 218-237-3333 | fax: 218-237-3377



\$239,900
MLS 6773870 Lake Land
14966 273rd Avenue
Staples MN 56479